

žena 92 let



Anamnéza

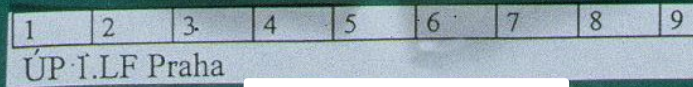
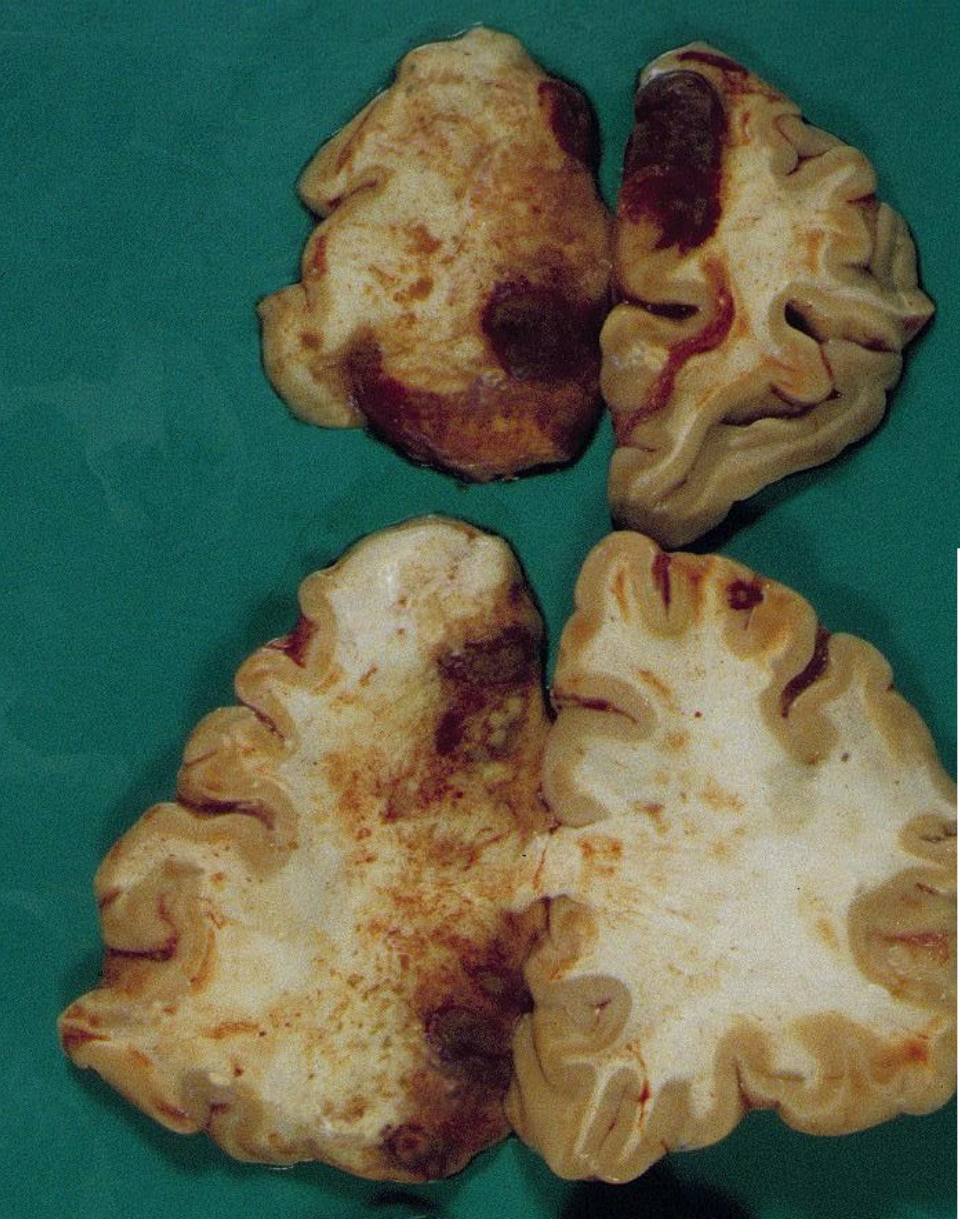
- ◆ nalezena doma v bezvědomí
- ◆ na CT atypická expanzivní frontální léze
nejspíše metastáza
- ◆ sonografie – pankreatická léze – nádor ?
- ◆ zemřela za měsíc po prolongovaném
komatu





1 2 3 4 5 6 7 8 9 10
ÚP · I.LF Praha cm

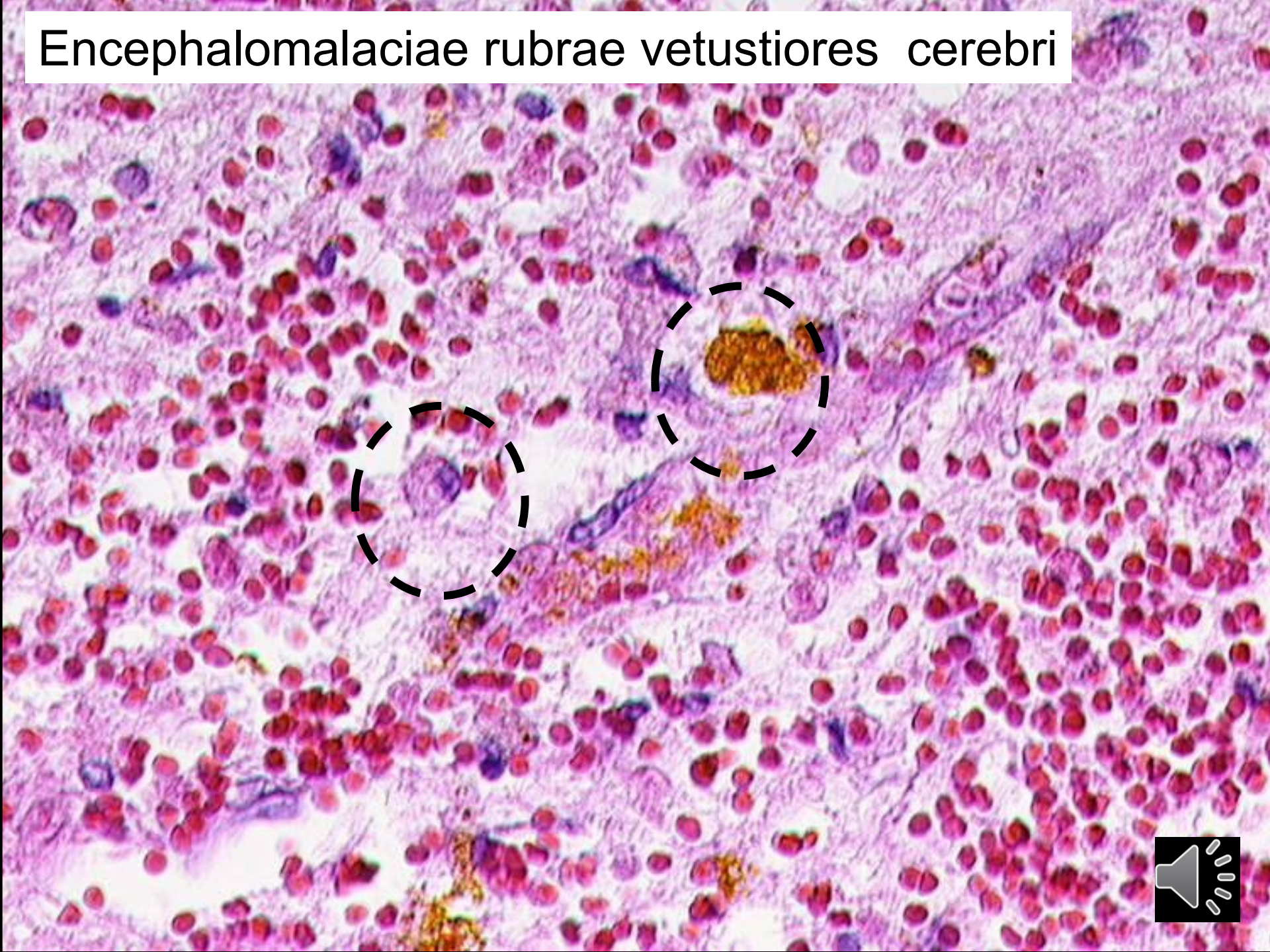


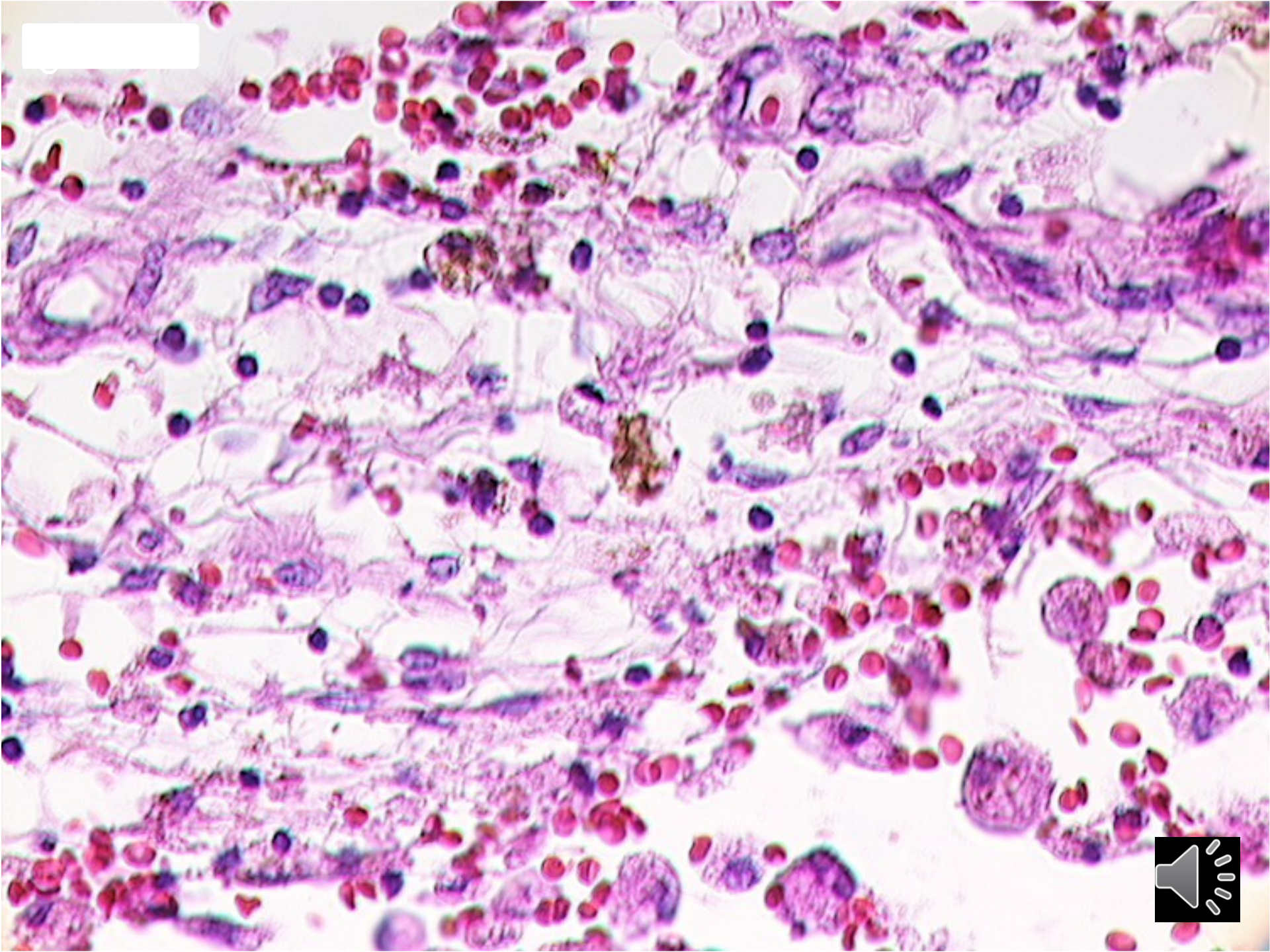


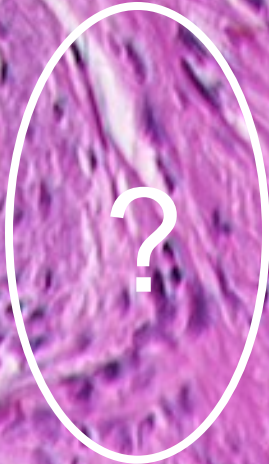
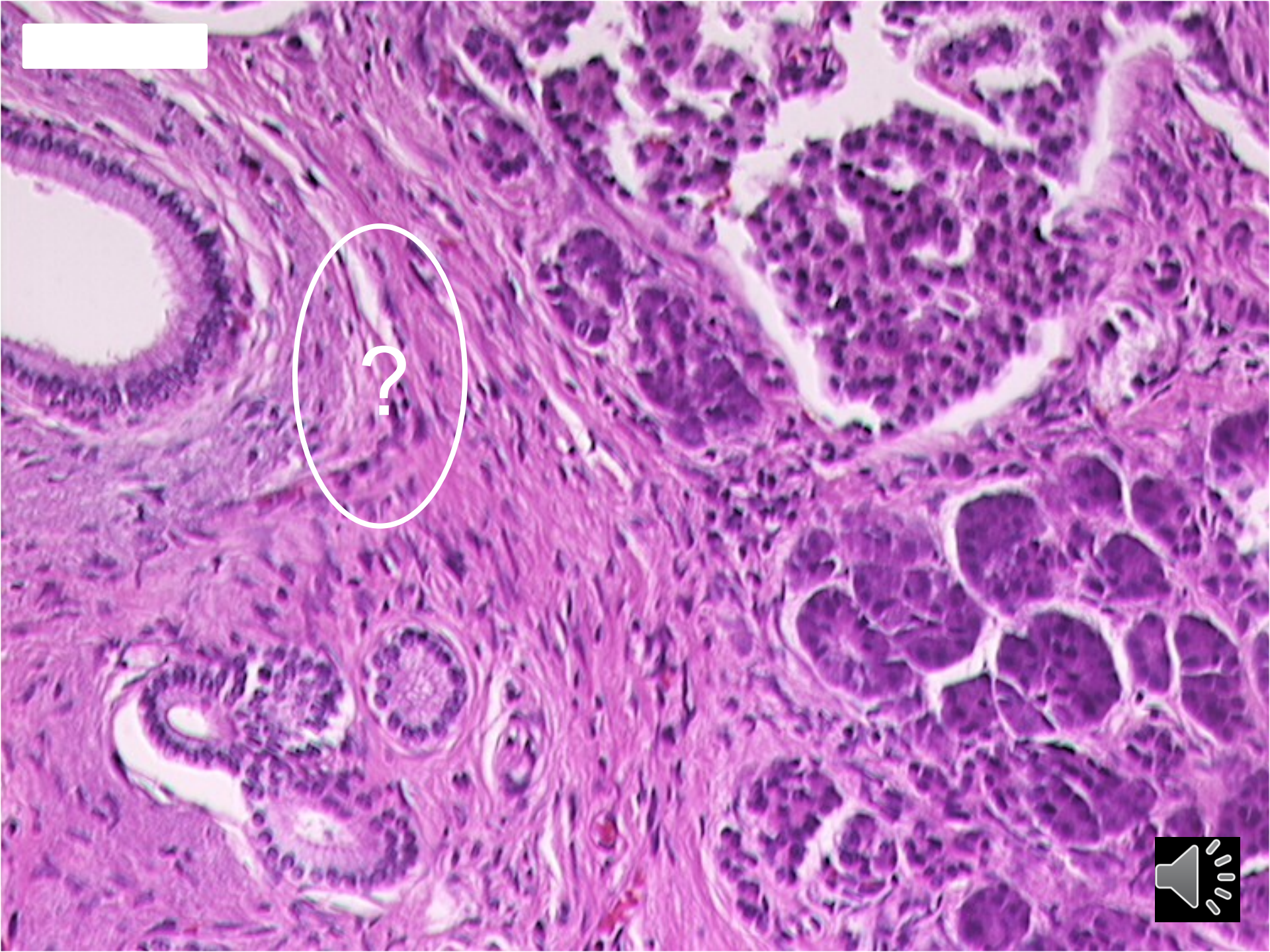
ÚP I.LF Praha

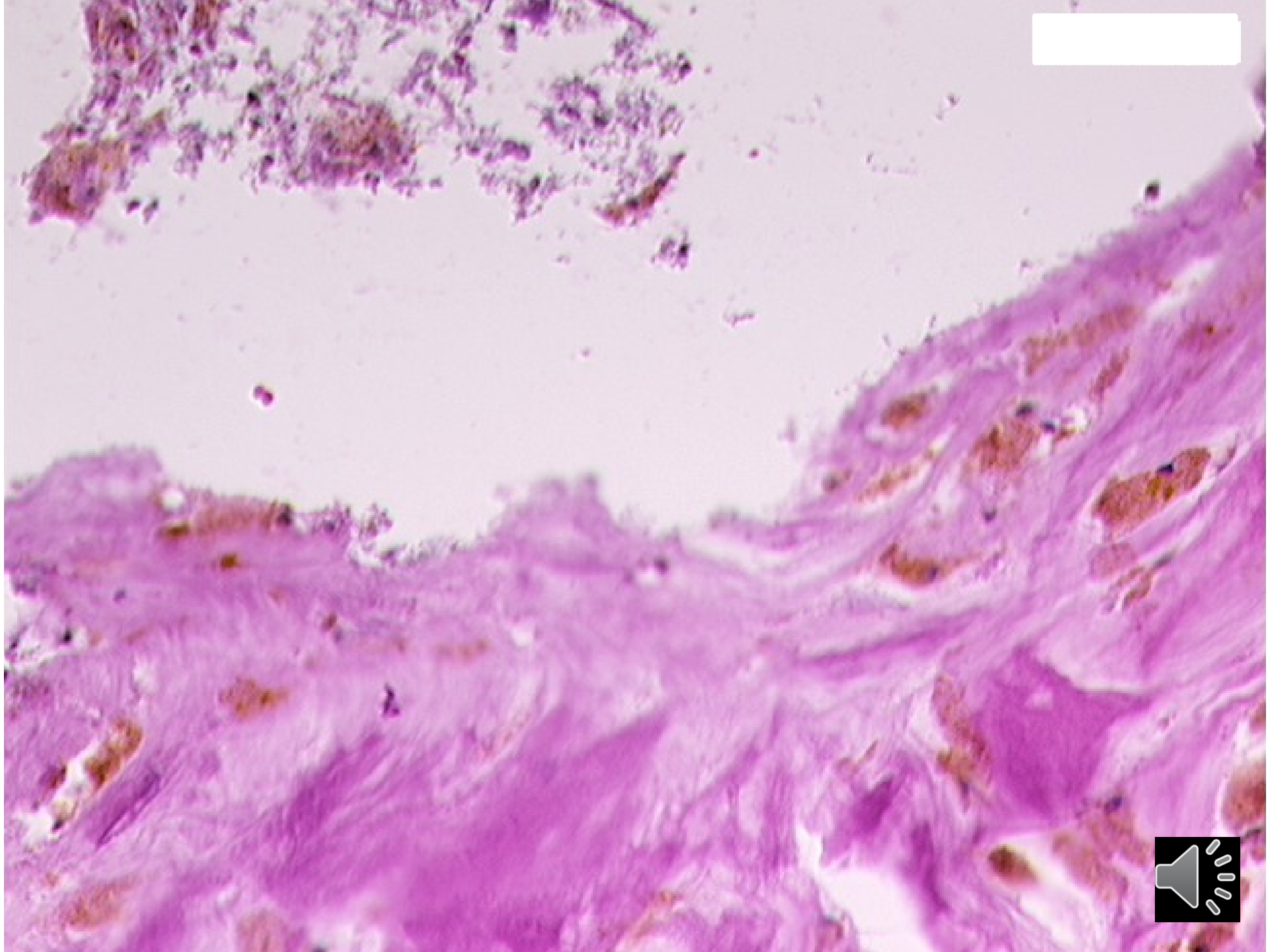


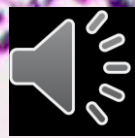
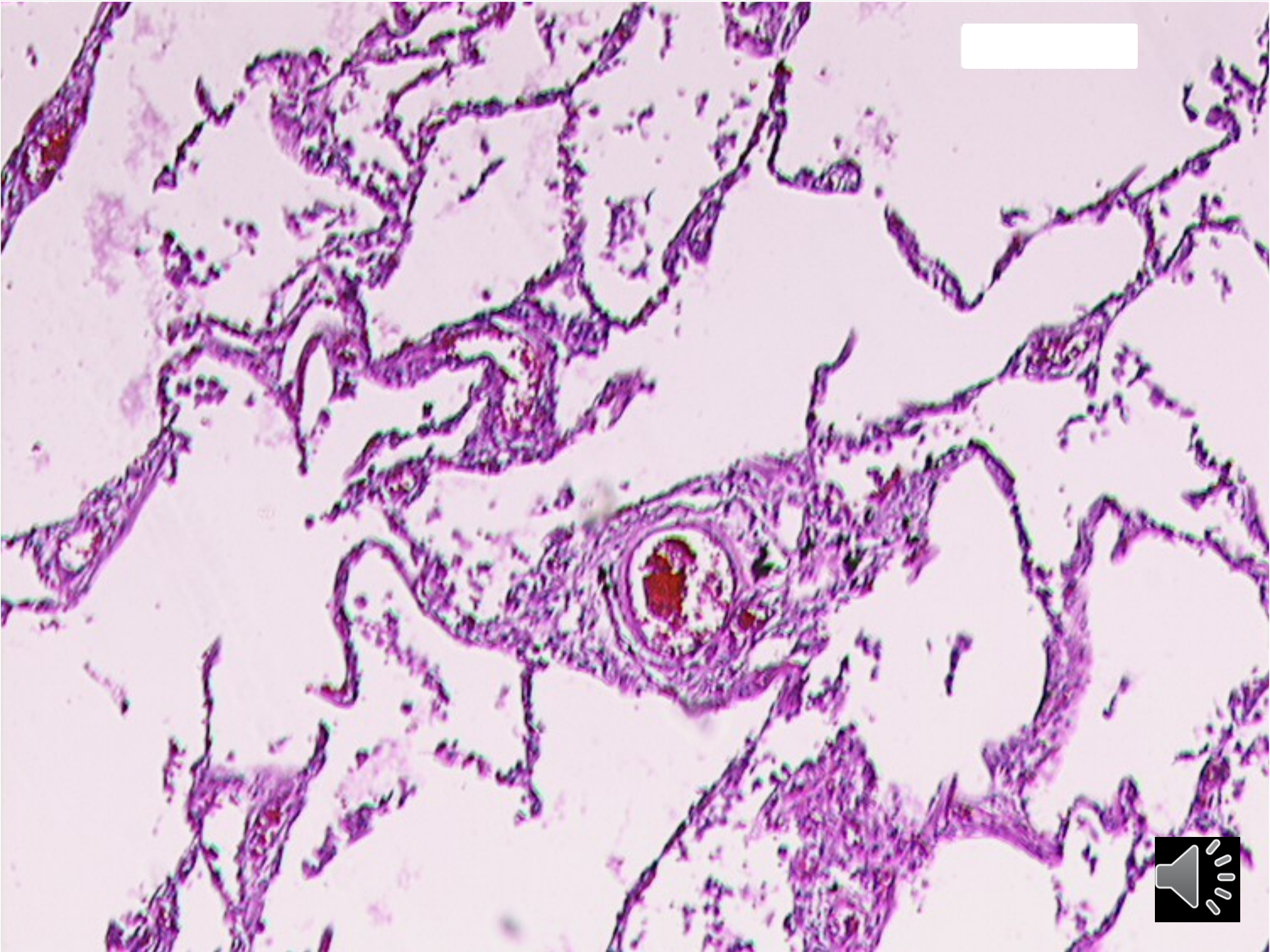
Encephalomalaciae rubrae vetustiores cerebri

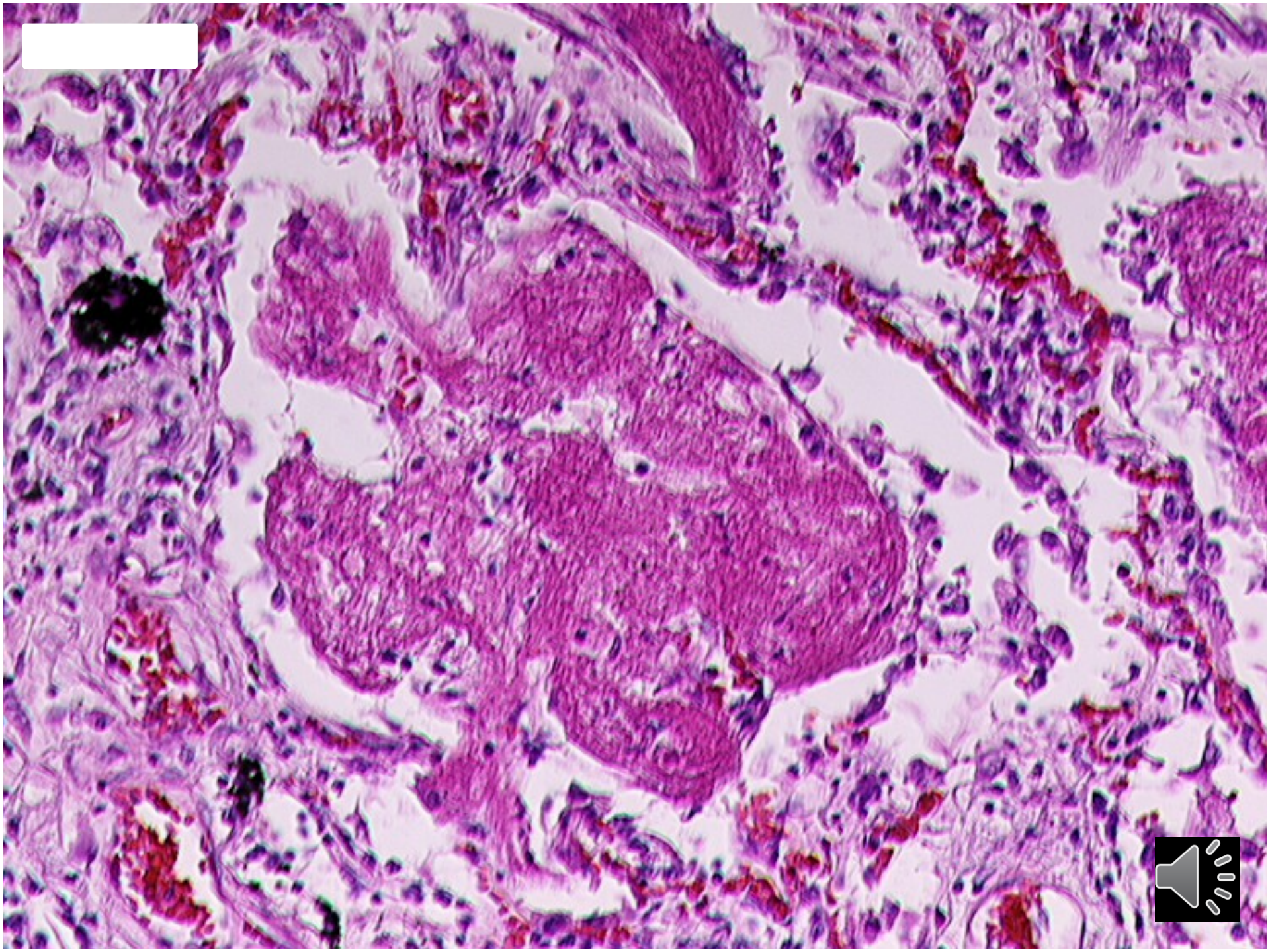


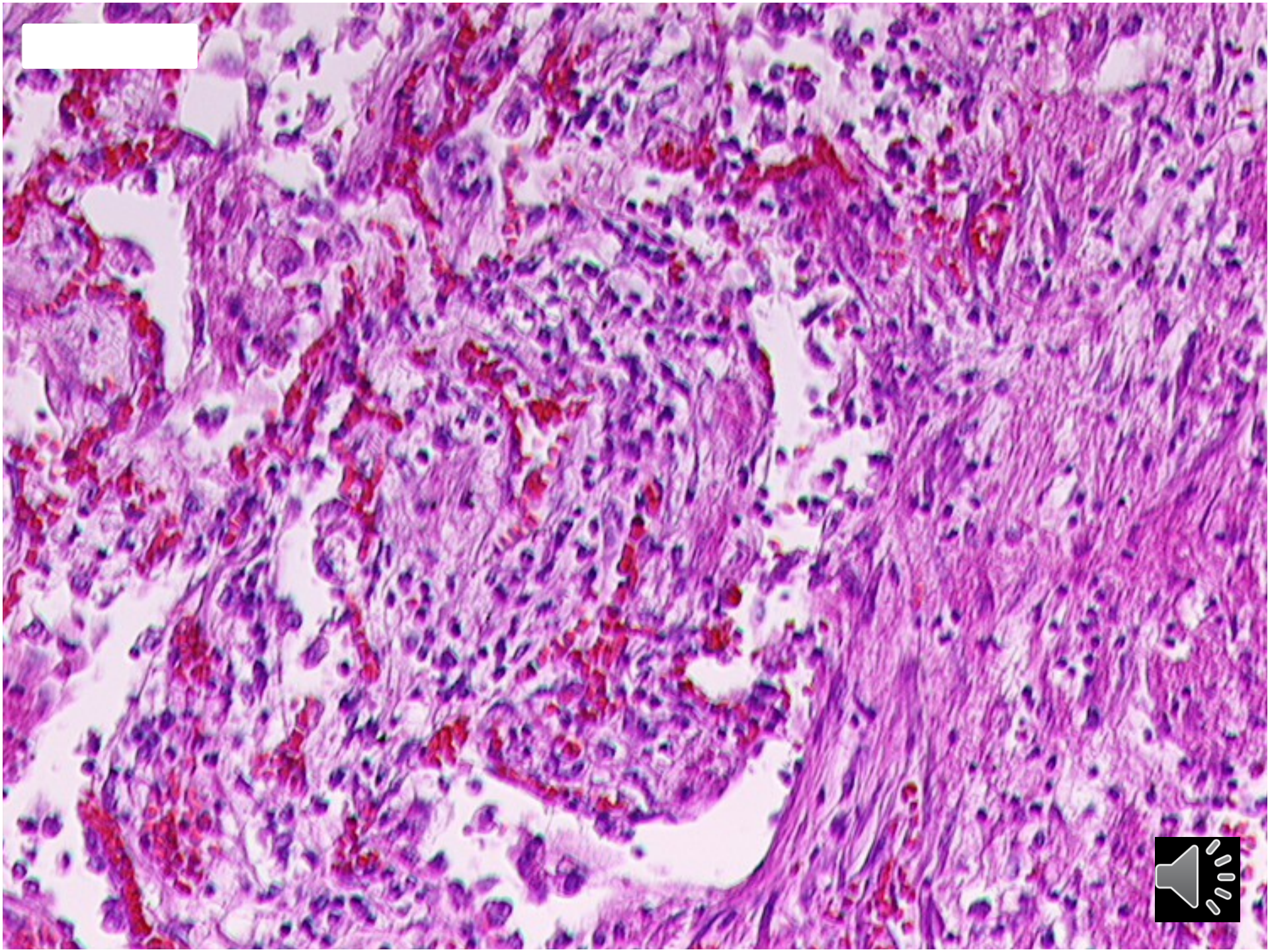












Diagnosis

Morbus principalis

Aetas provectora (92 anni).

Atherosclerosis universalis gravis
praecipue aa. basalia cerebri.



Diagnosis

Complicationes

Encephalomalaciae partim rubrae corticis et subst. albae loborum frontaliu[m] cerebri.

Pancreatitis chronica fibroproductiva. Pseudocystis postnecrotica capitis pancreatis. Emphysema pulmonum vesiculare atrophicum. Bronchopneumonia fibrinosopproductiva focalis

Causa mortis

Oedema cerebri.



Malignity nepotvrzené pitvou

- ◆ klinická úvaha vede k metastáze vzhledem k vzrůstající incidenci a prodlužujícímu se dožití
- ◆ nedostatečné **diferenciálně diagnostické myšlení**
- ◆ „**ZLATÝ STANDARD**“

PRO POTVRZENÍ MALIGNITY JE
BIOPSIE

