

žena 26 let



# Anamnéza - 1.

- ❖ mononucleosis v dětství
- ❖ 2 roky před smrtí v 9. týdnu gravidity opak. stavy amenace, hospitalizována na Psychiatrické klinice
- ❖ zjištěna hypoglykemie 1,2mmol/l
- ❖ převezena na interní kliniku
- ❖ po dvou týdnech interupce



# Anamnéza - 2.

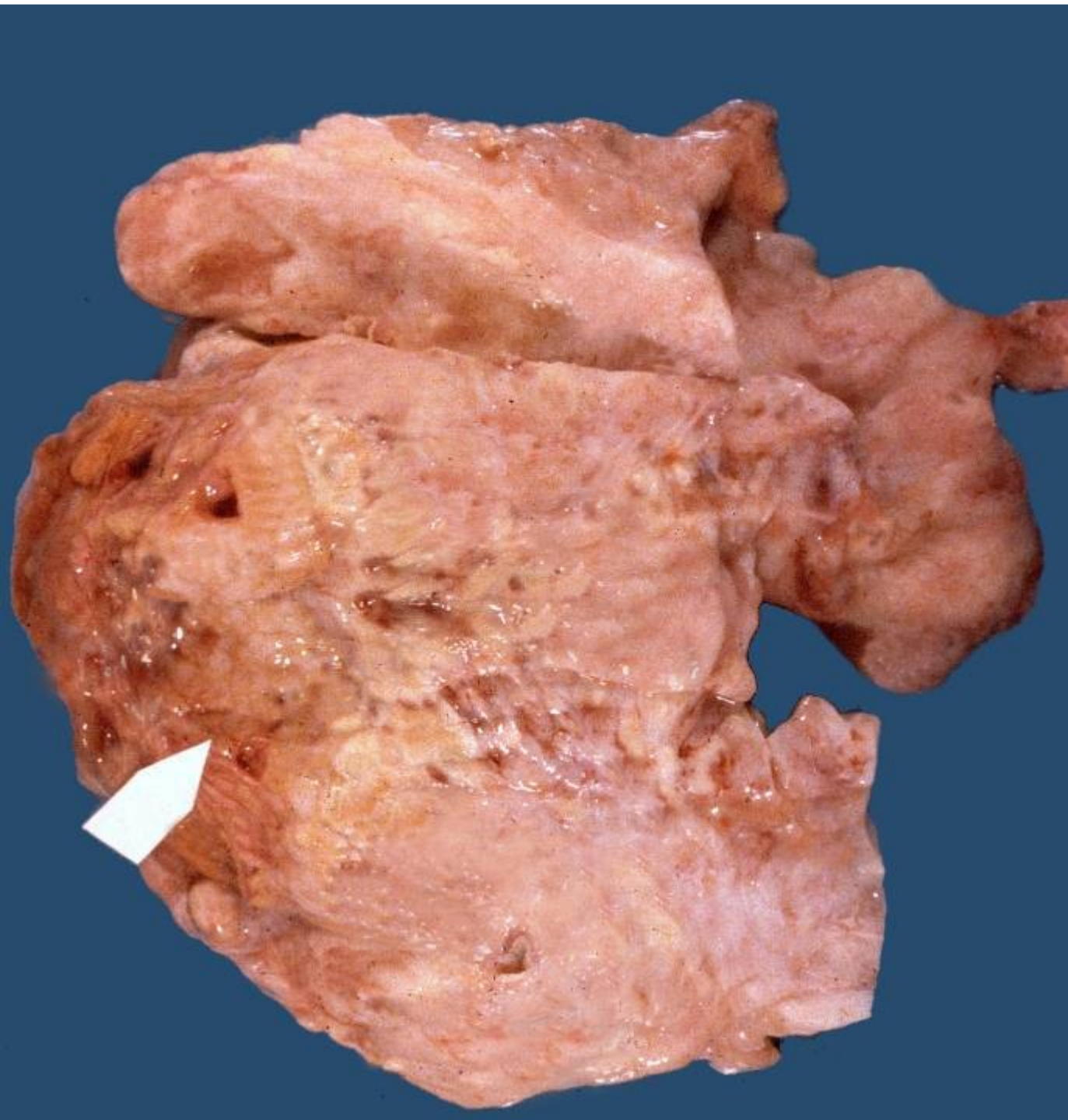
- ❖ explorativní laparotomie - tumor pankreatu s metastázami do jater
- ❖ v odebrané biopsii nádor nezastižen
- ❖ další dva měsíce cykly chemoterapie, horm. aktivita tumoru vymizela
- ❖ progrese nádoru s infiltrací žaludeční stěny



# Anamnéza - 3.

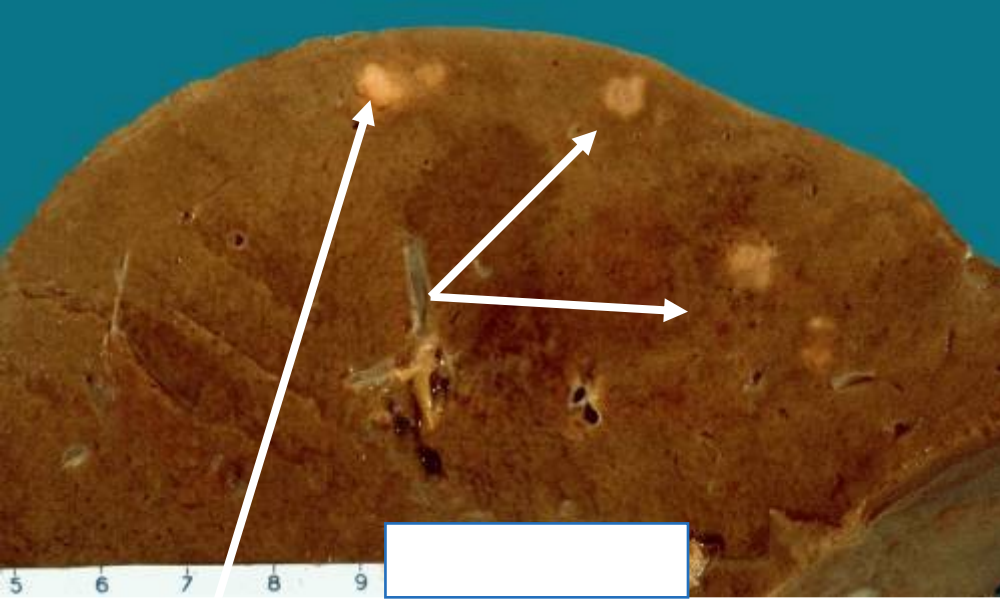
- ❖ hormonální aktivita nádoru se obnovila
- ❖ cytostatika podána do a. hepatica
- ❖ smrt dva roky po začátku onemocnění





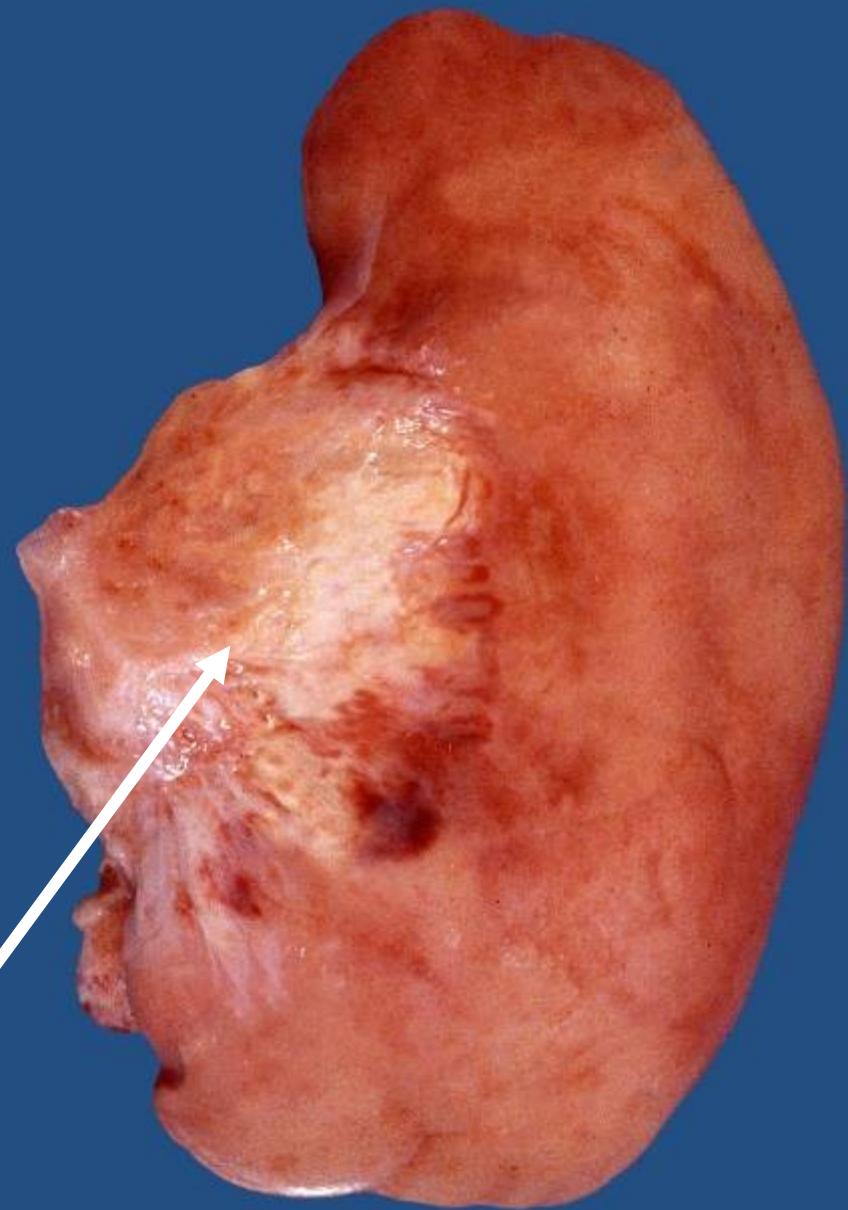
Carcinoma  
pancreatis  
neuroendo  
crinum



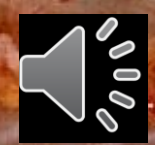
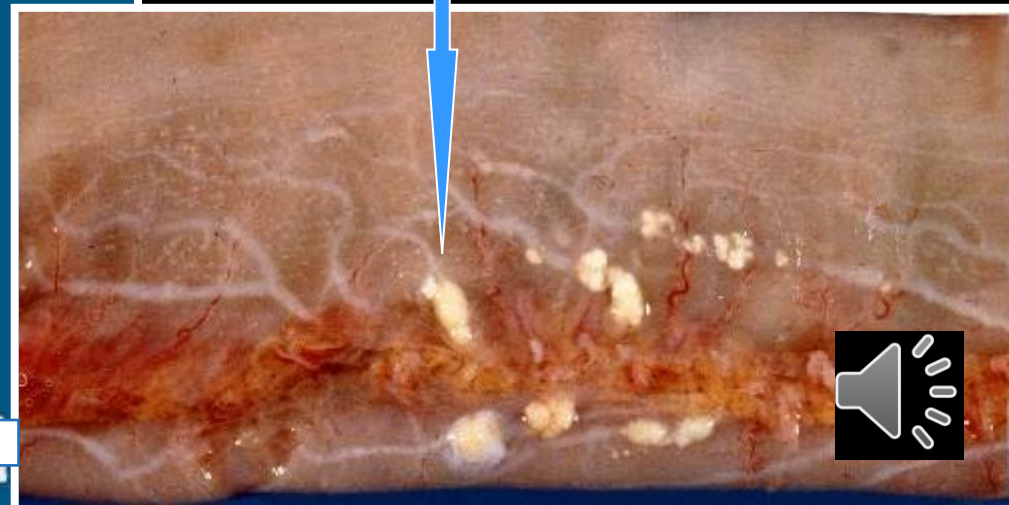
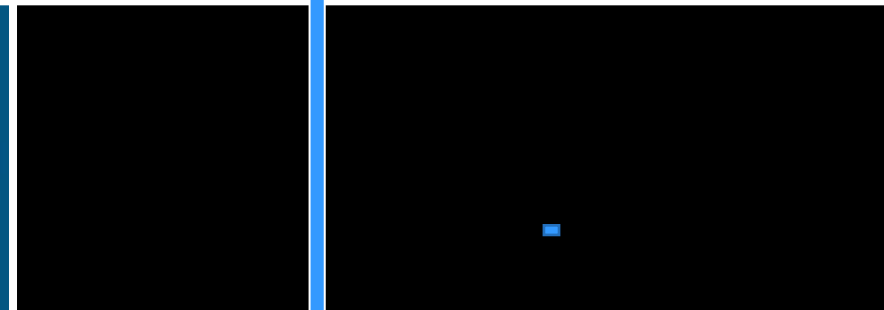
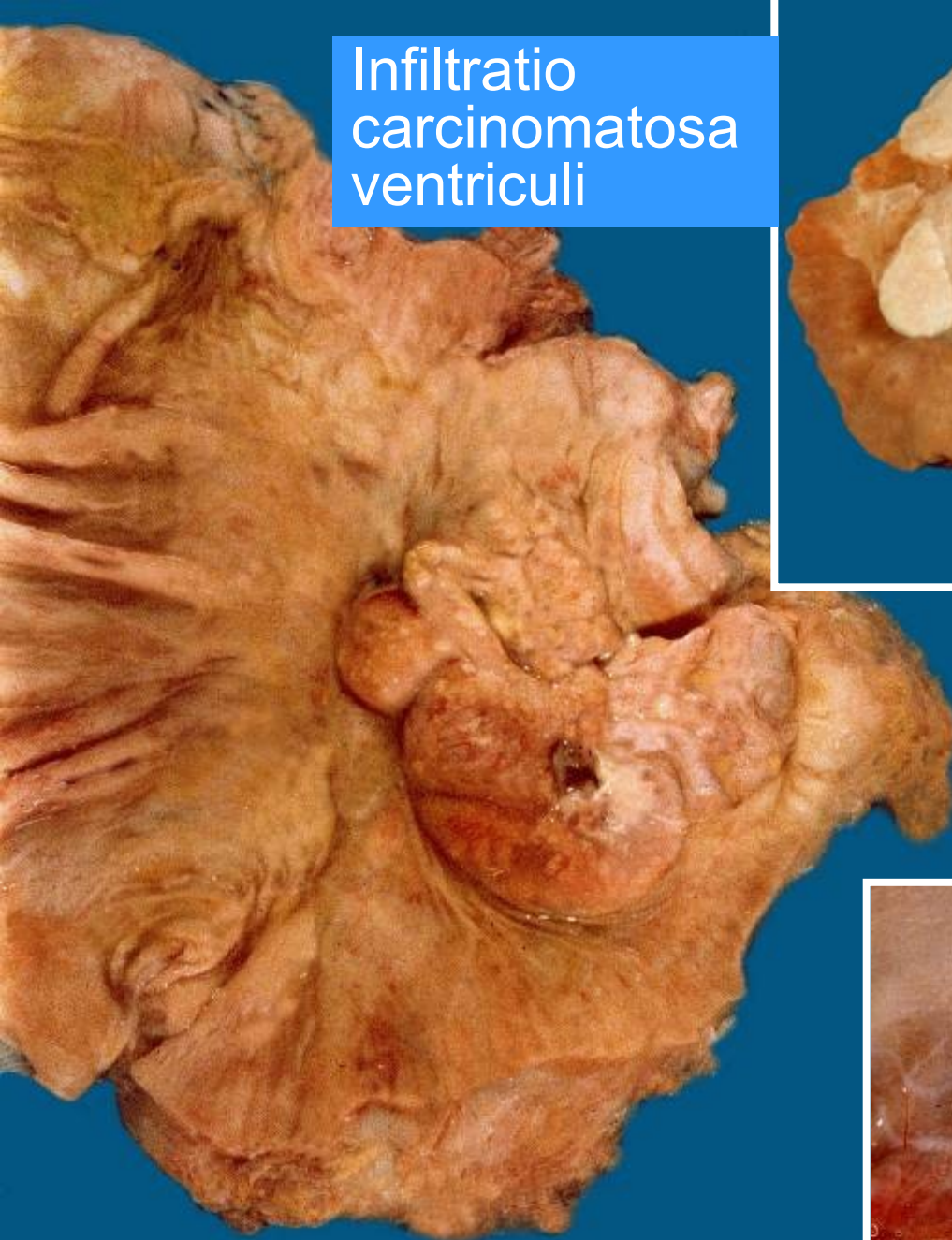


Metastases  
carcinomatosae  
hepatis

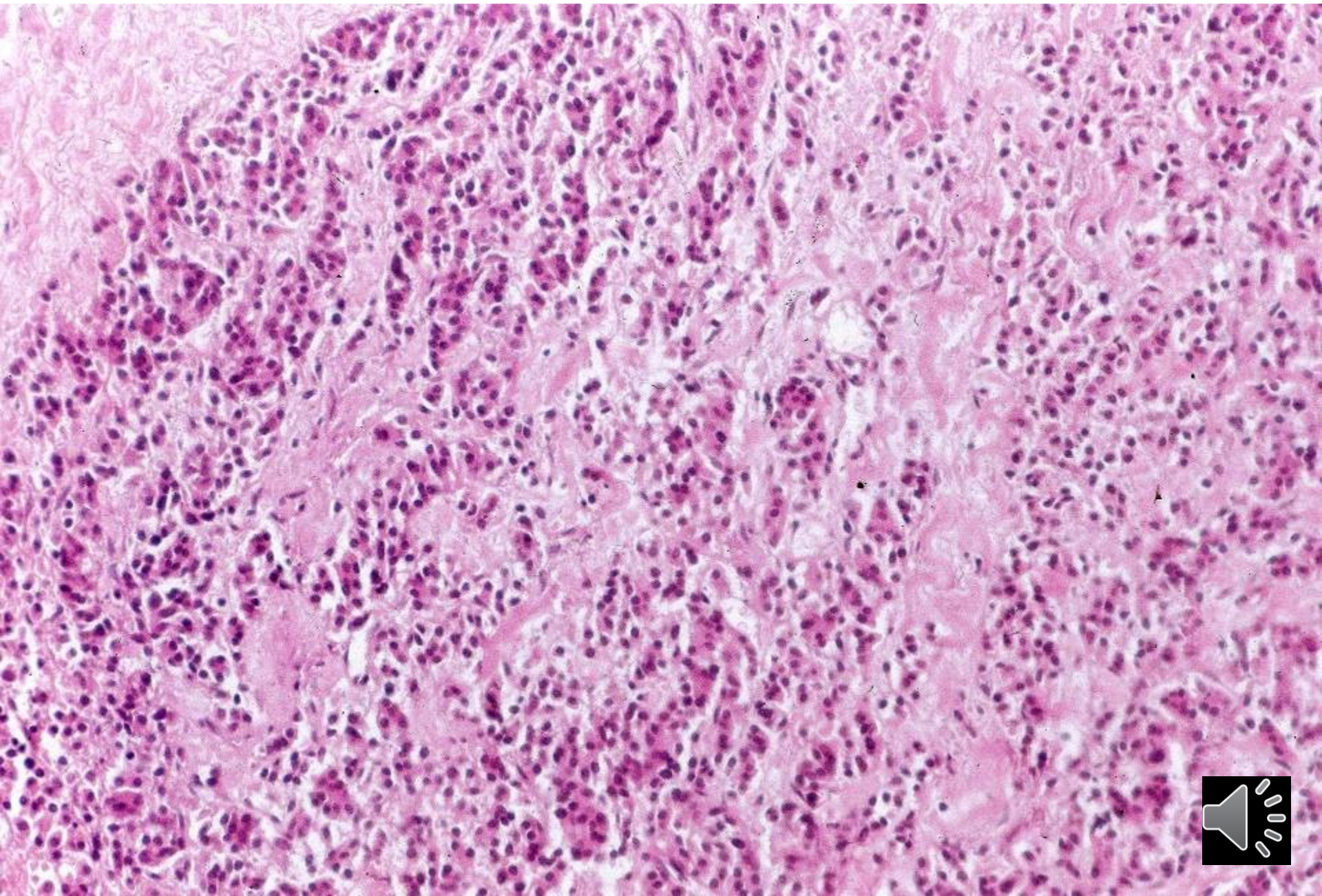
Infiltratio carcinomatosa  
retroperitonei



Infiltratio  
carcinomatosa  
ventriculi

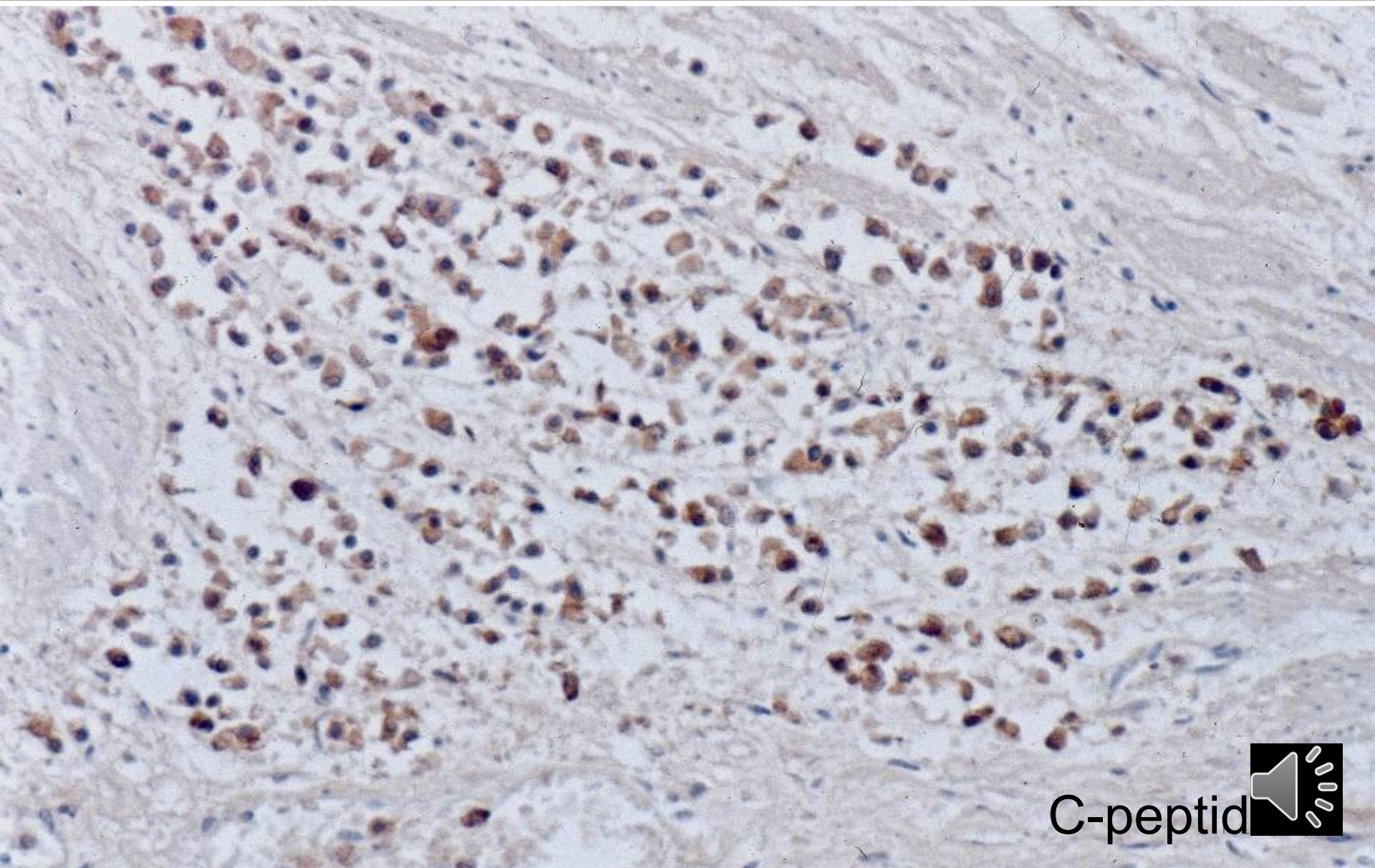


# Carcinoma parvocellulare neuroendocrinum pancreatis





# Carcinoma parvocellulare neuroendocrinum pancreatis



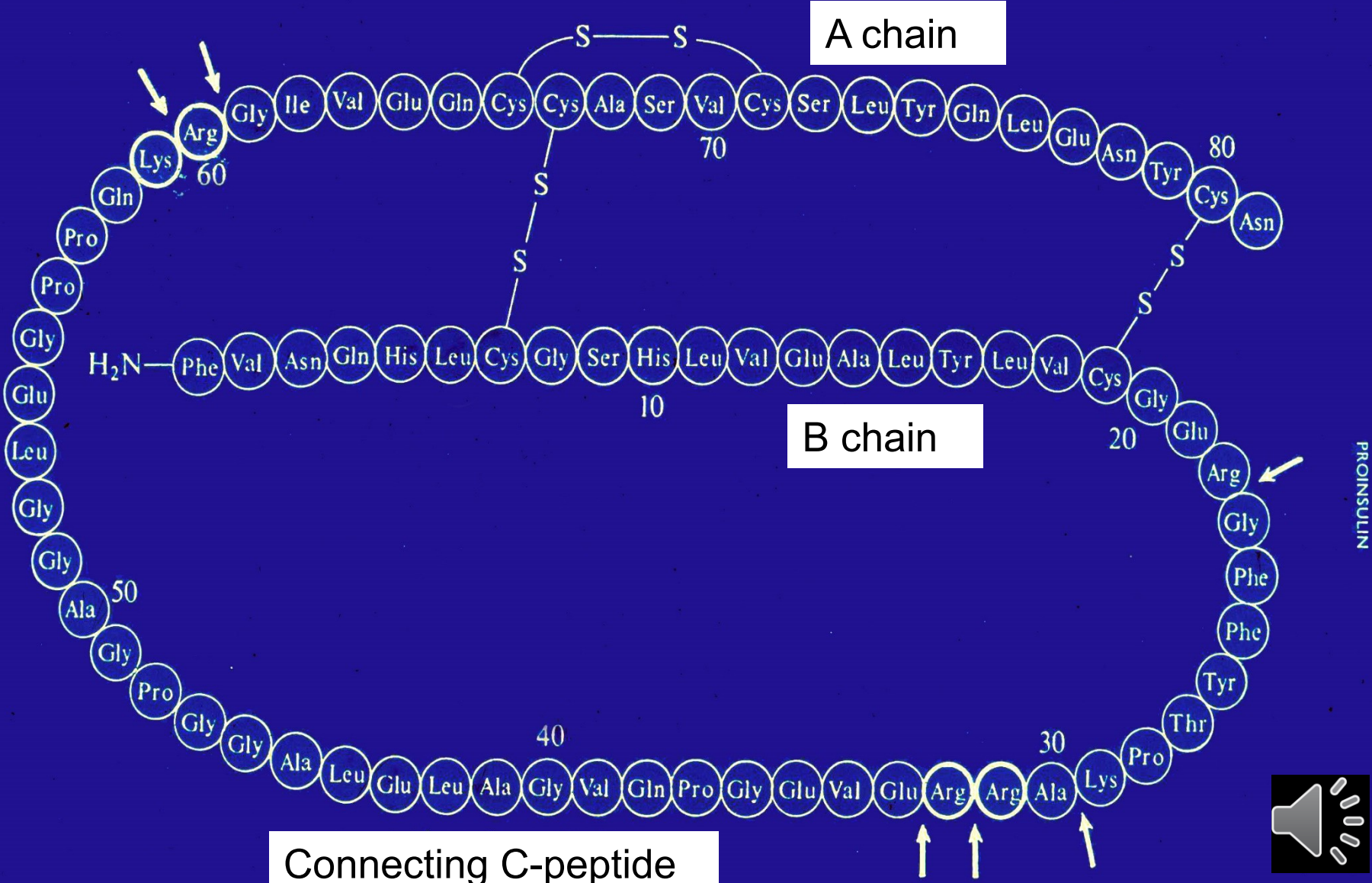
C-peptid



C-peptide



# Proinsulin



# C- peptide

- ❖ proteolytic phragment of proinsulin secreted (equimollar quantities) by beta-cells of Langerhans islets



# Diagnosis

## Morbus principalis

Carcinoma neuroendocrinum parvocellulare pancreatis ad parietem ventriculi et reoperitoneum progressum

## Complicationes

Metastases carcinomatosae Inn.  
mesentericorum, hepaticorum, iliacorum.  
Hyperinsulinismus.

## Causa mortis

Generalisatio carcinomatis



# Hyperinsulinismus

## ❖ při nádoru endokrinního pankreatu

- ❖ nejčastěji B-bb. NESIDIOM (insulinom) - **BENIGNÍ**
- ❖ vzácný v těhotenství
- ❖ maligní nádor z B-bb.

neuroendokrinní karcinom / nesidioblastom

extremně vzácný

## ❖ paraneoplastická hypoglykemie

- ❖ mesenchymální retroperitoneální, adrenokortikální nádory, nádory GIT



# žena 75 let

- ❖ 30 let syndrom akromegalie
- ❖ odmítla chirurgické řešení
- ❖ léčena symptomaticky
  - ❖ hyperfunkce thy. – Carbimazol
  - ❖ kardiomegalie - kardiotonika
  - ❖ 5 let před smrtí ca coli – chir. odstraněn
  - ❖ 6 let před smrtí kortikoidně substituována
  - ❖ smrt kardiálním selháním



# Hypertrophica excentrica cordis

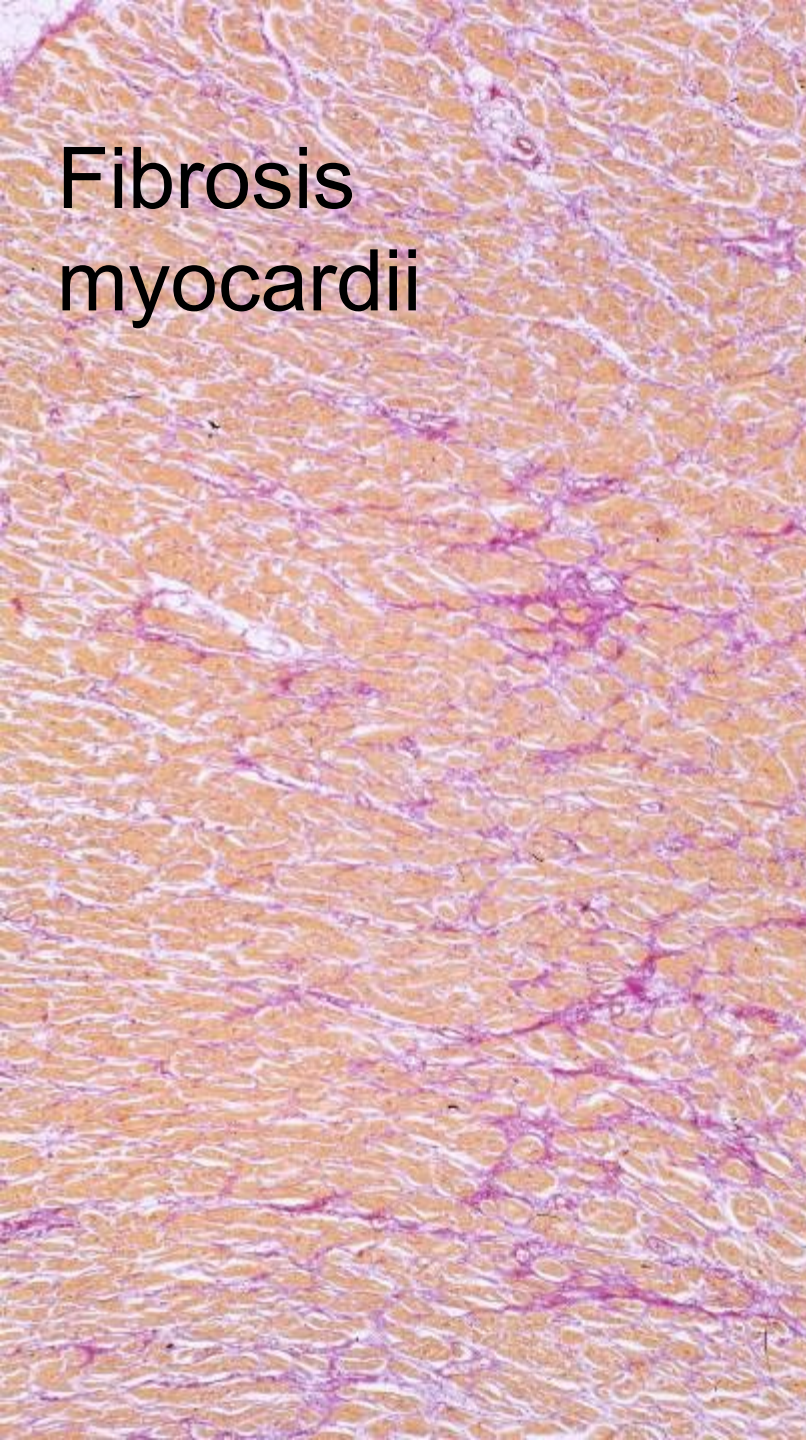


cor  
610g

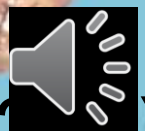




Fibrosis  
myocardii



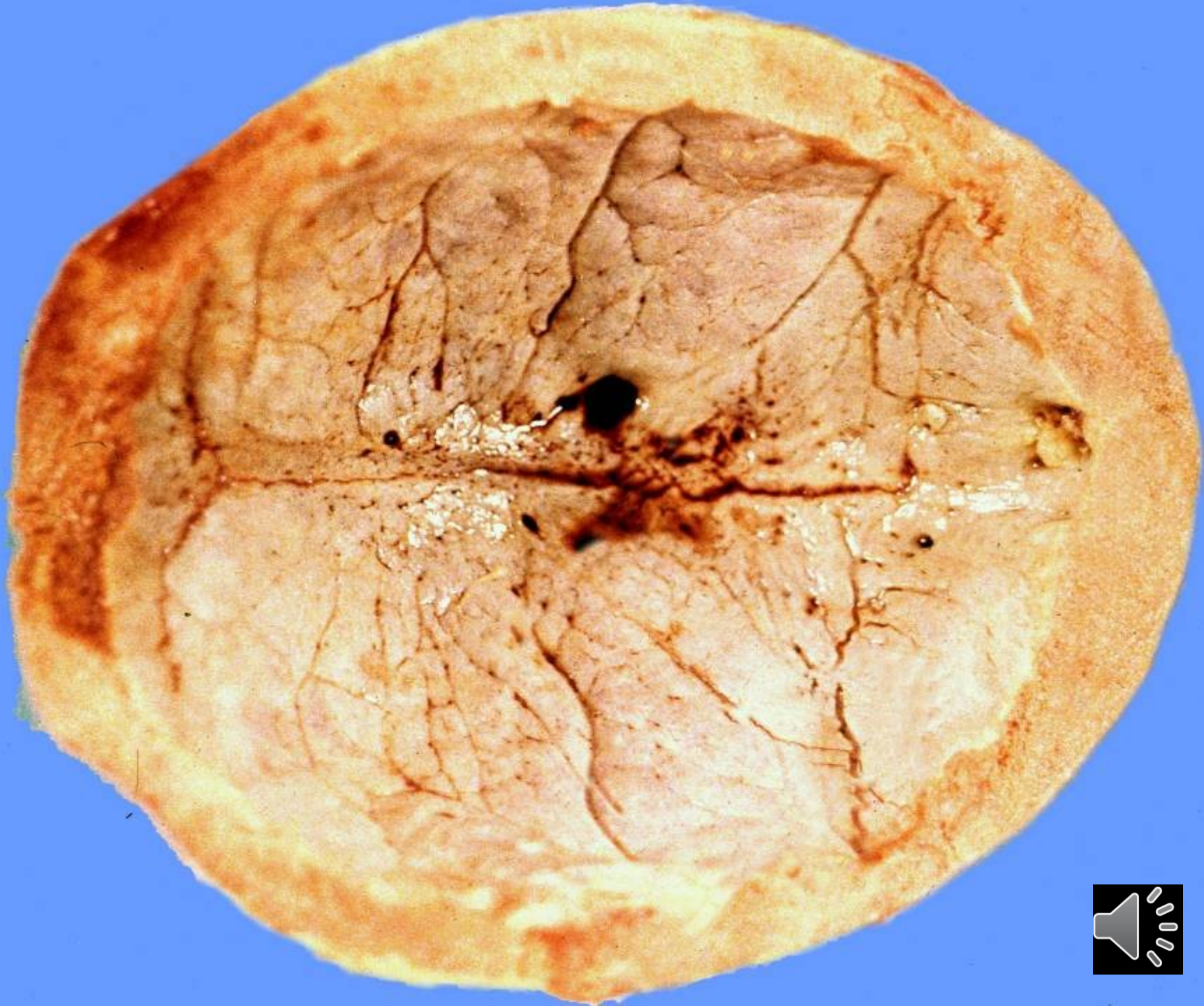
Oedema pulmonum (720g)

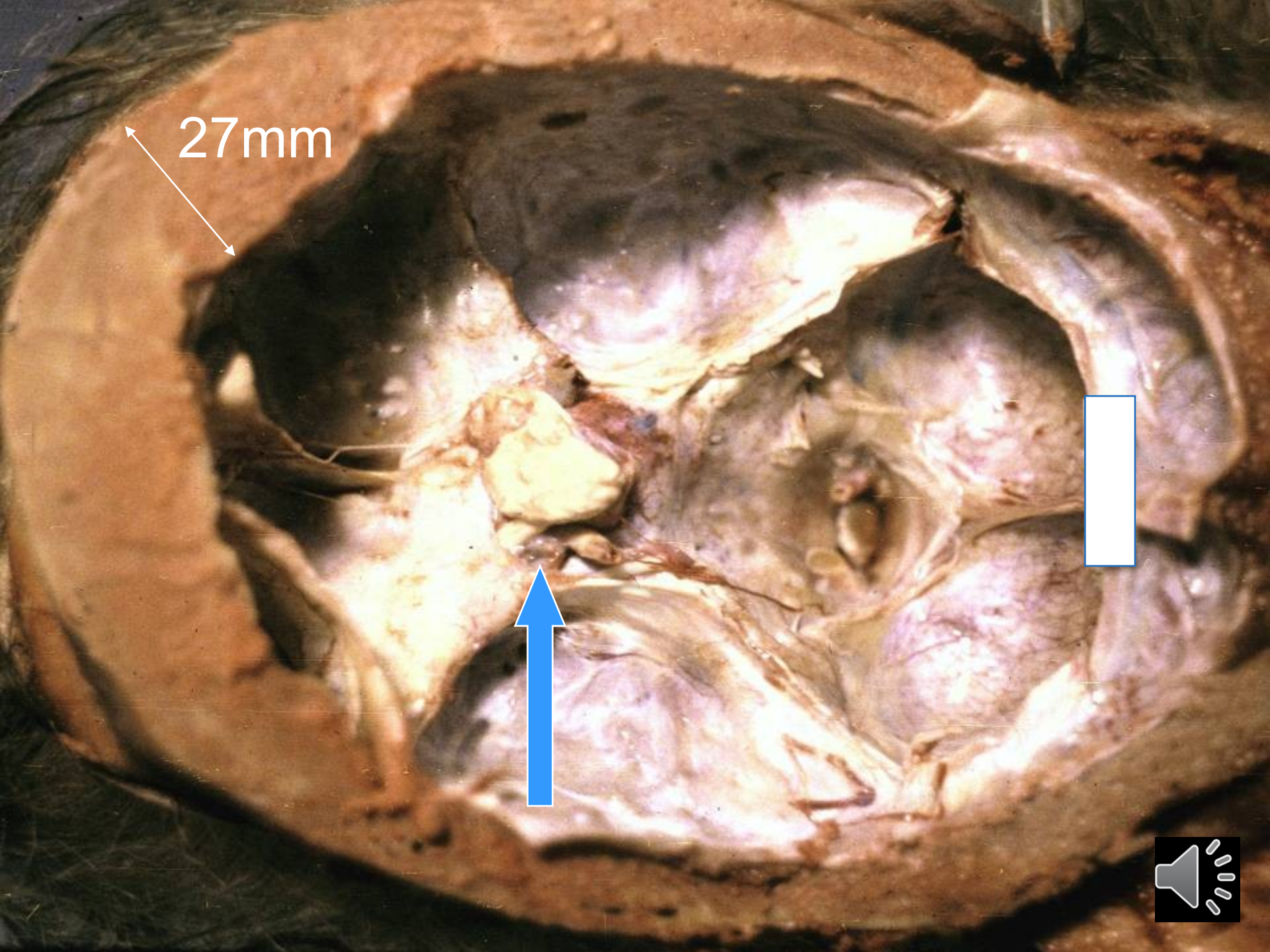




Acromegalia

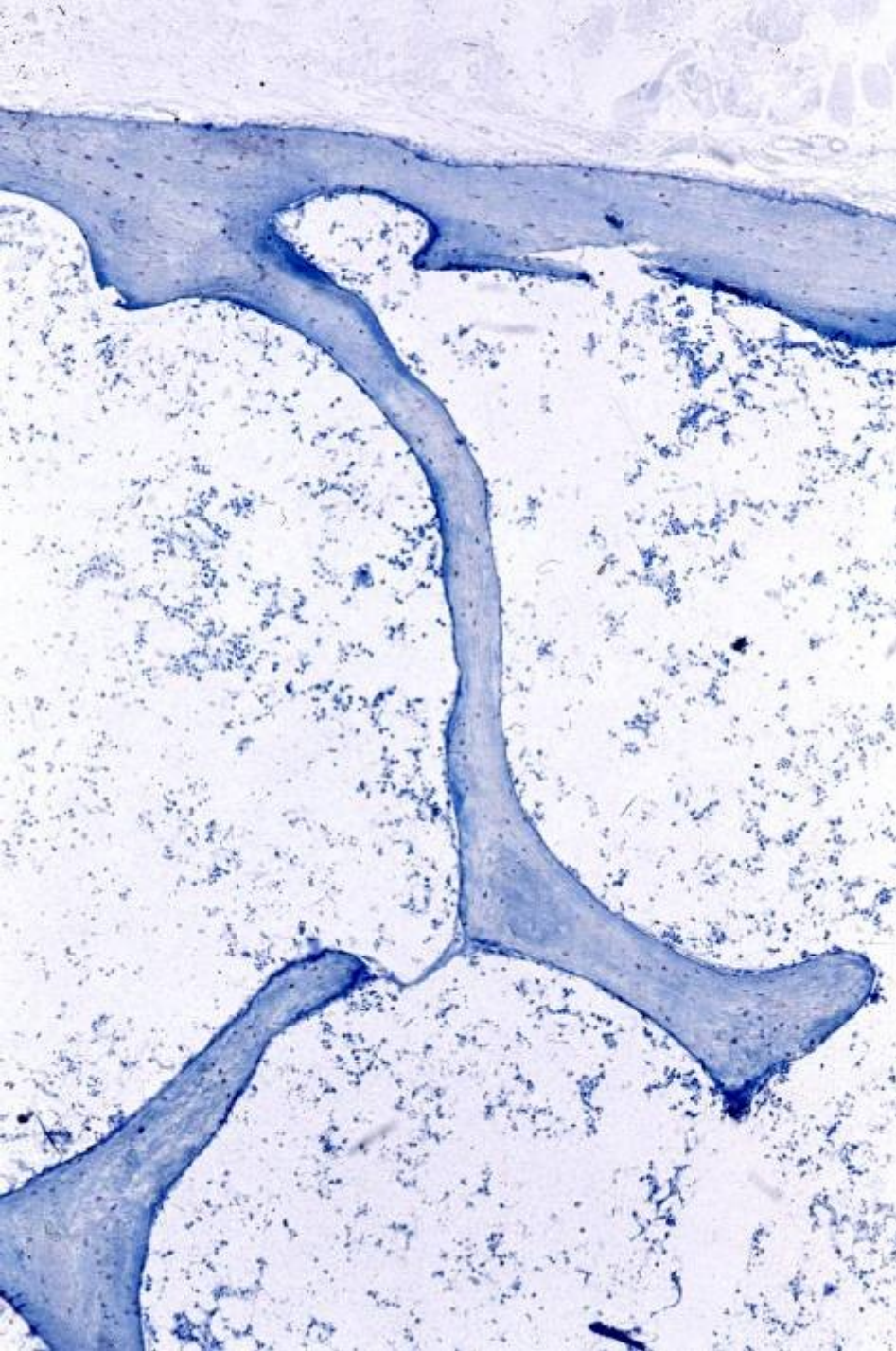




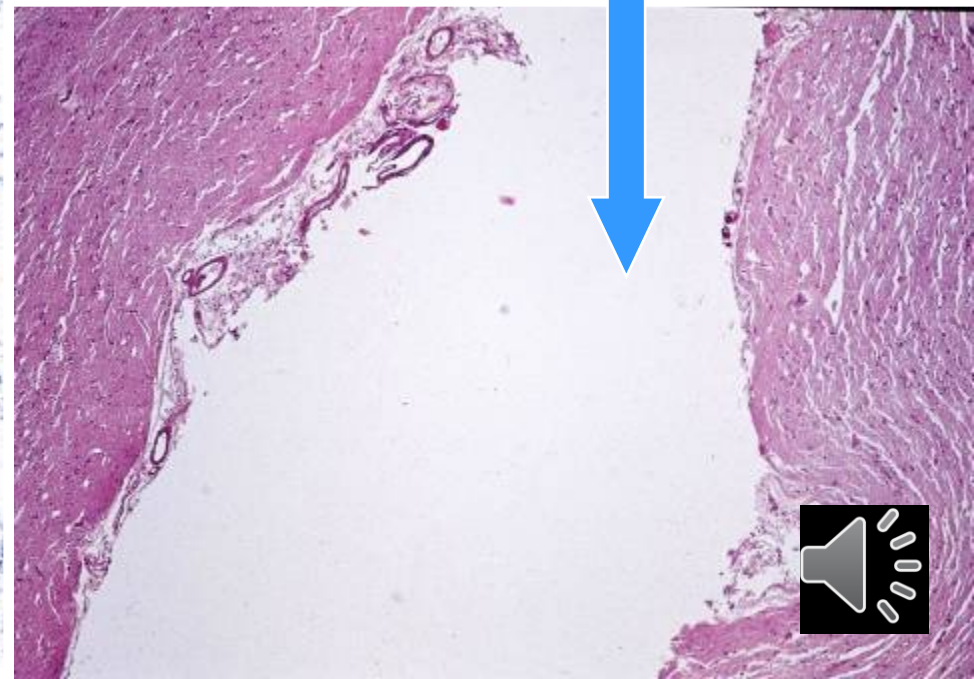


27mm

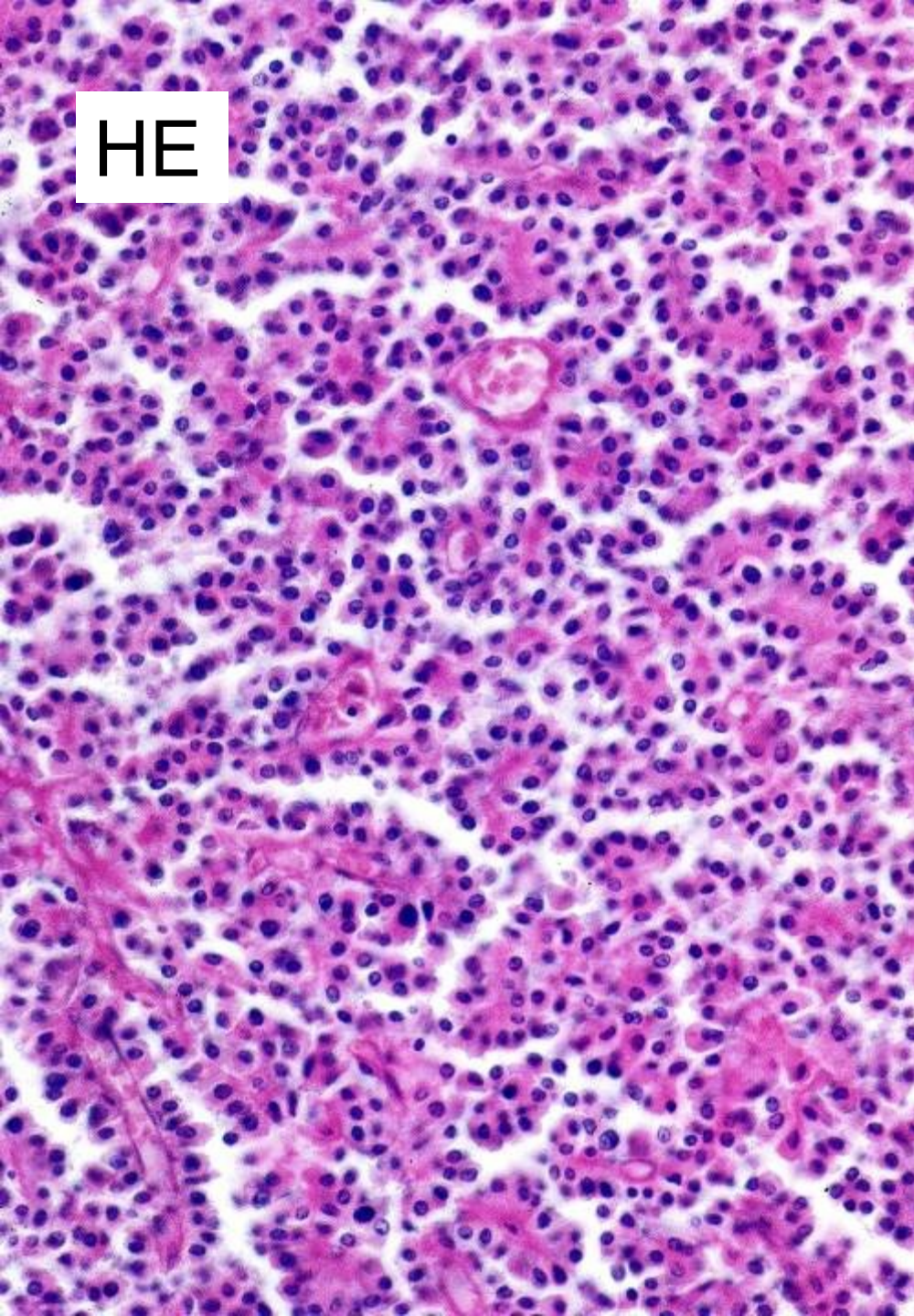




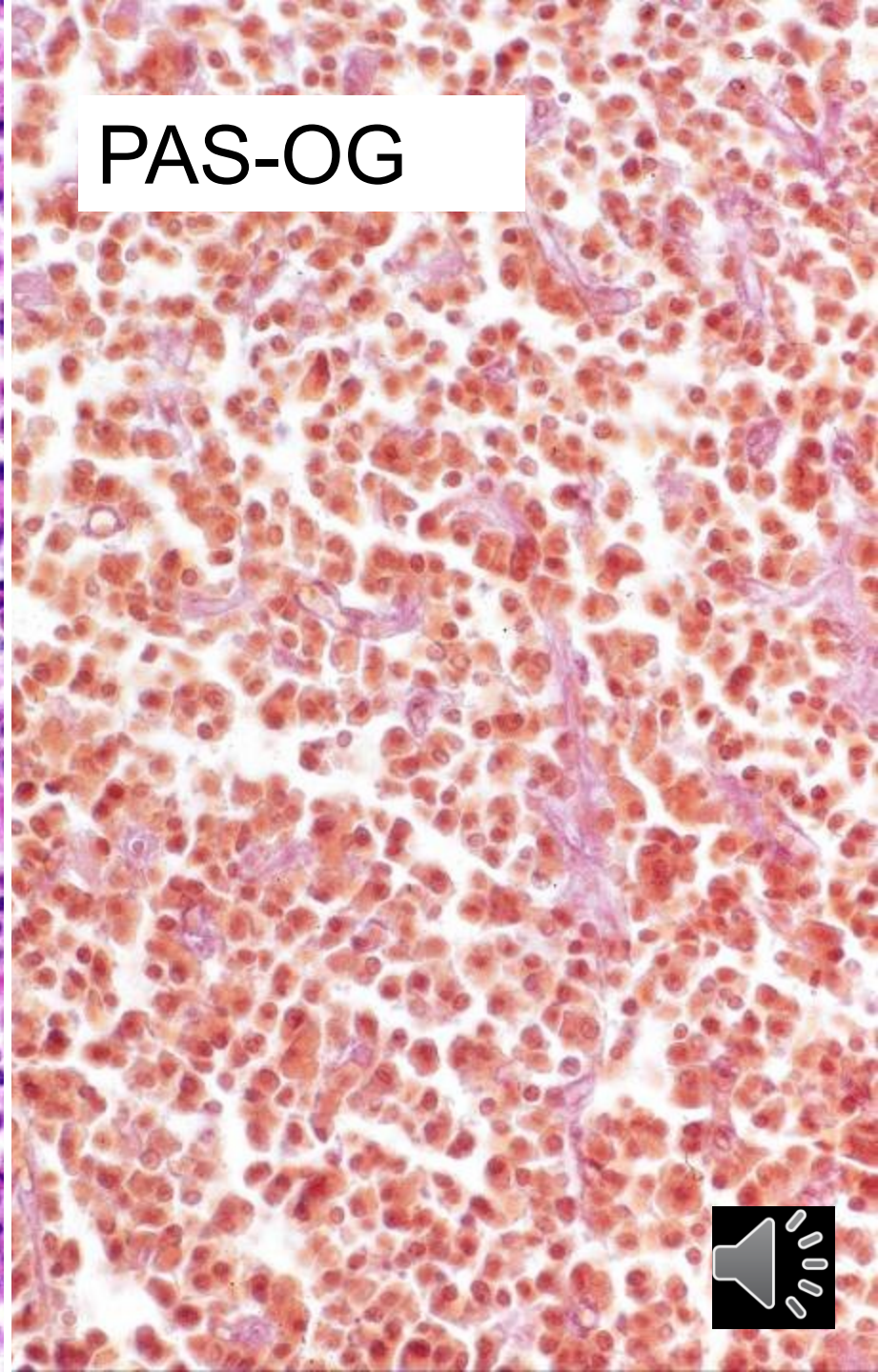
Pseudocystis  
postencephalomalacia  
hypothalami



HE



PAS-OG



# Plurihormonální a plurifunkční adenom hypofýzy se syndromem akromegalie

STH +++

TSH +++

Prl ++

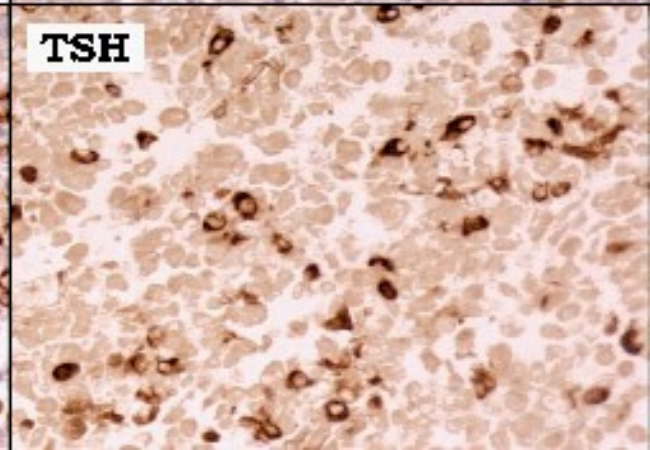
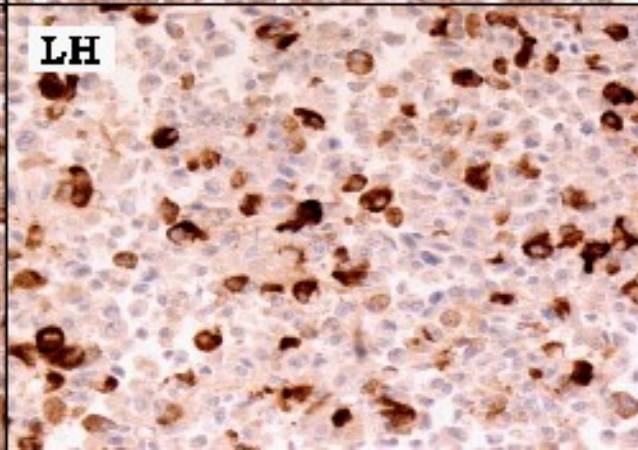
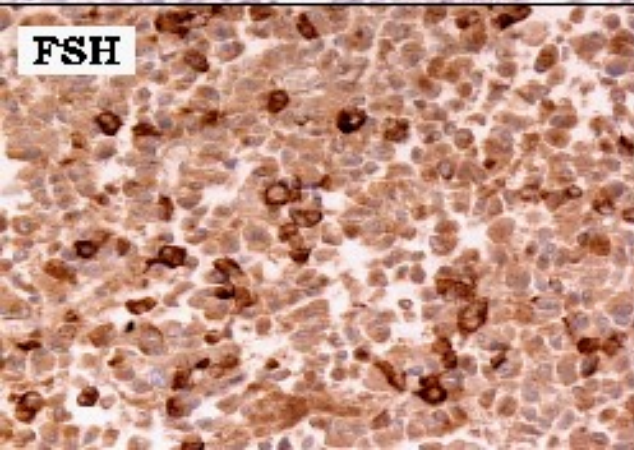
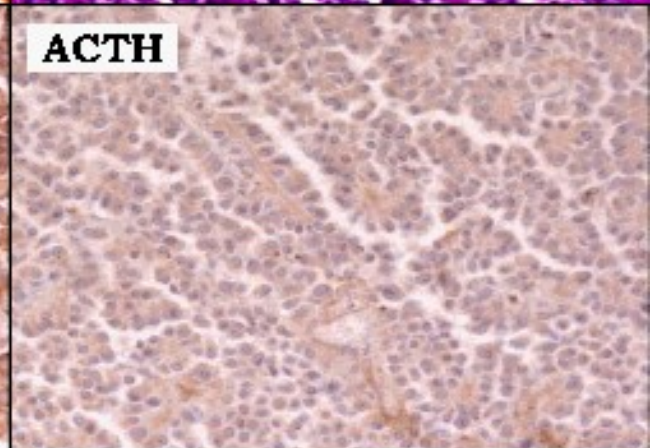
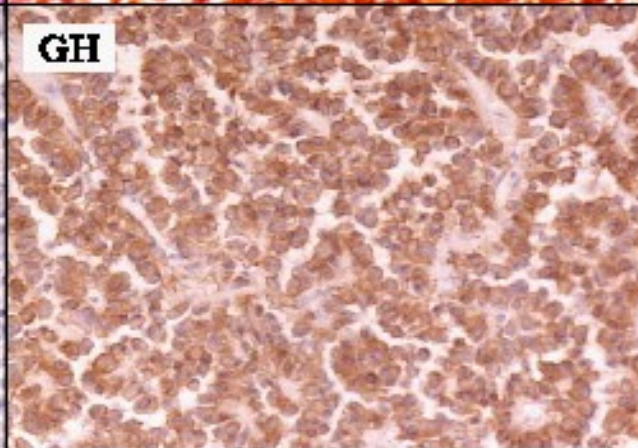
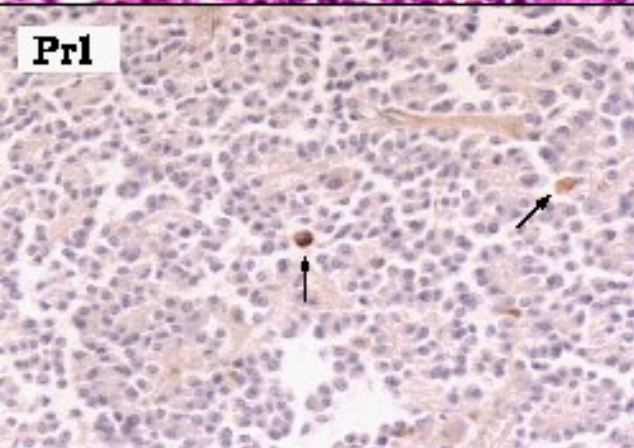
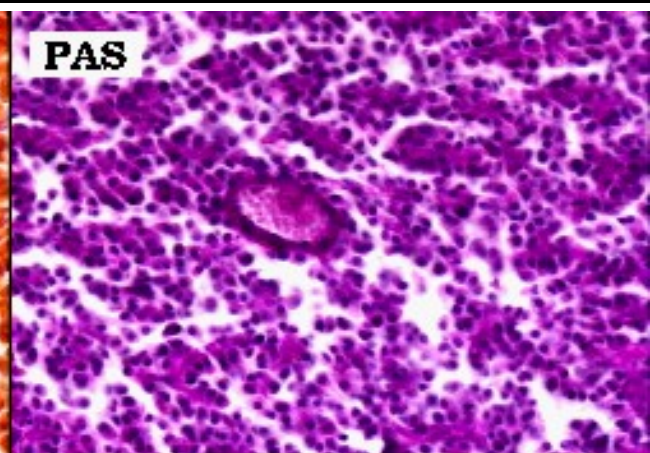
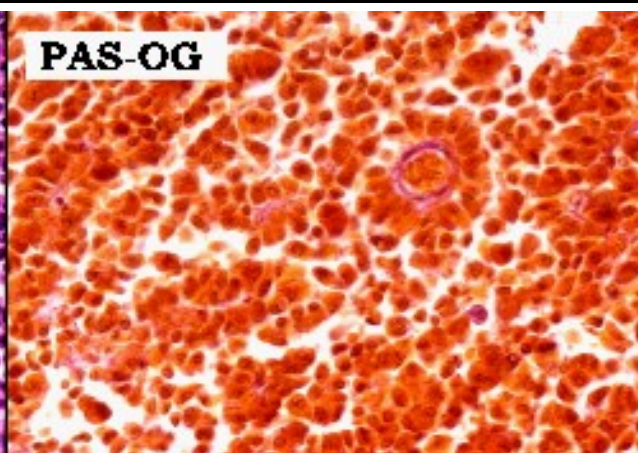
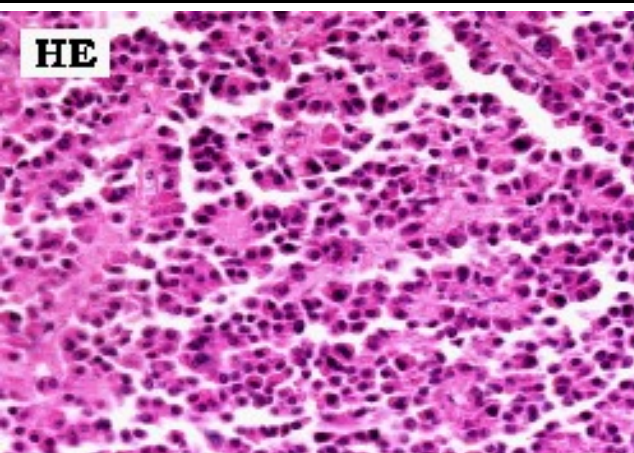
FSH (beta)+

ACTH ++

LH (beta)+



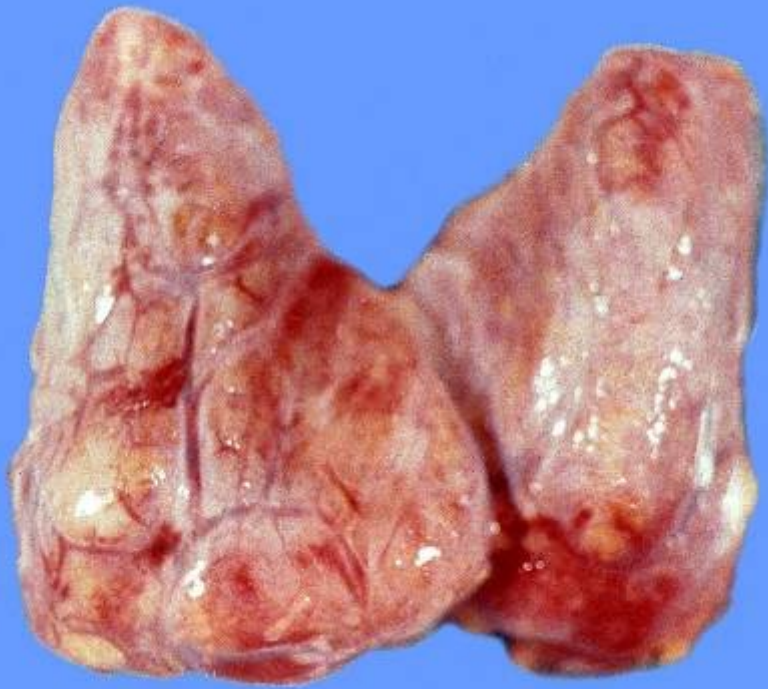
# Adenoma hypophysis





hyperplasia

gl. thyreoideae 125g



hyperplasia  
gl. suprarenalium  
25g

