



Anatomie

Lenka Krobová

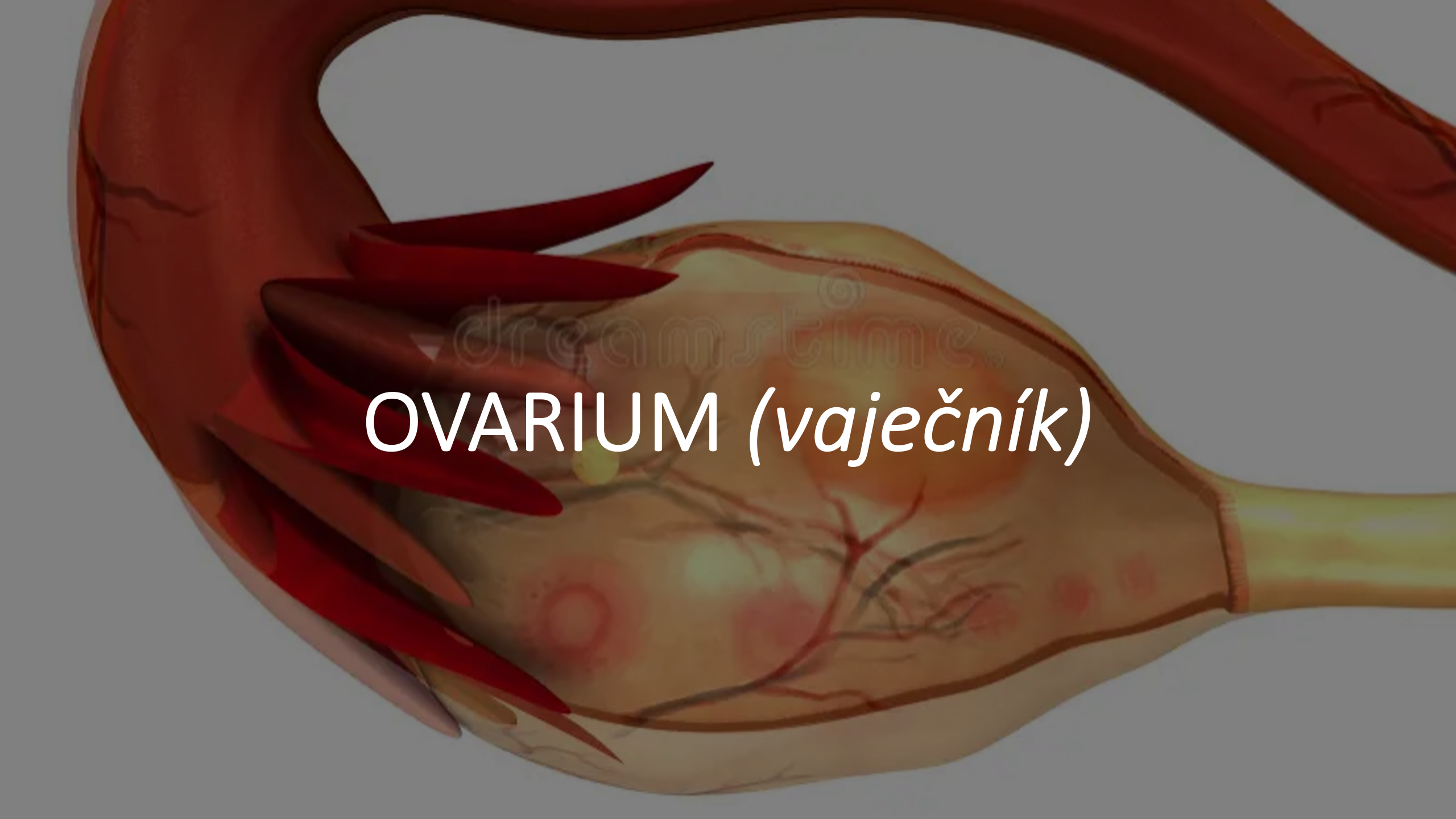
Rozdělení

Vnitřní rodidla

- Vaječníky
- Vejcovody
- Děloha
- Pochva

Zevní rodidla

- Hrma
- Poštěváček
- Velké stydké pysky
- Malé stydké pysky
- Poševní vchod
- Bartoliniho žlázy



dreamstime

OVARIUM (*vaječník*)

This is a detailed anatomical illustration of a human ovary. The ovary is shown in a light tan color with a textured surface. It is connected to the uterus by a fallopian tube, which is shown in a yellowish-tan color. Several fallopian tubes are shown branching out from the ovary, representing the uterine tubes. The background is a dark red color, suggesting the uterine wall. The text 'OVARIUM (vaječník)' is written in white, bold, sans-serif font across the center of the ovary. A faint watermark 'dreamstime' is visible in the background.

Ovarium (vaječník)

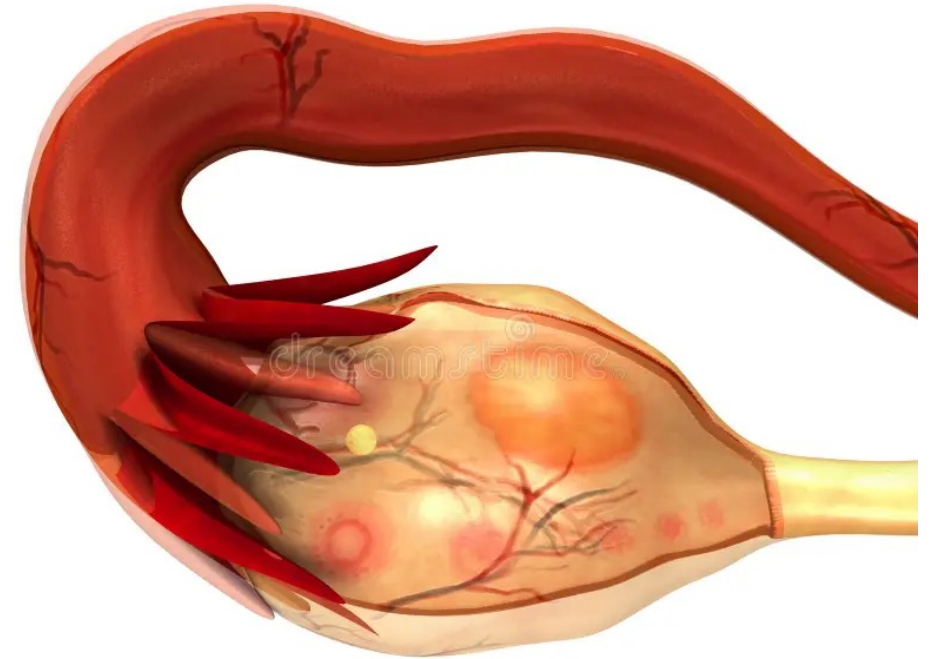
- Párová pohlavní žláza
- Cca 3x3x2 cm

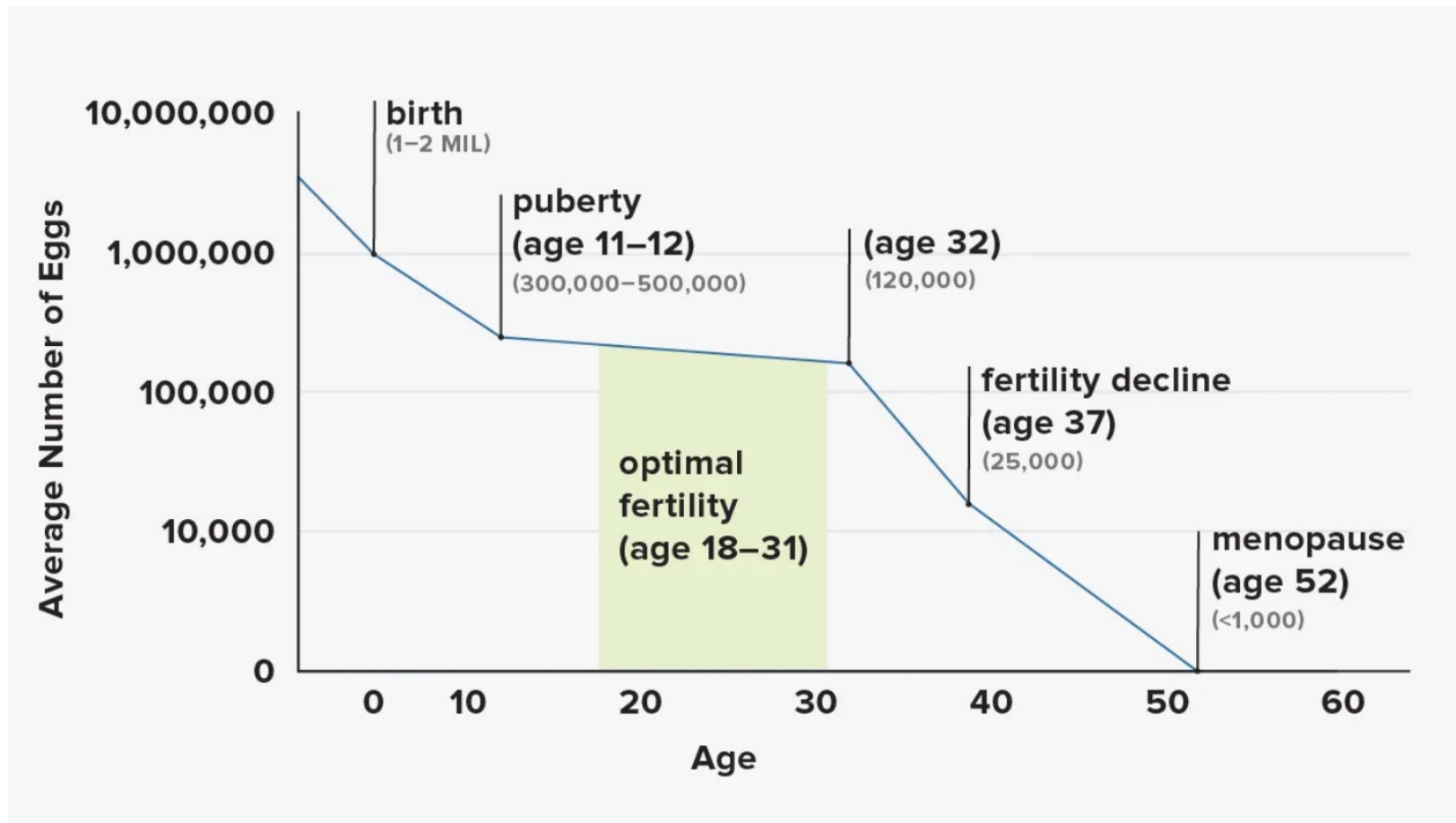
Funkce:

Vnitřní sekrece – progesteron, estrogen

Uvolňování vajíček

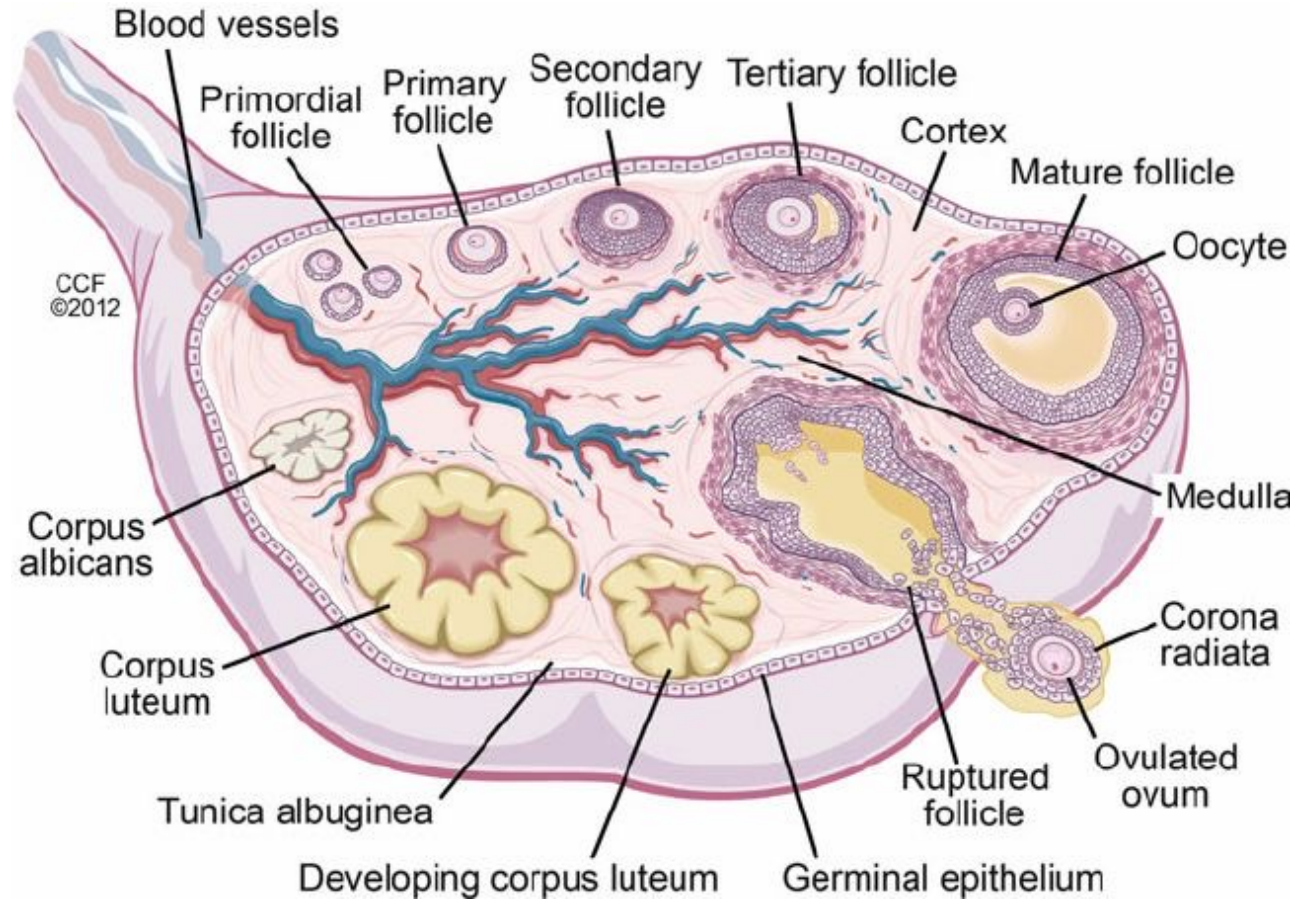
- Při narození 1-2 milionů
- Začátek puberty cca 300 tisíc





Zdroj: <https://www.medicalnewstoday.com/articles/how-many-eggs-does-a-woman-have#early-years>

Struktura



Zárodečný epitel

Tunica albuginea

Kůra (*cortex ovarii*)

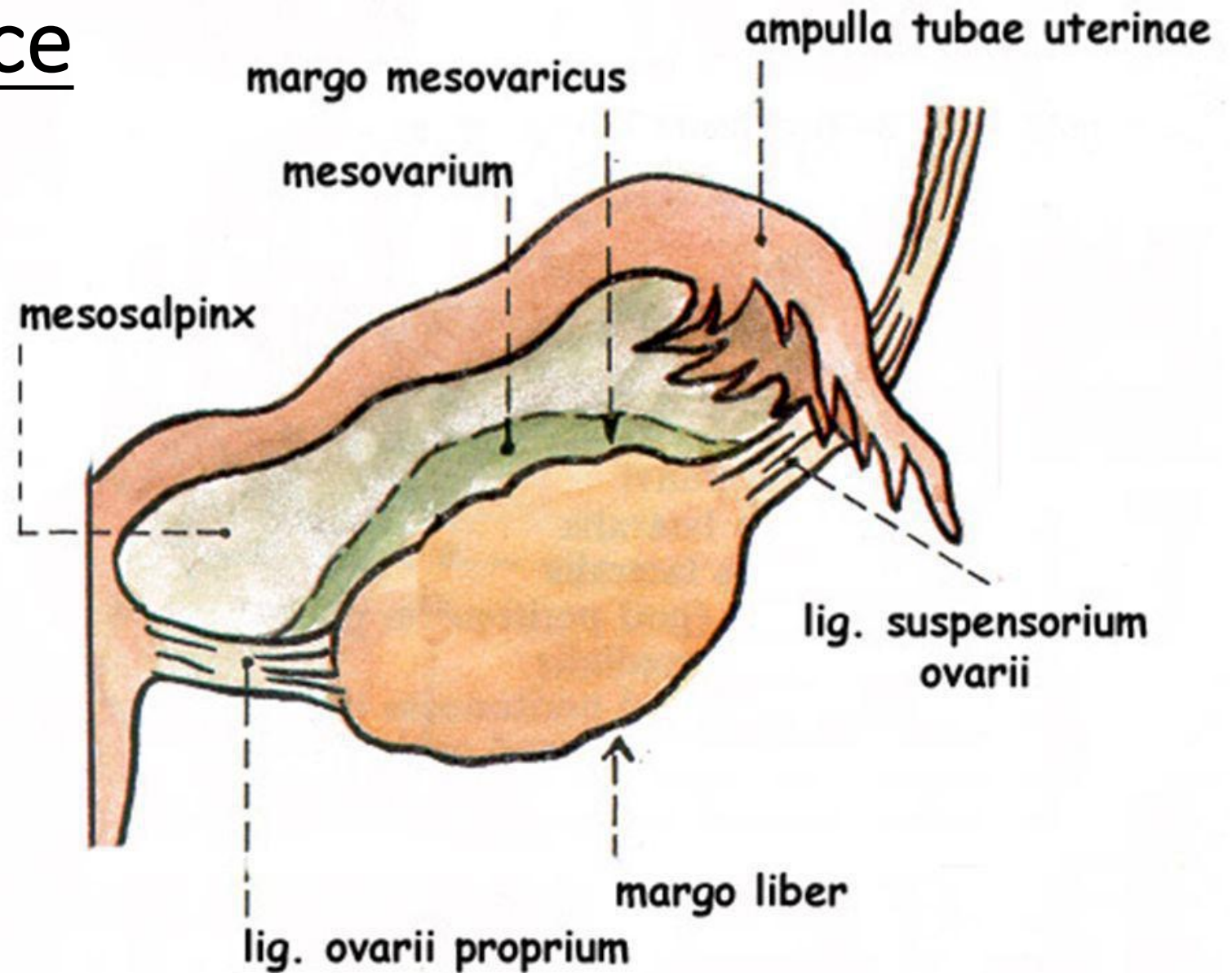
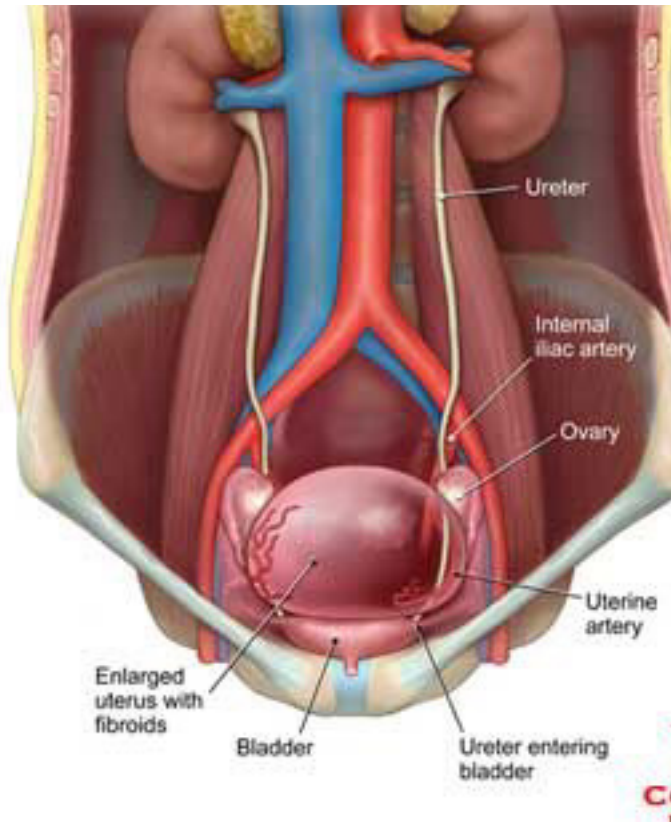
Dřeň (*medulla ovarii*)

Uložení a fixace

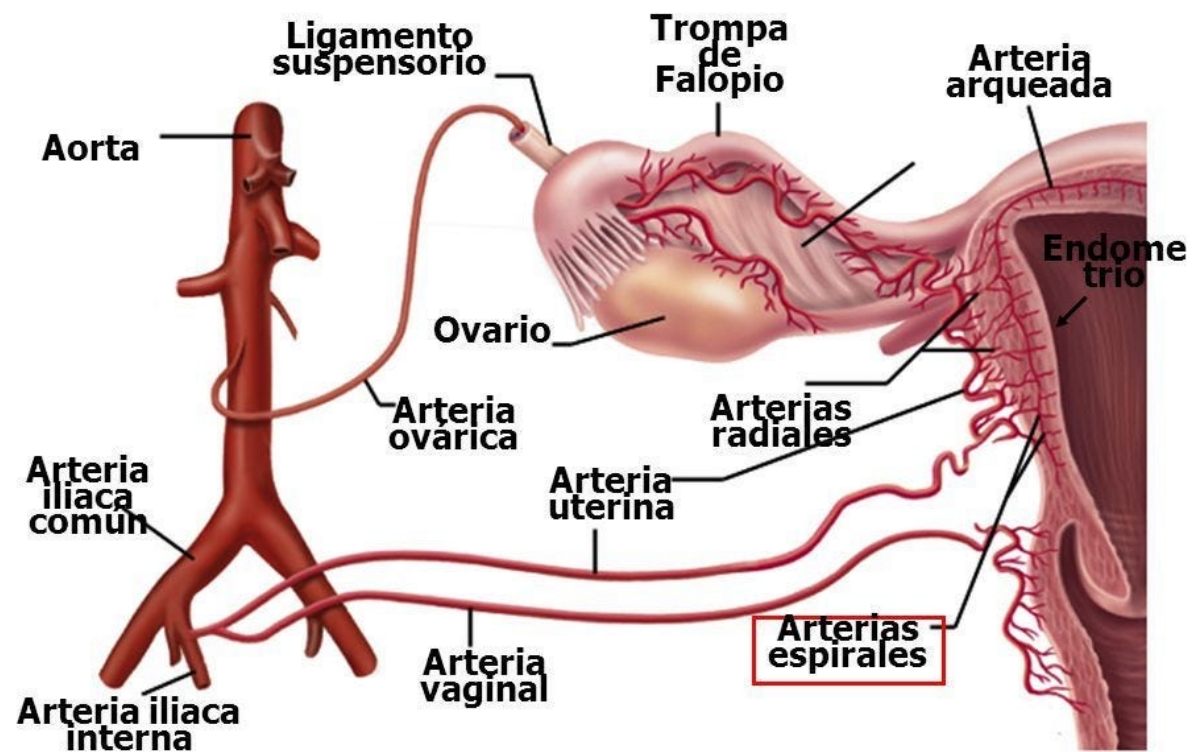
Laterálně od dělohy

U nulipar ve fossa ovarica

U multipar v Claudiově jamce



Cévní zásobení



Tepny:

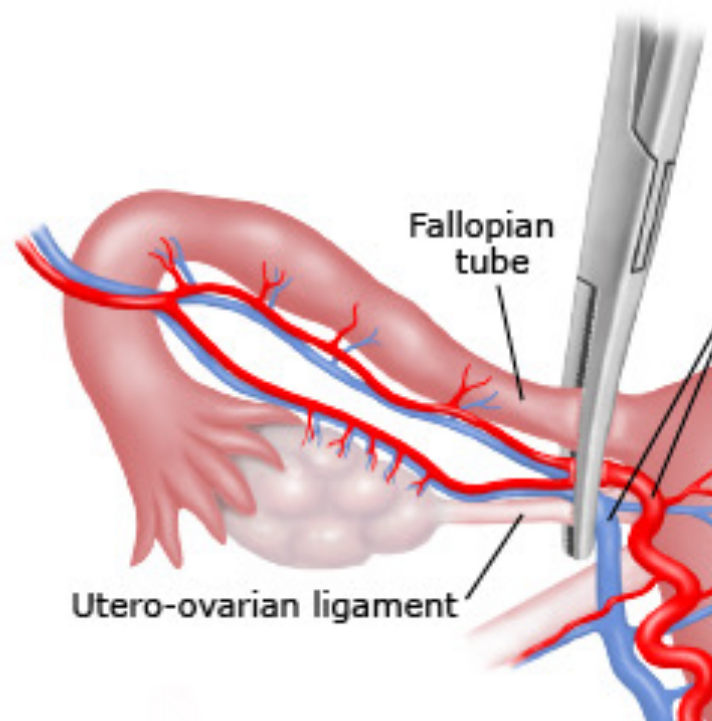
Arteria ovarica

Ramus ovaricus arteriae uterinae

anastomozují → ovariální arkáda

Žíly:

Vena ovarica



An anatomical illustration of a fallopian tube (uterine tube) in a light pinkish-red color. The tube is shown in a curved, S-like shape, connecting to a larger, rounded structure on the right, which is the uterus. The distal end of the tube is fringed with numerous finger-like projections called fimbriae. The background is a solid, muted grey color.

TUBA UTERINA (vejcovod)

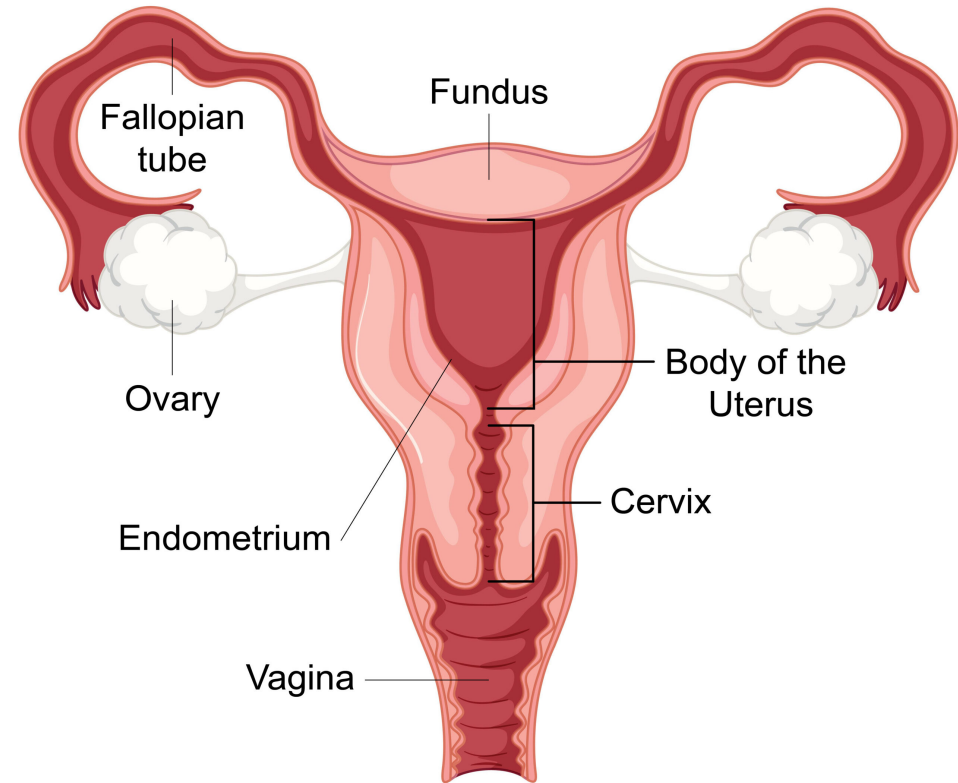
Tuba uterina, salpinx (vejcovod)

- Párová trubice
- 10-12 cm dlouhé

Funkce:

Nejčastější místo oplození vajíčka

Transport embrya do dělohy



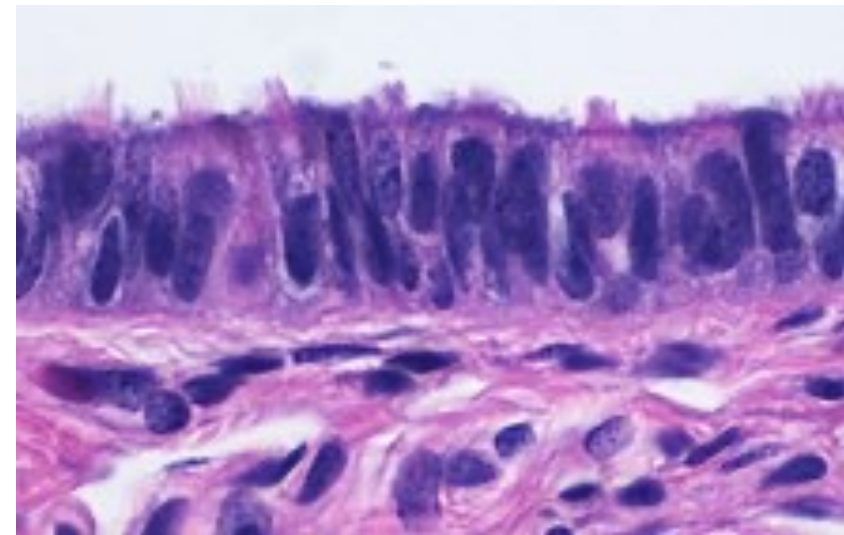
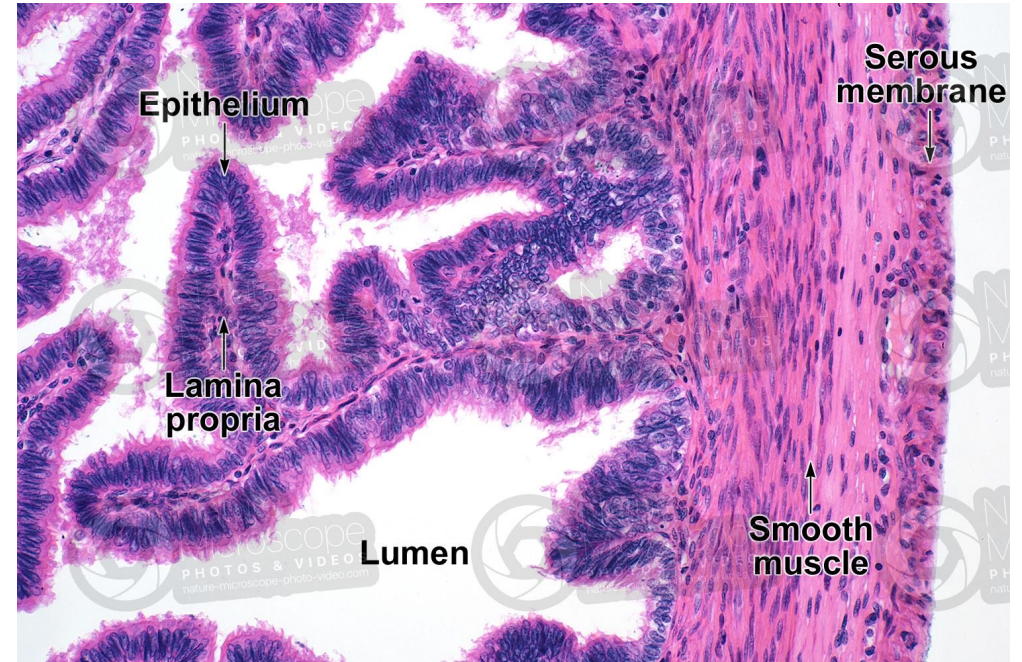
Struktura

Seróza – přechází do mesosalpinxu

Hladká svalovina – 3 vrstvy

Sliznice

- Řasy (nejvíce v ampulle)
- Epitel s řasinkovými a sekrečními buňkami



Anatomie

Části:

Fimbrie – fimbria ovarica

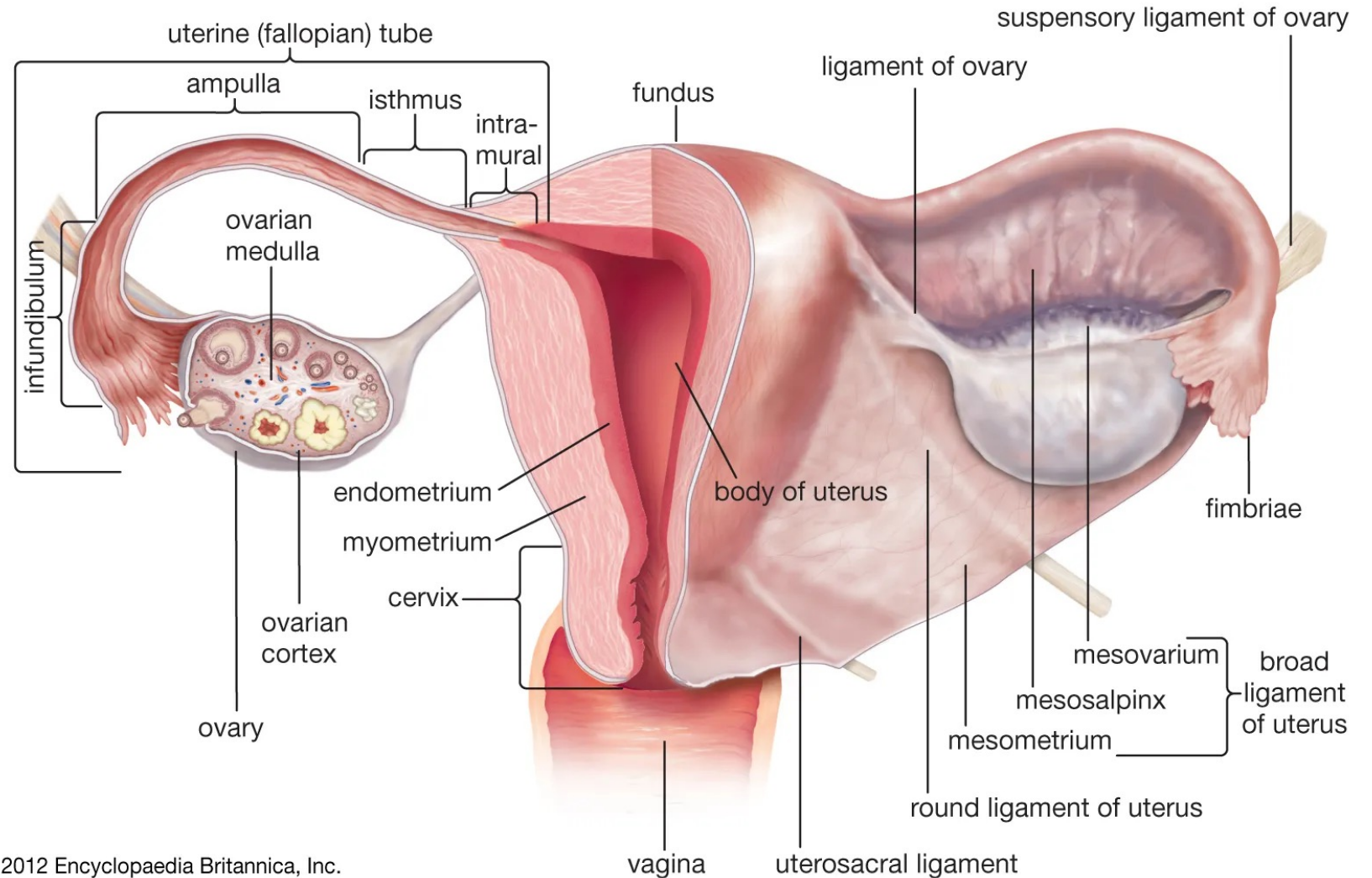
Infundibulum

Ampulla - oplodnění

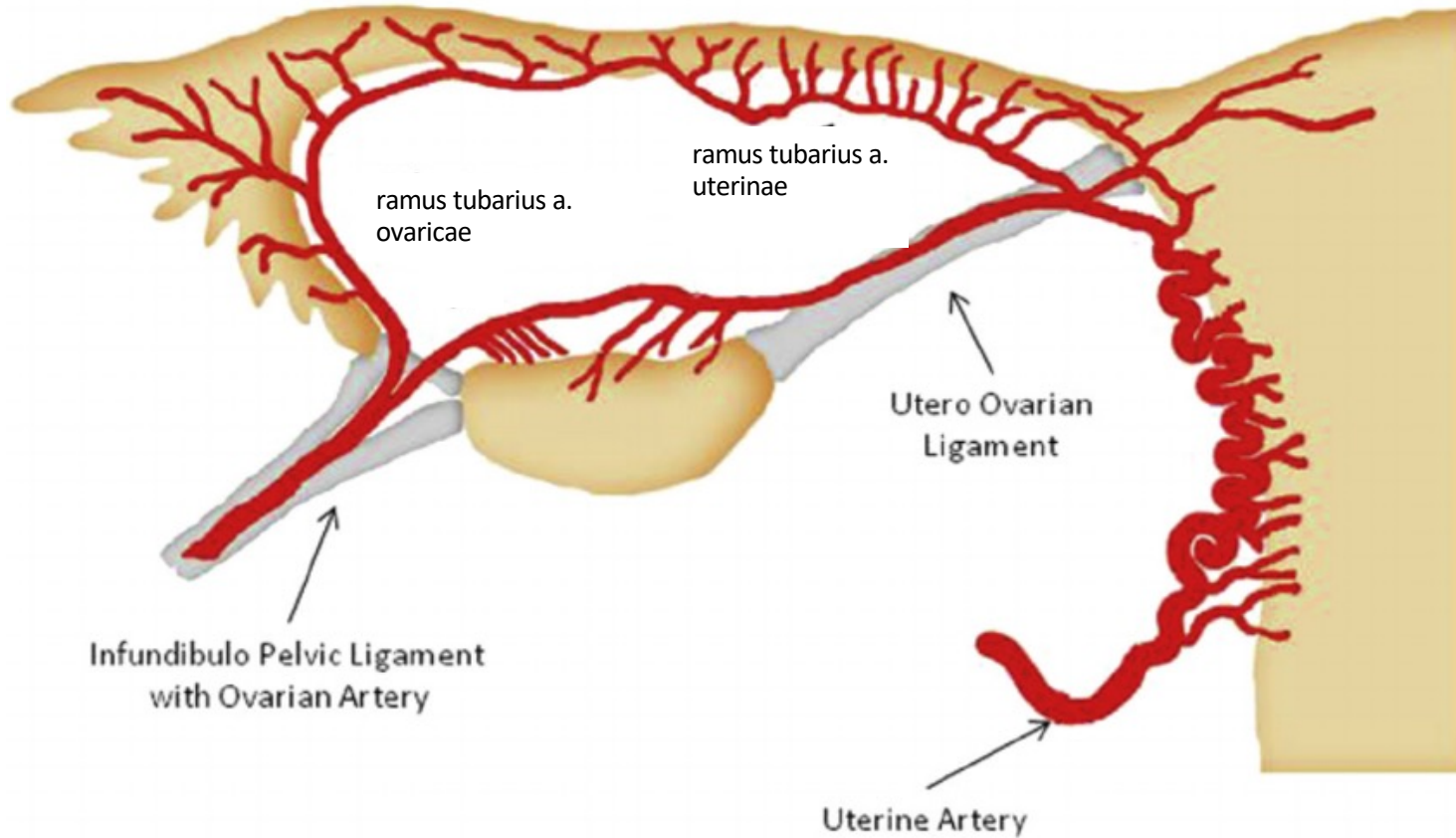
Isthmus – zužená část

Pars intramuralis (uterina)

Mesosalpinx



Cévní zásobení



Tepny:

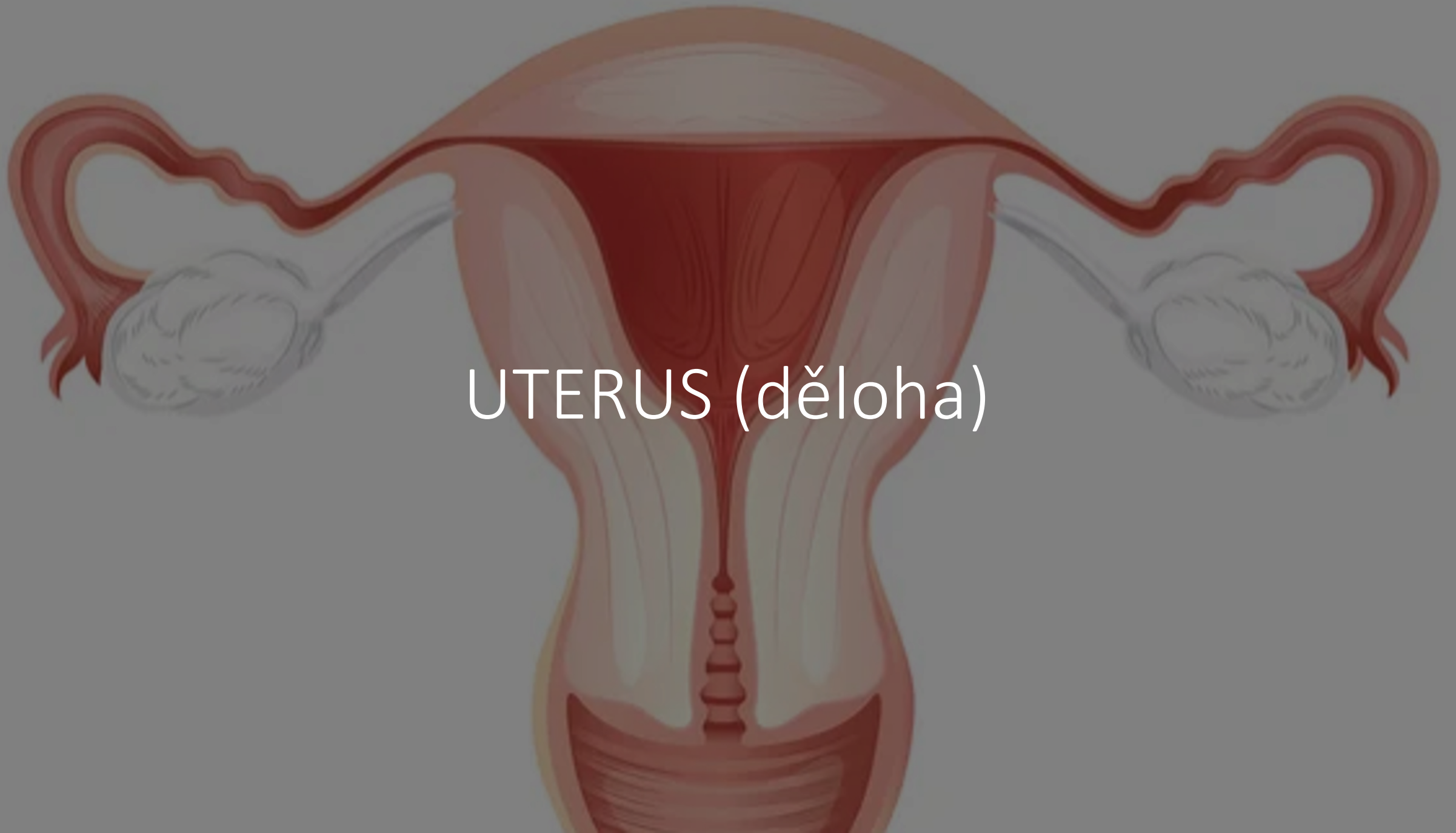
ramus tubarius a. ovaricae

ramus tubarius a. uterinae

Žíly:

Vena ovarica

Plexus venosus uterovaginalis



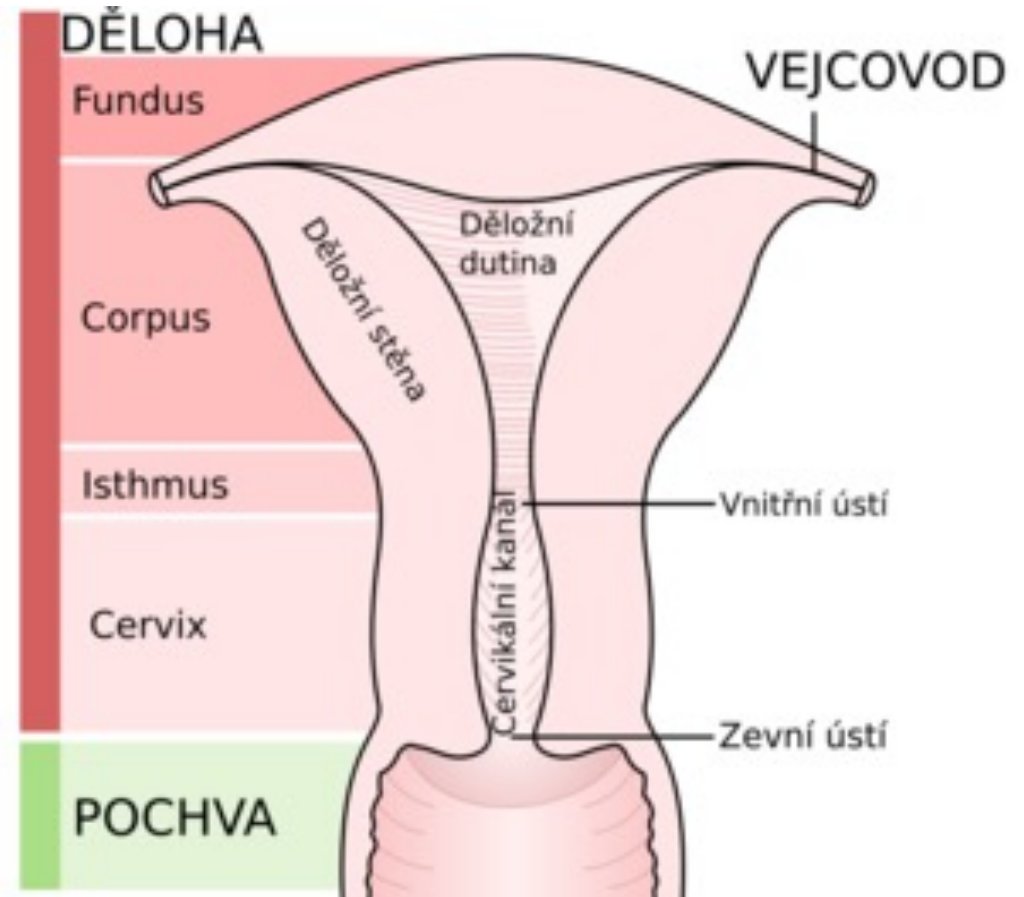
UTERUS (děloha)

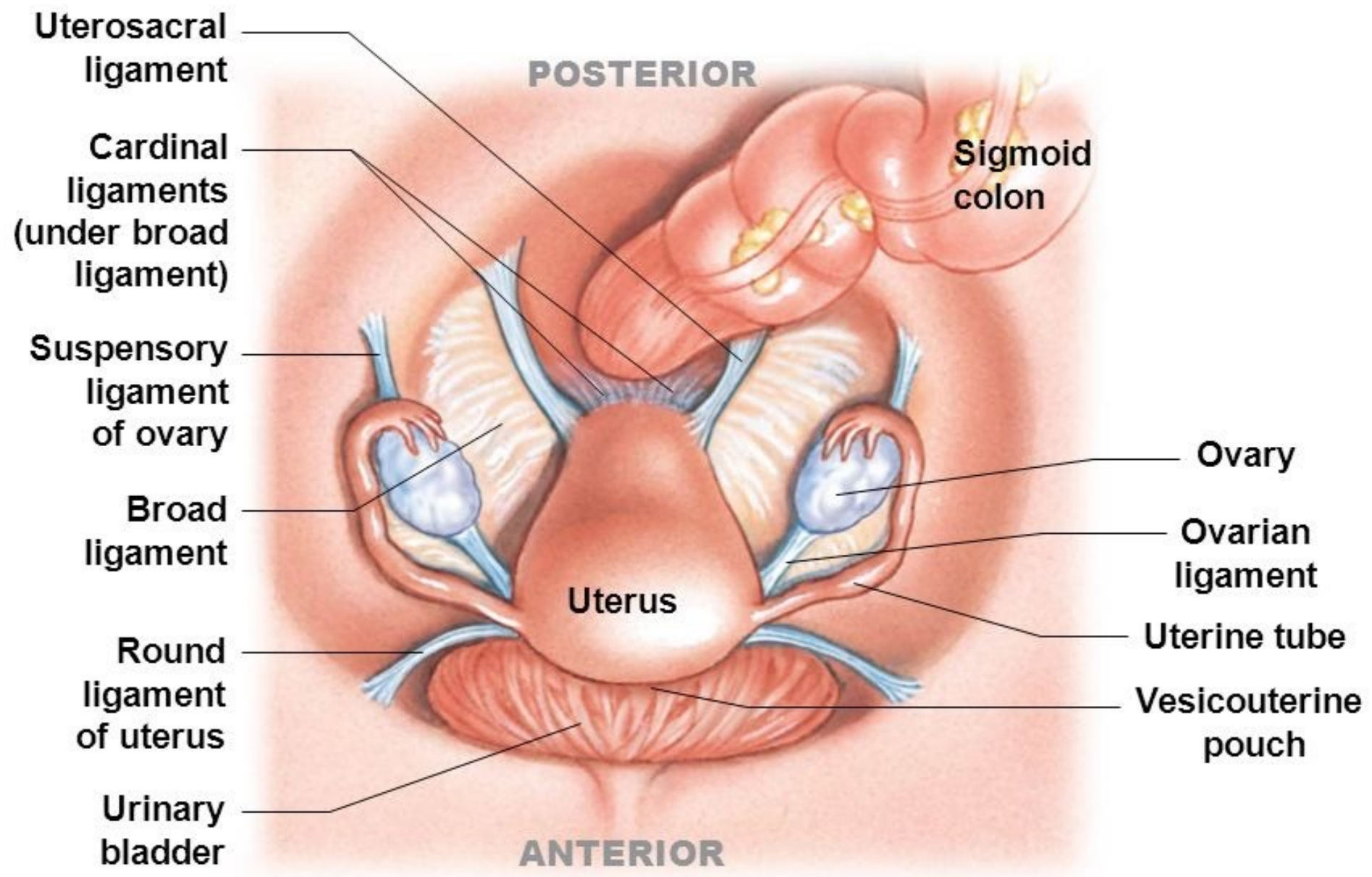
Uterus, hystera (děloha)

- Dutý svalový orgán

Přední a zadní stěna, hrany

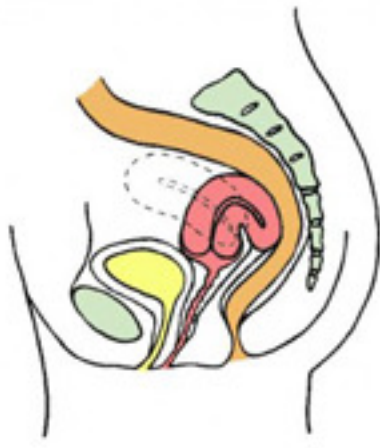
Rohy děložní



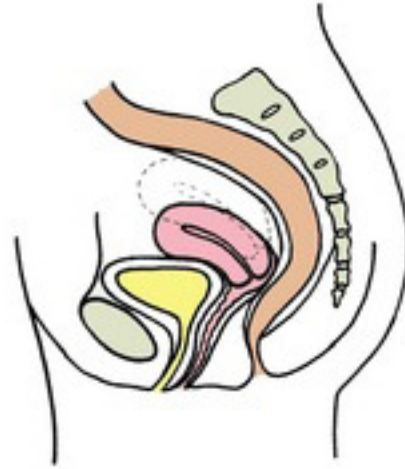




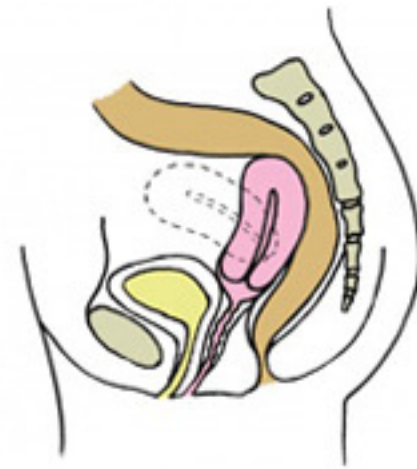
Anteflexe



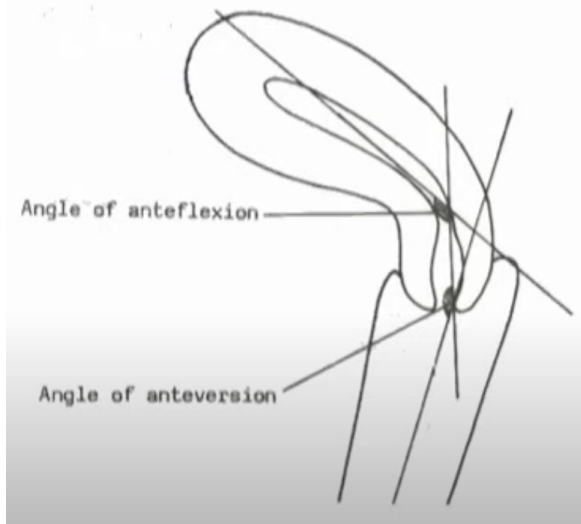
Retroflexe



Anteverze



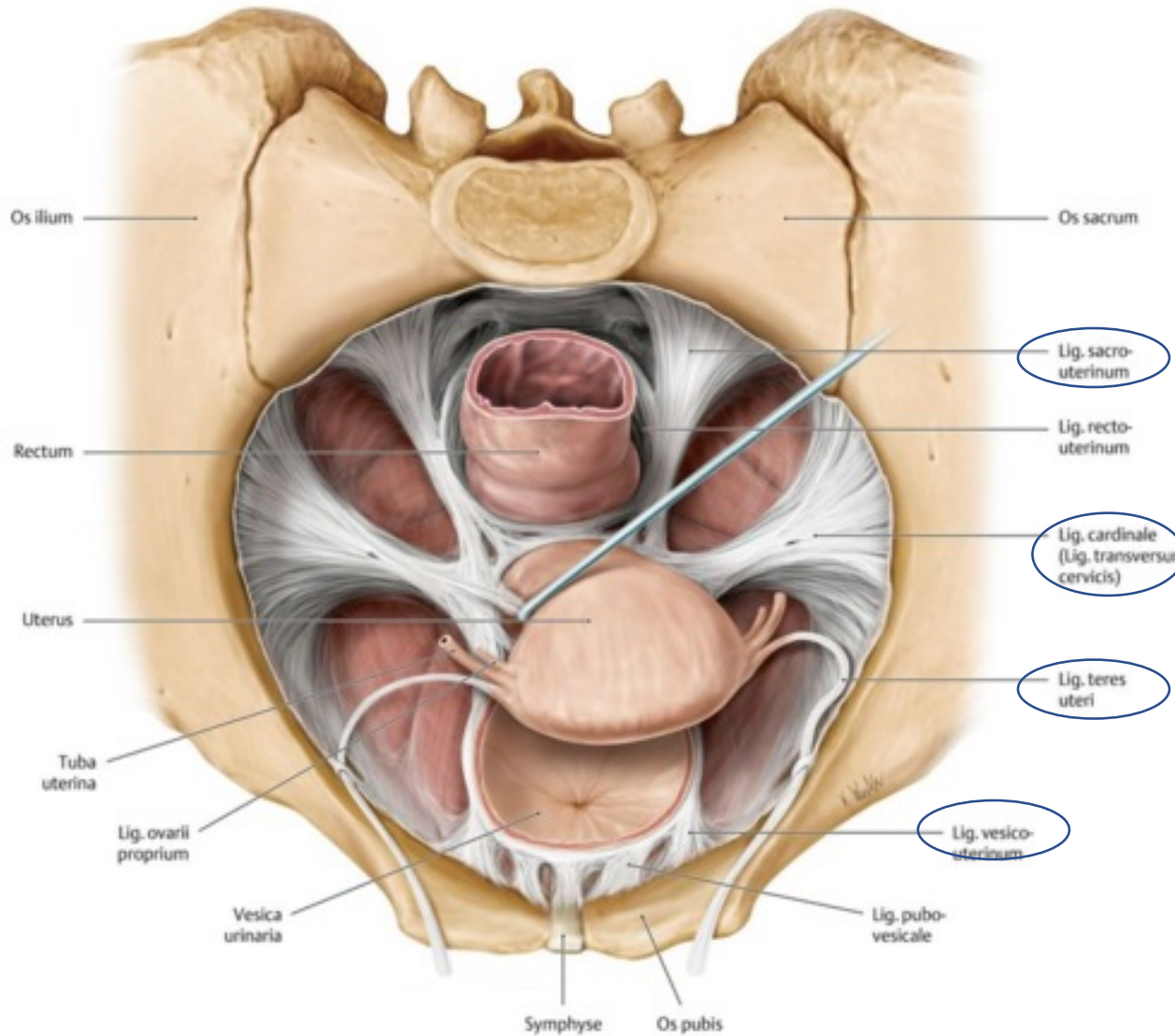
Retroverze



Podélná osa těla x osa hrdla

Podélná osa cervixu x osa pochvy

Závěsný aparát



Ligg. sacrouterina
Ligg. cardinalia uteri
Ligg. teretia uteri
Ligg. vesicouterina

Podpůrný aparát:
Diaphragma pelvis
Diaphragma urogenitale

Stavba stěny děložního těla

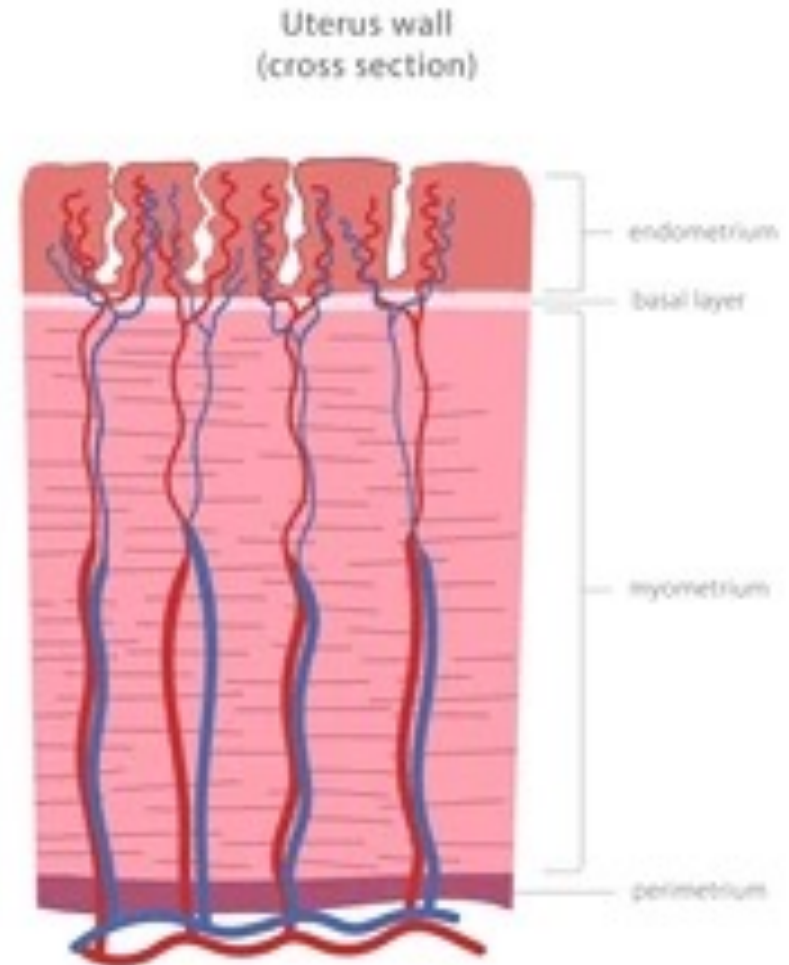
Endometrium

- Stratum basale
- Stratum functionale

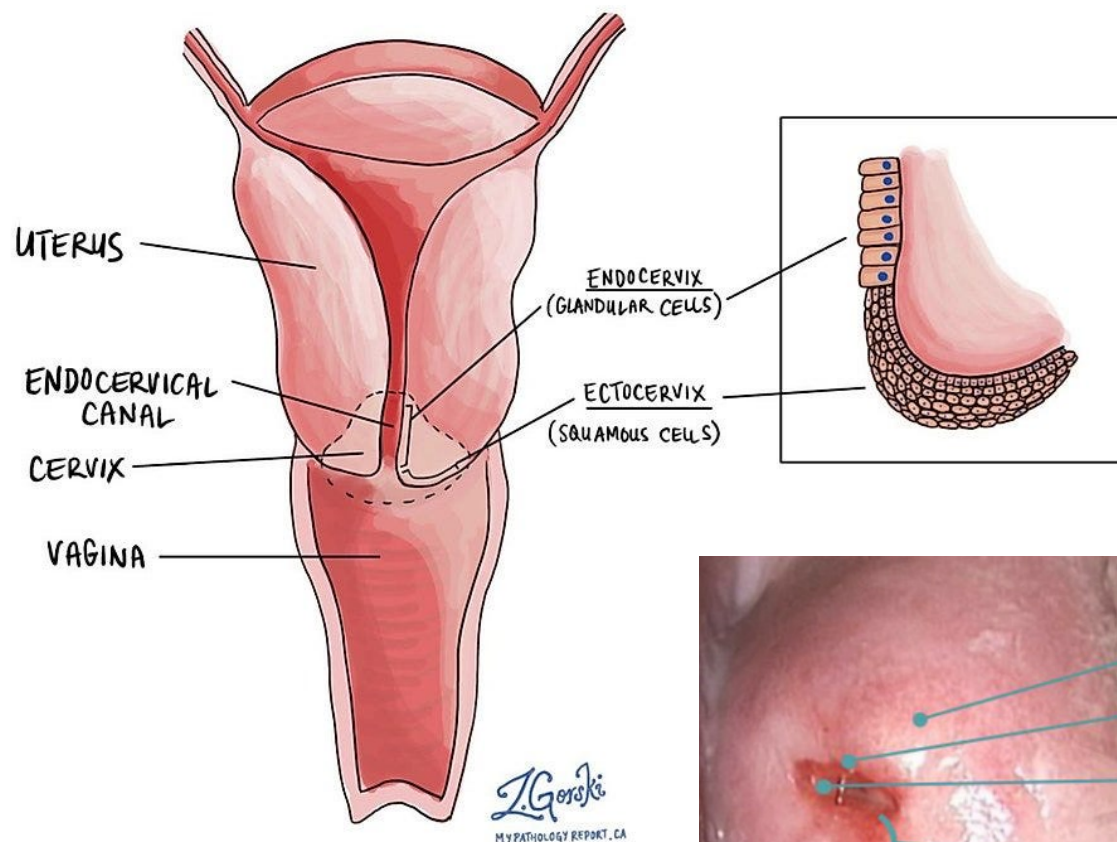
Myometrium – 4 vrstvy

- 2 vnitřní longit., cirk. (síť),
longit.

Perimetrium



Stavba děložního hrdla

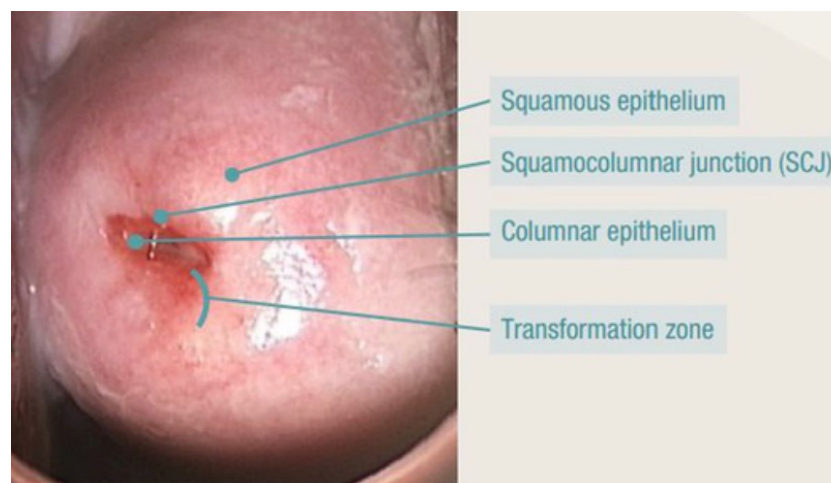


Vnitřní a zevní branka

Endocervix – cylindrické buňky

přechod = **transformační zóna**

Exocervix – dlaždicový vícevrstevnatý epitel



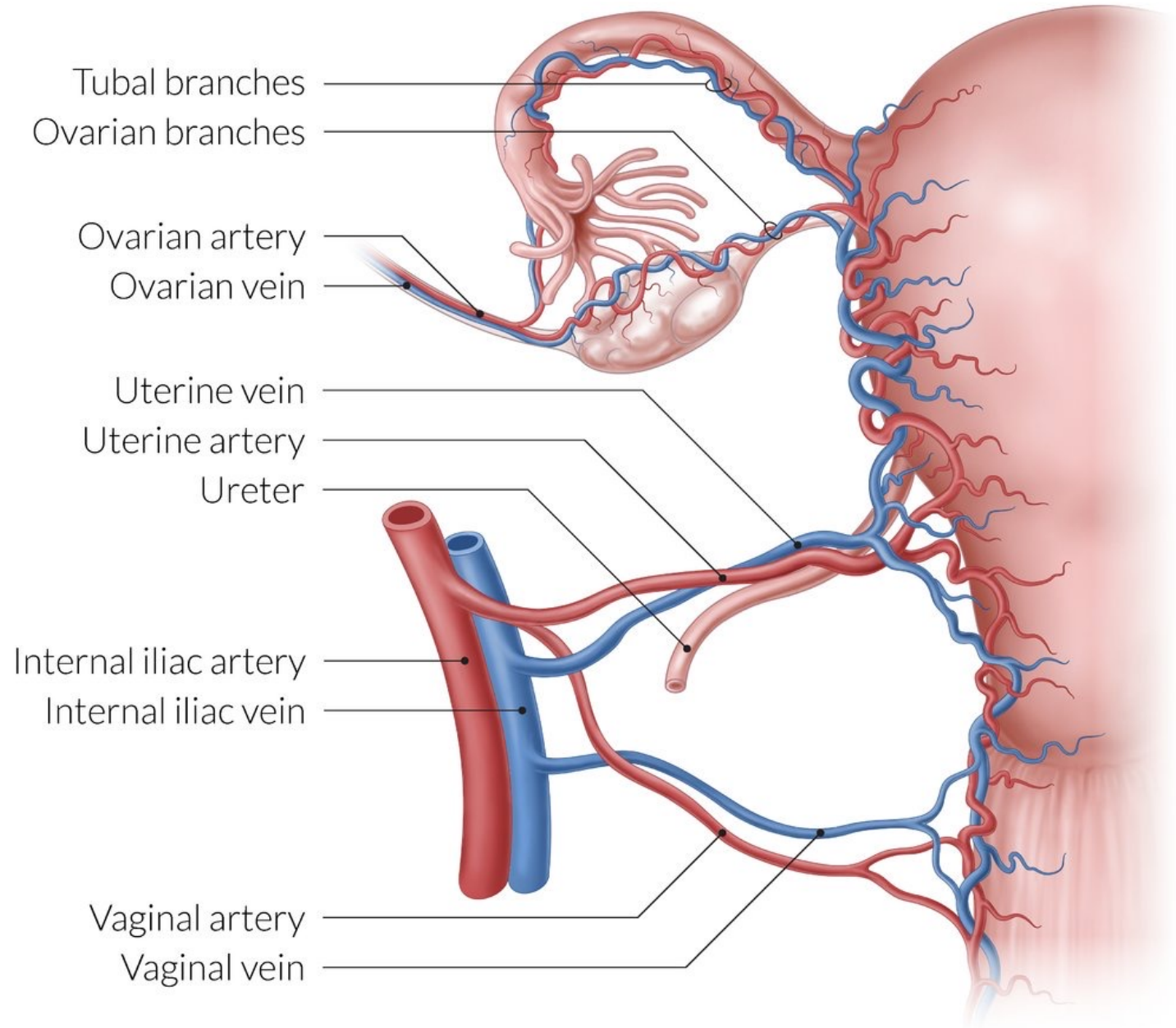
Cévní zásobení

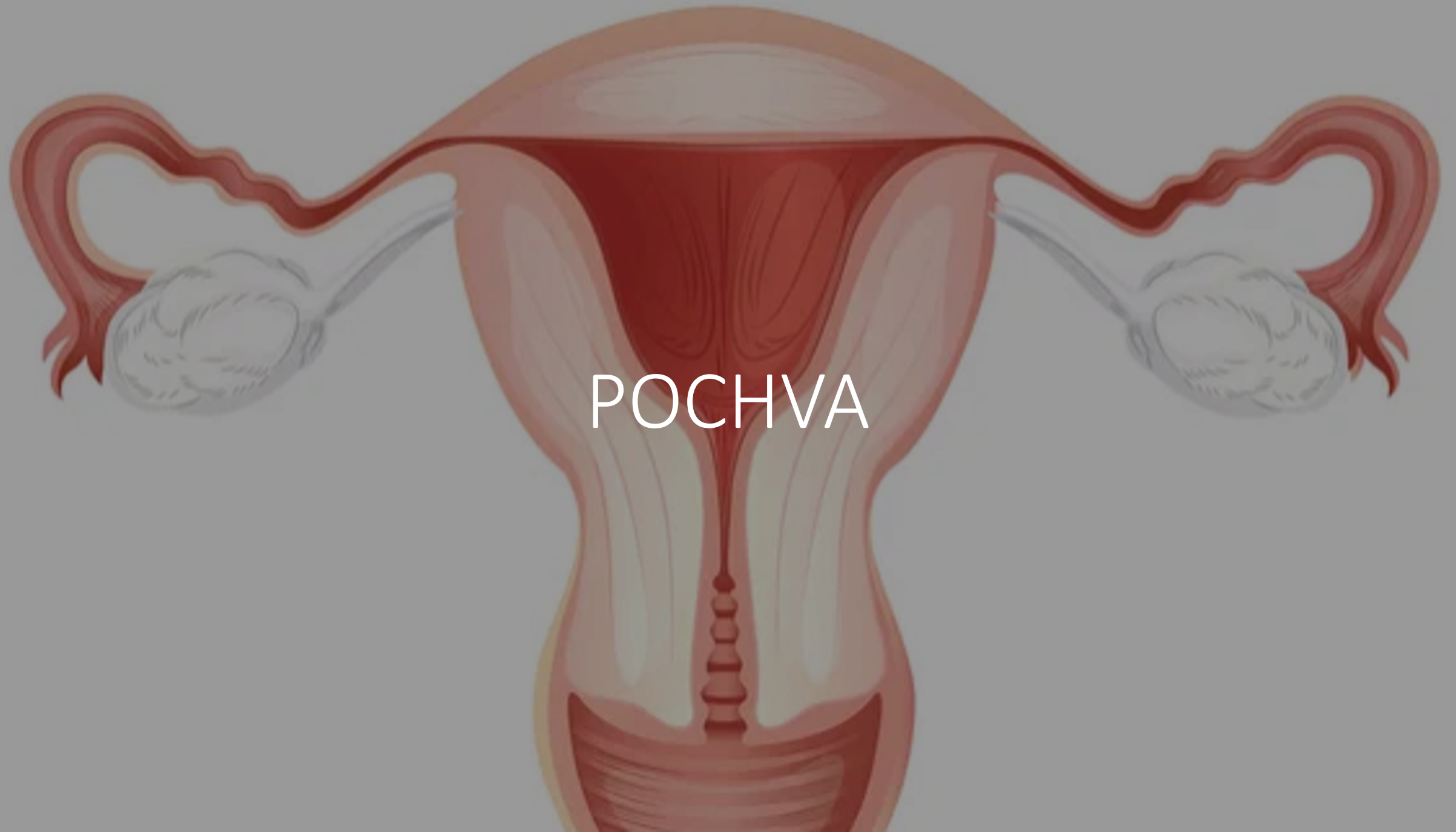
Arteria uterina

→ rr. uterini → aa. arcuatae

Plexus ureterovaginalis

→ vv. uterinae





POCHVA

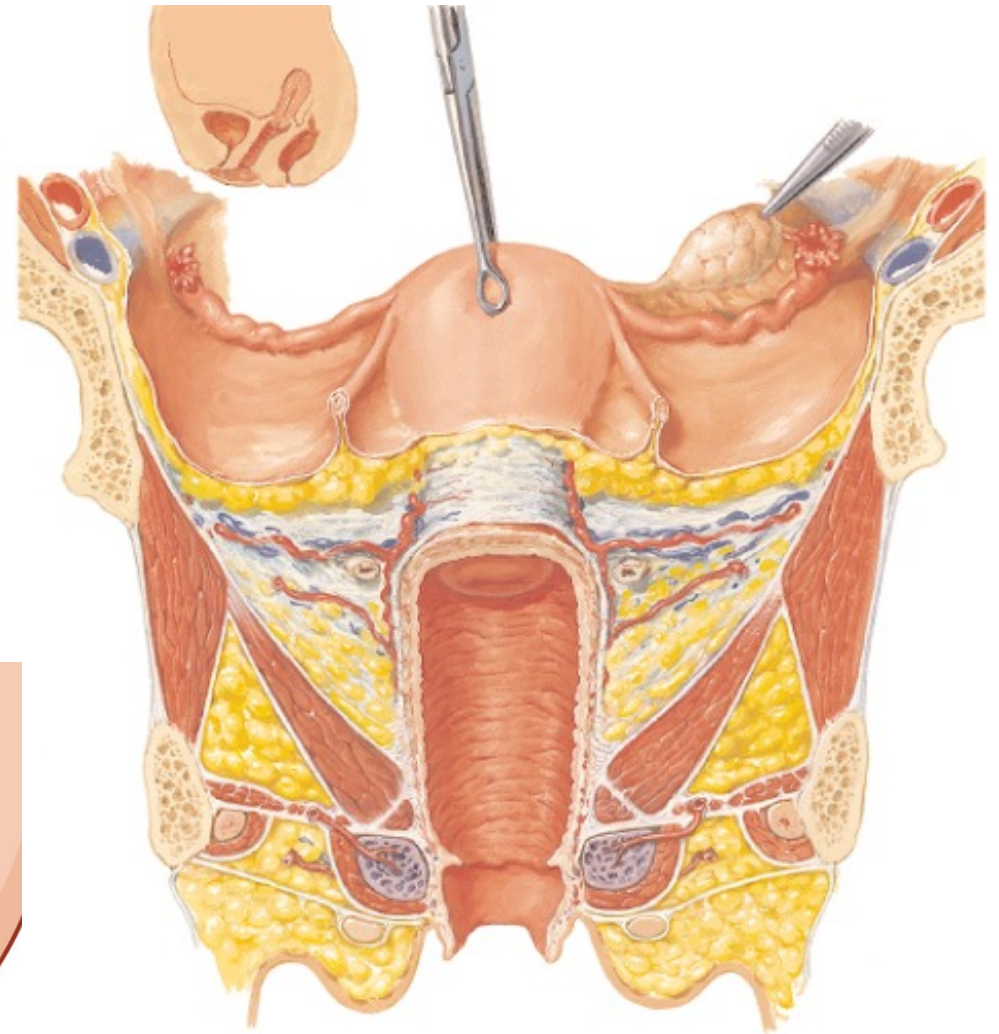
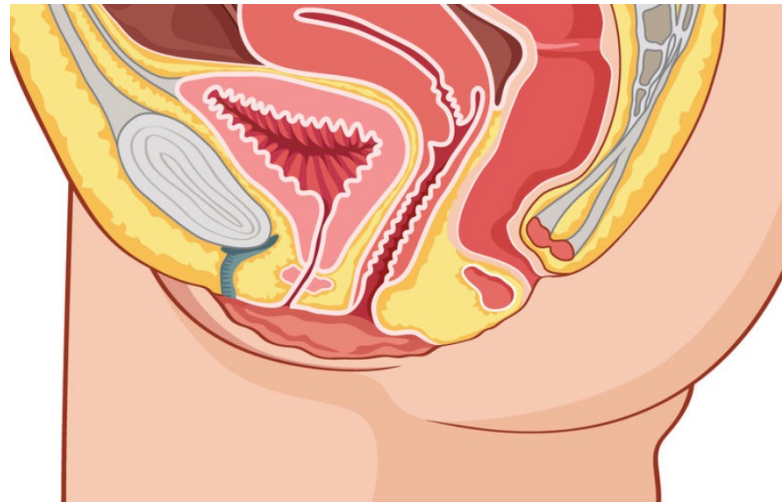
POCHVA, KOLPOS

- Předozadně oploštělá trubice
- Zadní stěna delší než přední
- Upíná se na hrdlo, kaudálně *ostium vaginae*
- Zadní, postranní a přední klenby

Funkce:

Odvodná

Kopulační



Stavba

Sliznice – složena do řas

- Dlaždicový epitel
- Struktura se mění s cyklem
- Obsahuje četné žlázy

Hladká svalovina

Vazivo, parakolpium



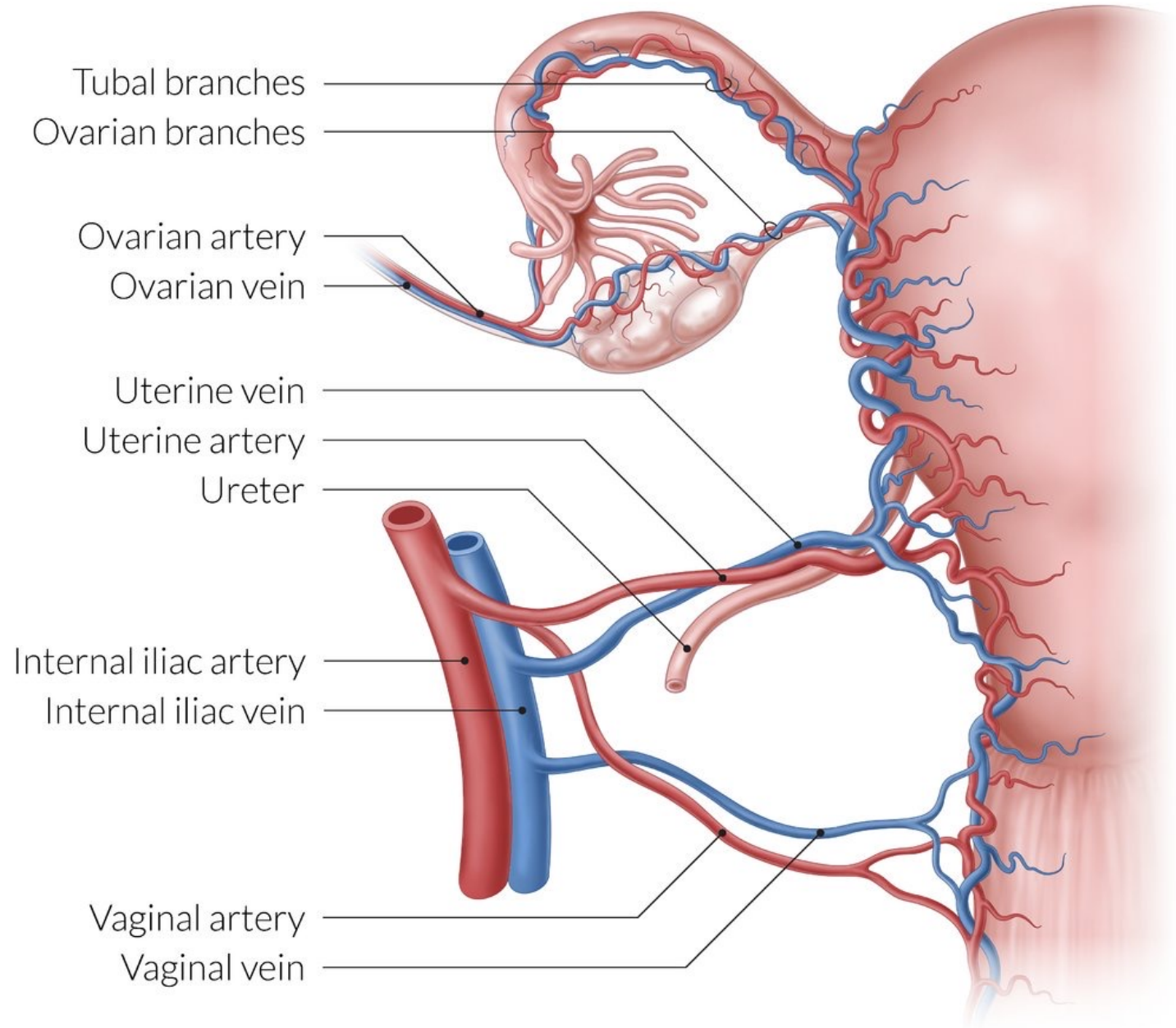
Cévní zásobení

Arteria vaginalis

Rami vaginales z a. rectalis media

Větve a. pudenda interni

Plexus uterovaginalis



An anatomical illustration of the female vulva, rendered in a soft, reddish-pink color. The image shows the labia majora (outer lips) and the labia minora (inner lips) surrounding the vaginal opening. The word "VULVA" is written in a clean, white, sans-serif font, centered over the vulva. The background is dark, making the anatomical drawing stand out.

VULVA

VULVA (*zevní rodidla*)

Mons pubis (hrma)

Labia majora

Labia minora

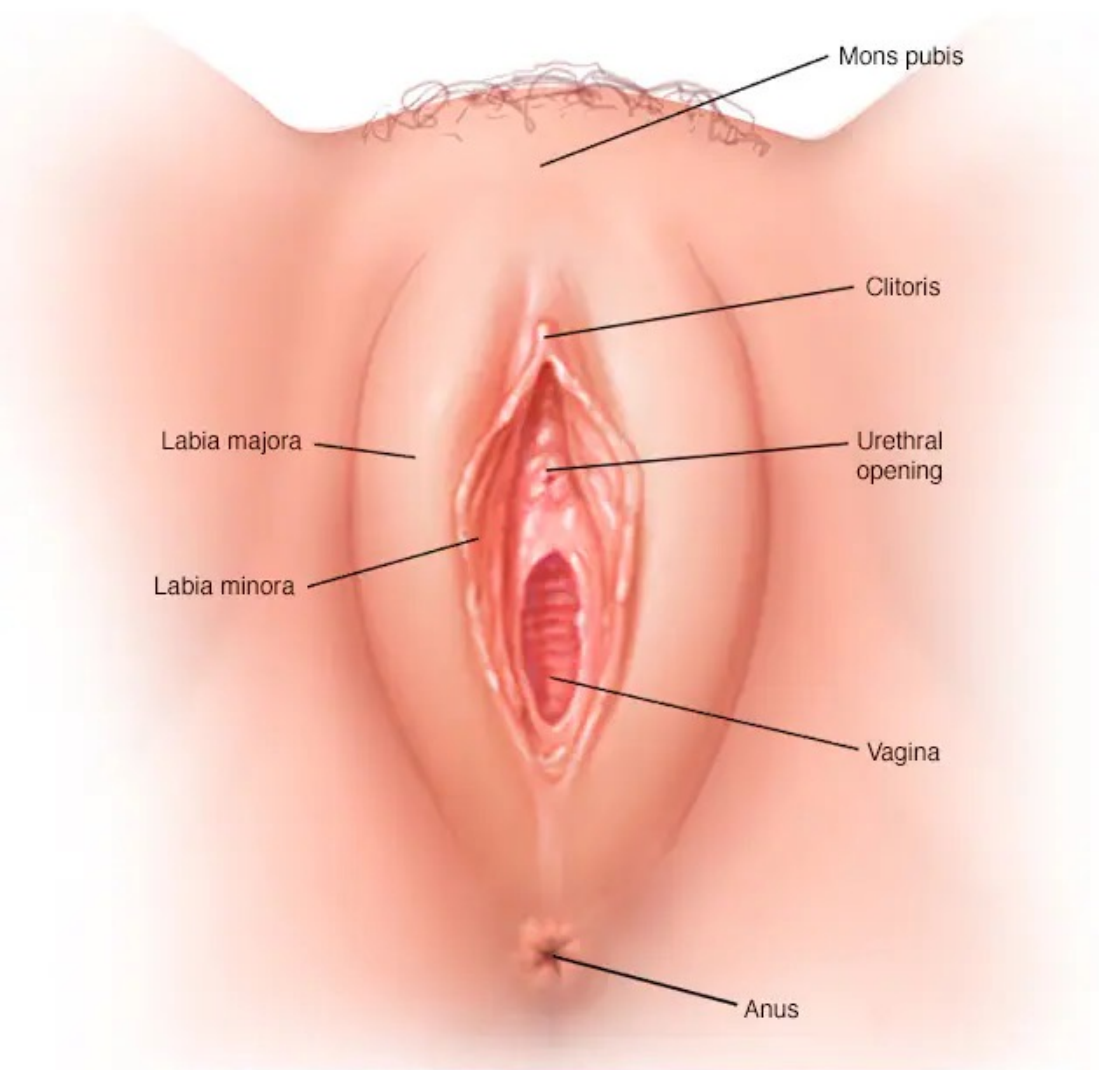
Vestibulum vaginae

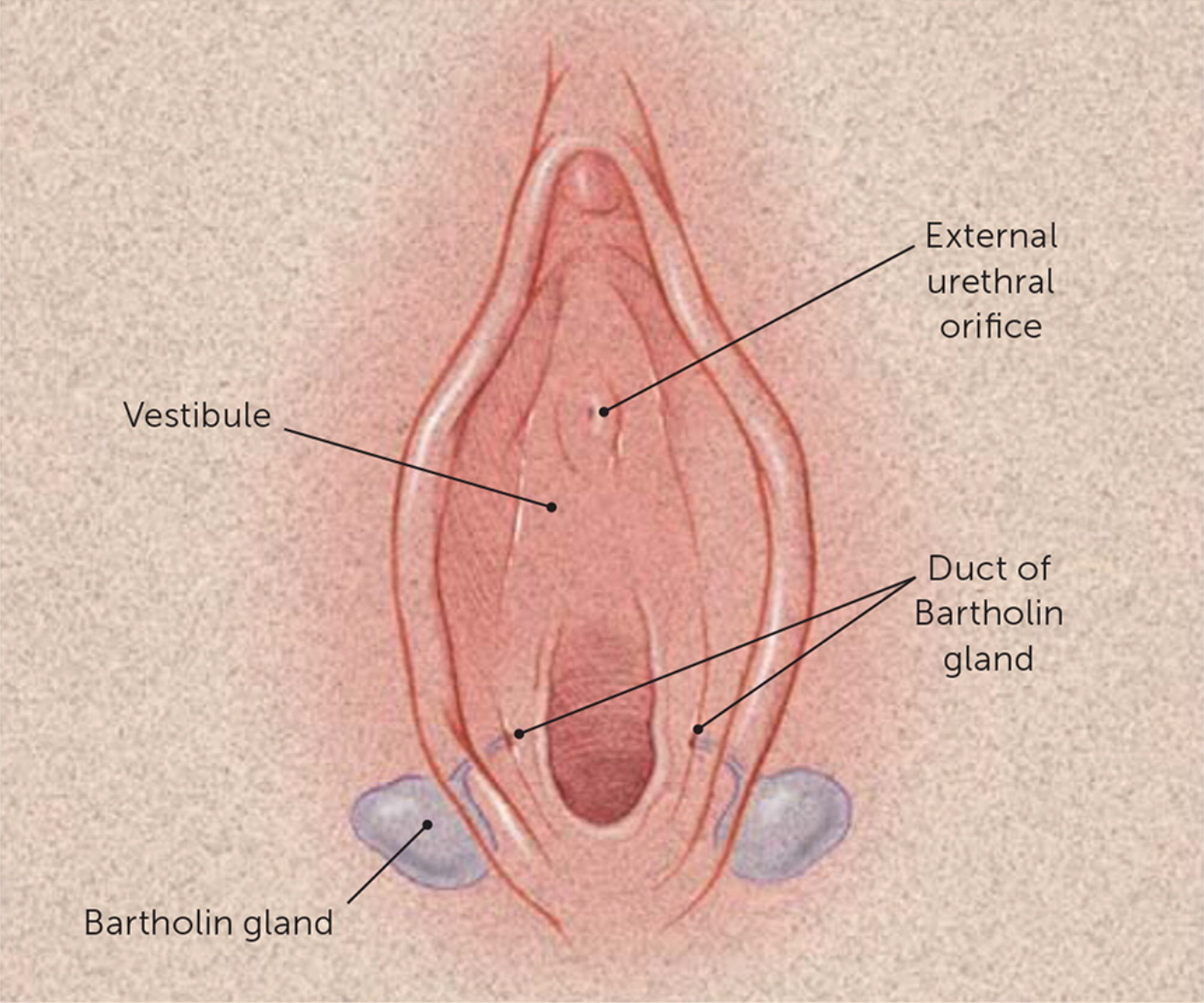
Hymen

Clitoris

Bartoliniho žláza

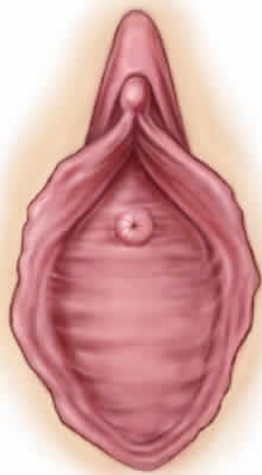
Perineum



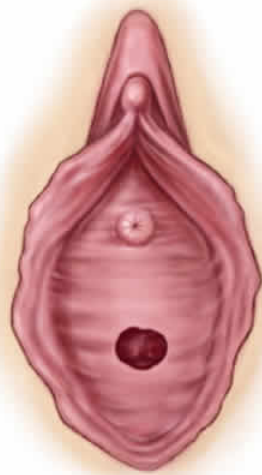


Hymen

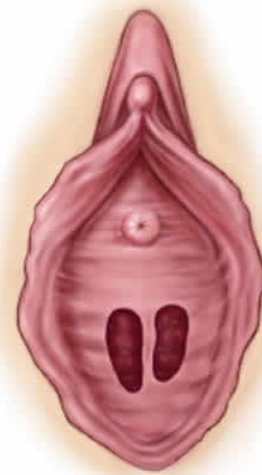
Imperforate hymen



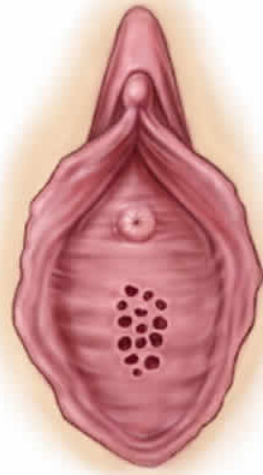
Annular hymen



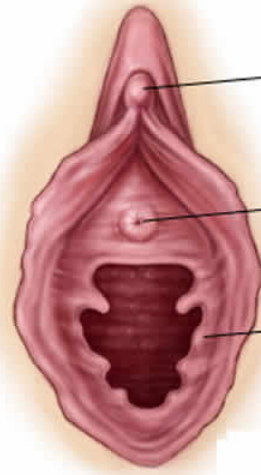
Septate hymen



Cribiform hymen



Parous introitus hymen



Clitoris

Urethral opening

Hymen

