

An anatomical illustration of the human pelvis and lower spine, viewed from the front. The illustration shows the lumbar and sacral vertebrae at the top, the iliac crest, the pubis, and the ischium. The femoral heads are visible at the bottom. The text is overlaid on the central part of the pelvis.

Anatomie pánve

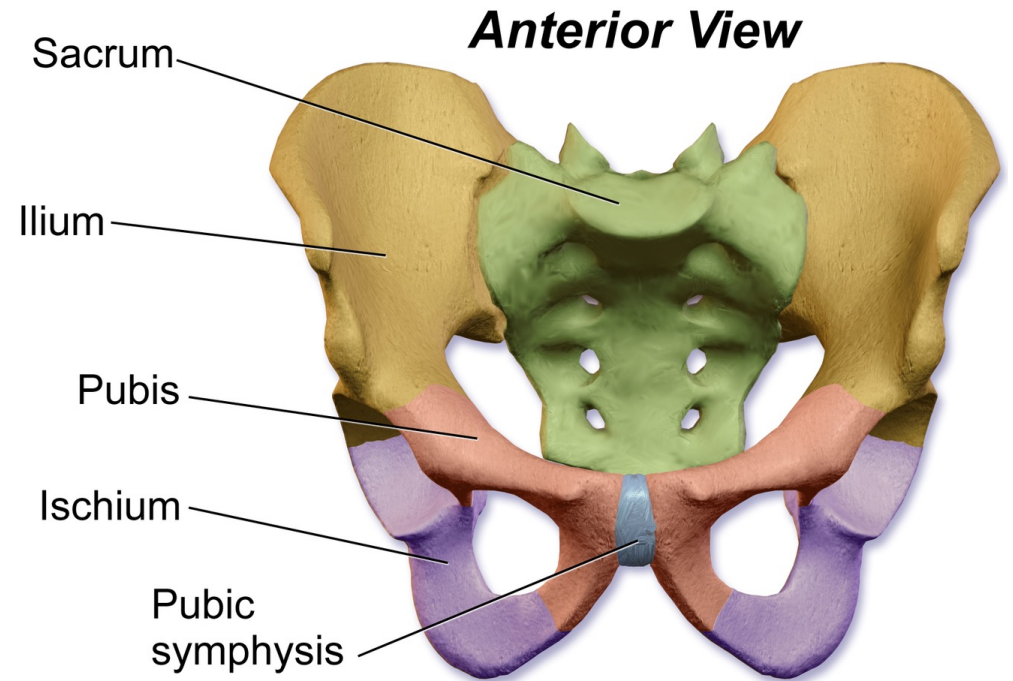
Lenka Krobová

Pelvis

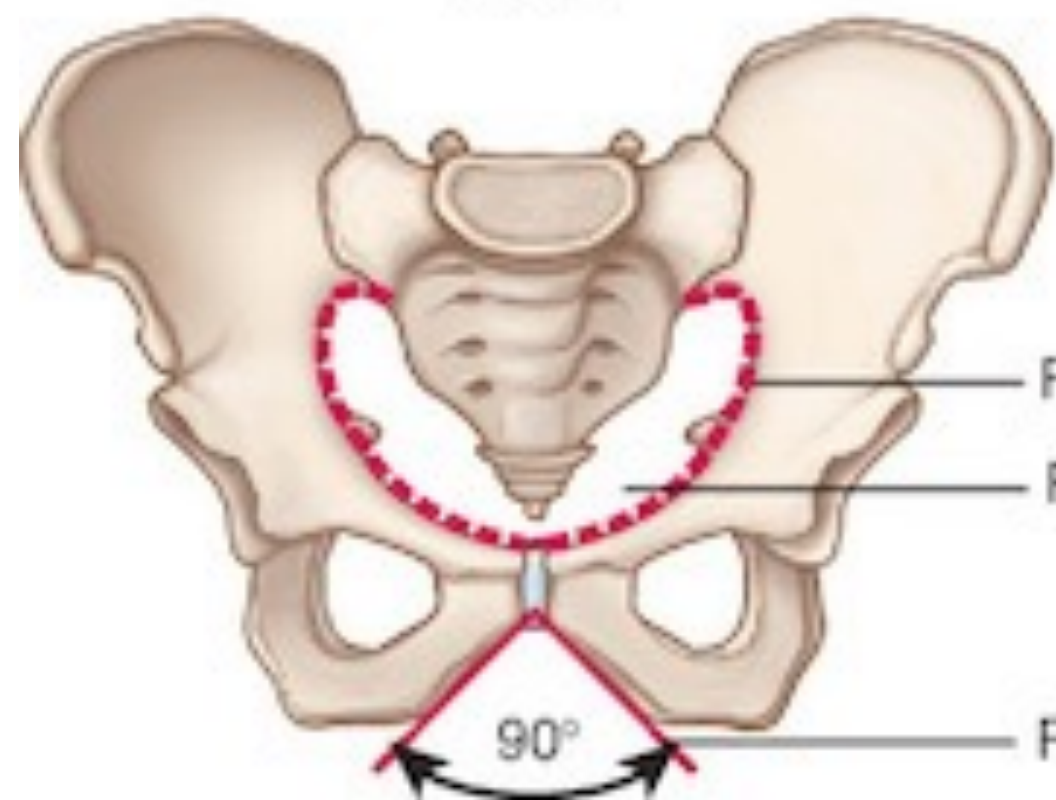
Dvě kosti pánevní + kost křížová

Pánevní kost:

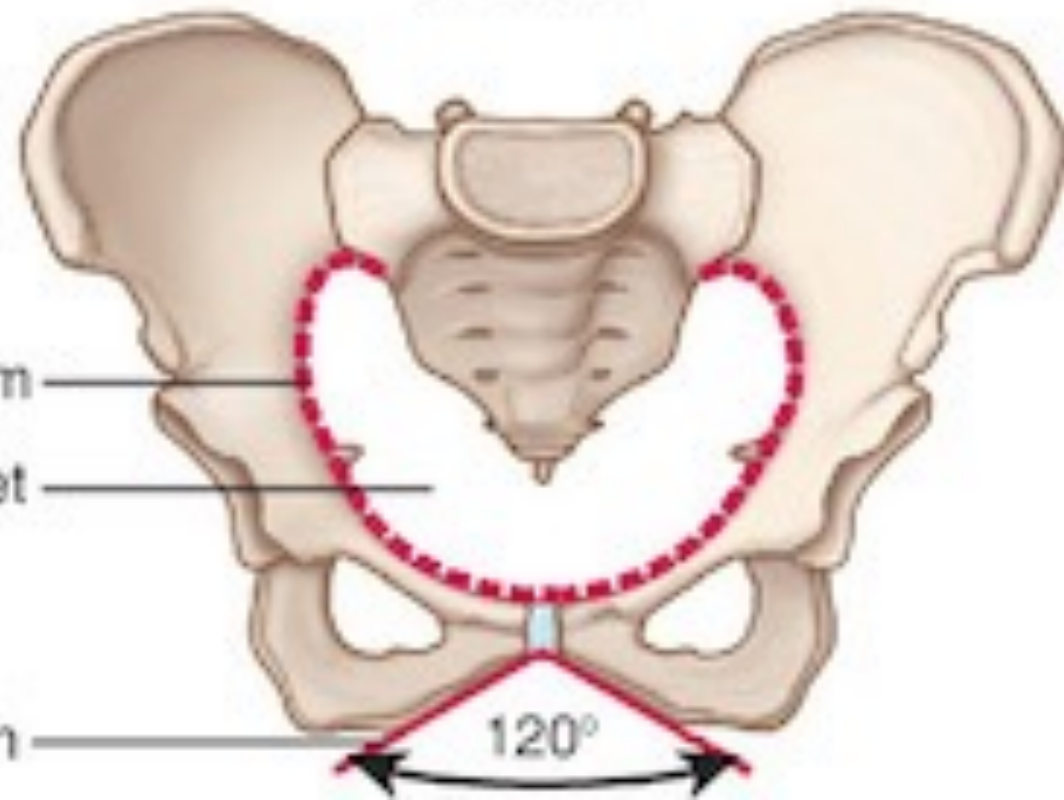
- Os ilium
- Os pubis
- Os ischium



Male



Female



Pelvic brim

Pelvic inlet

Pubic arch

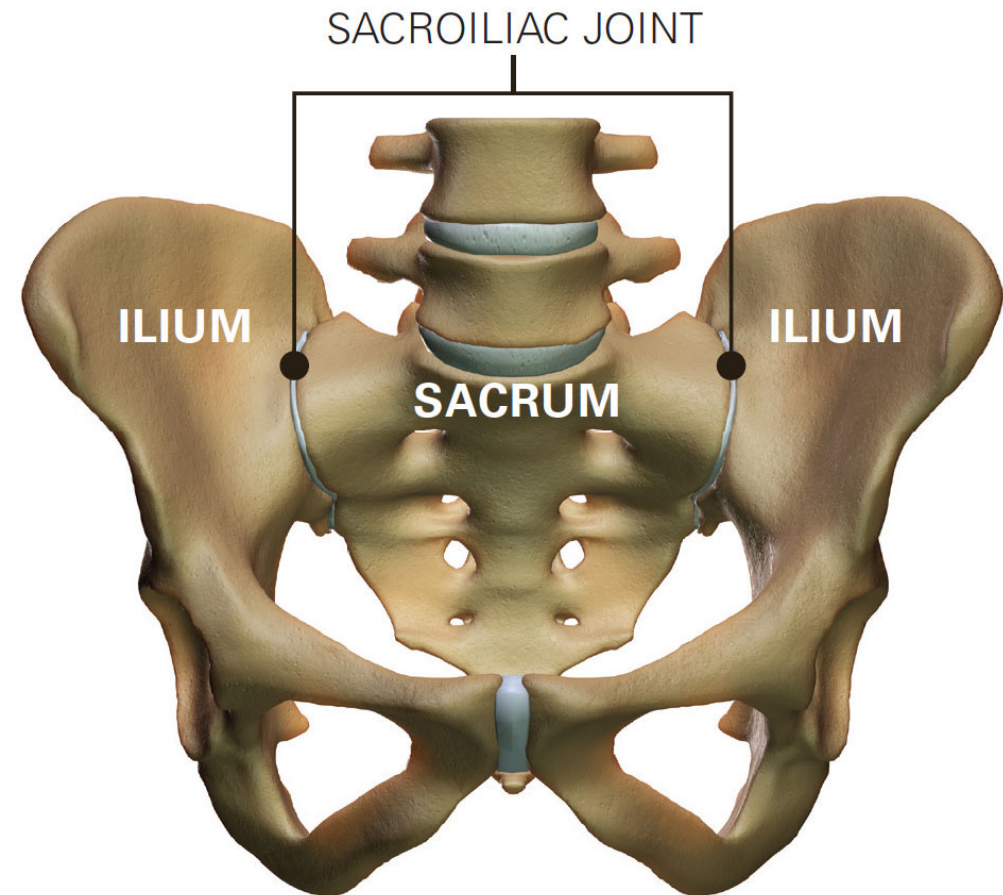
90°

120°

Klouby pánve

Sakroiliální kloub

Symphysis pubica



Členění pánve

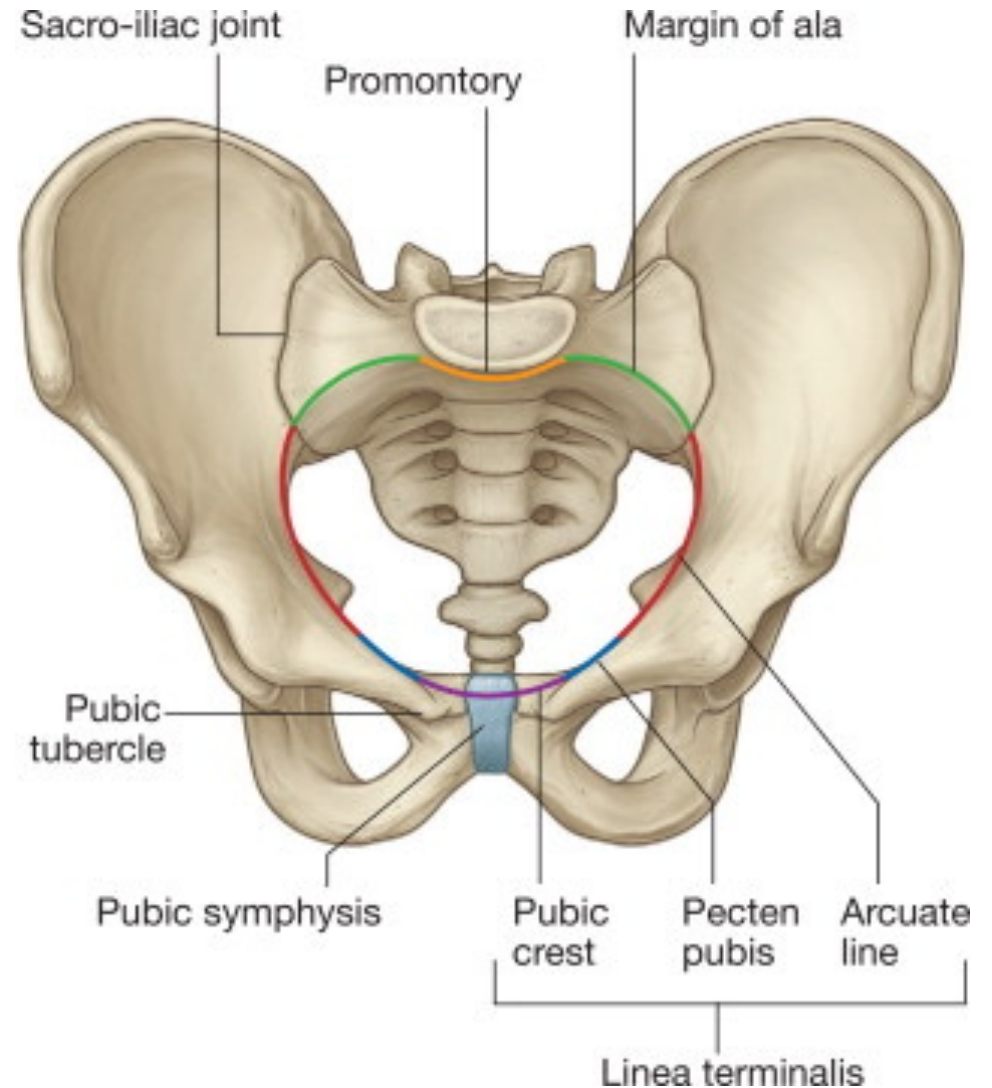
Pelvis major

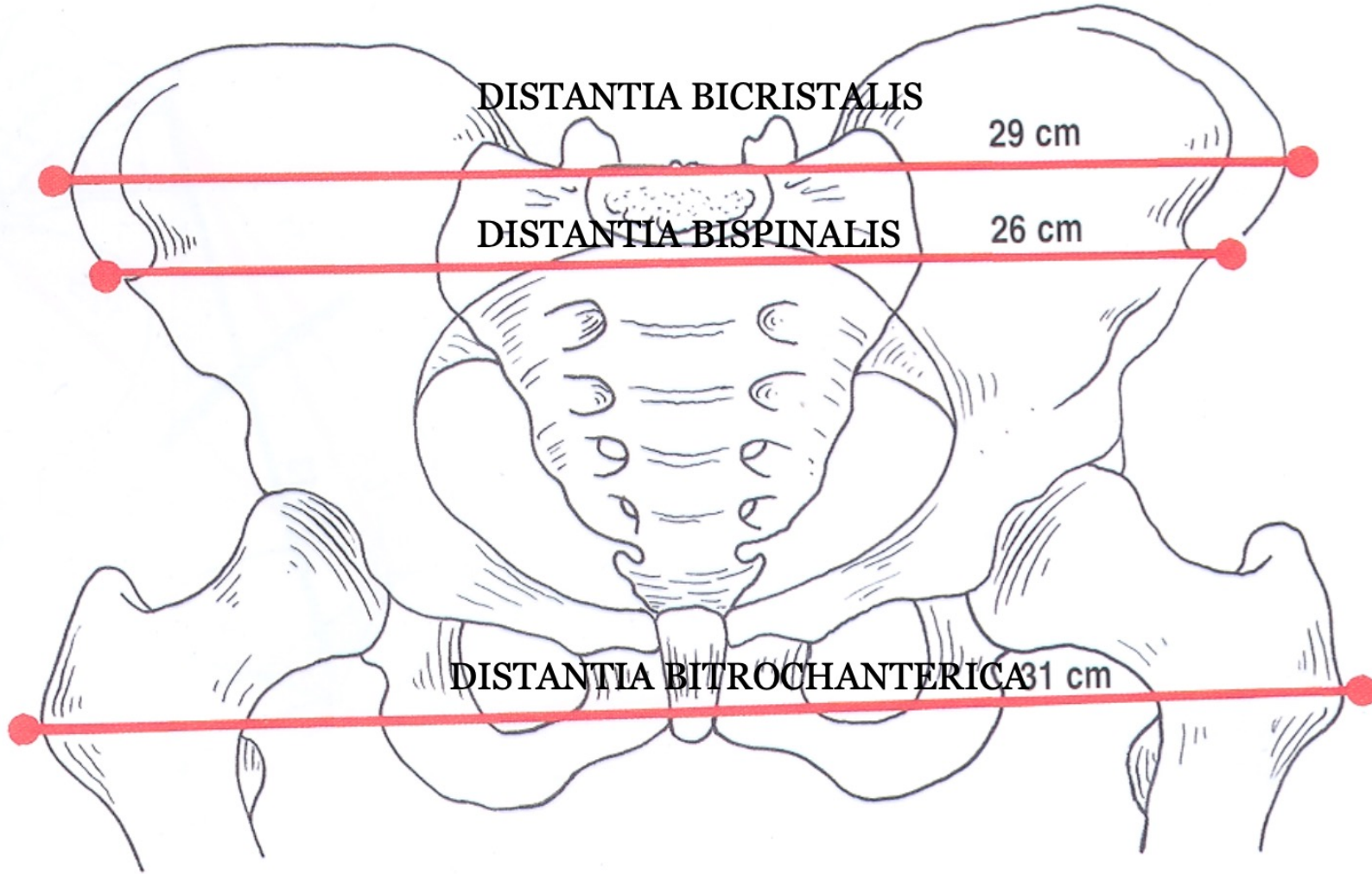
- Spodina dutiny břišní

Linea terminalis

Pelvis minor

- Pánevní dutina





DISTANTIA BICRISTALIS

29 cm

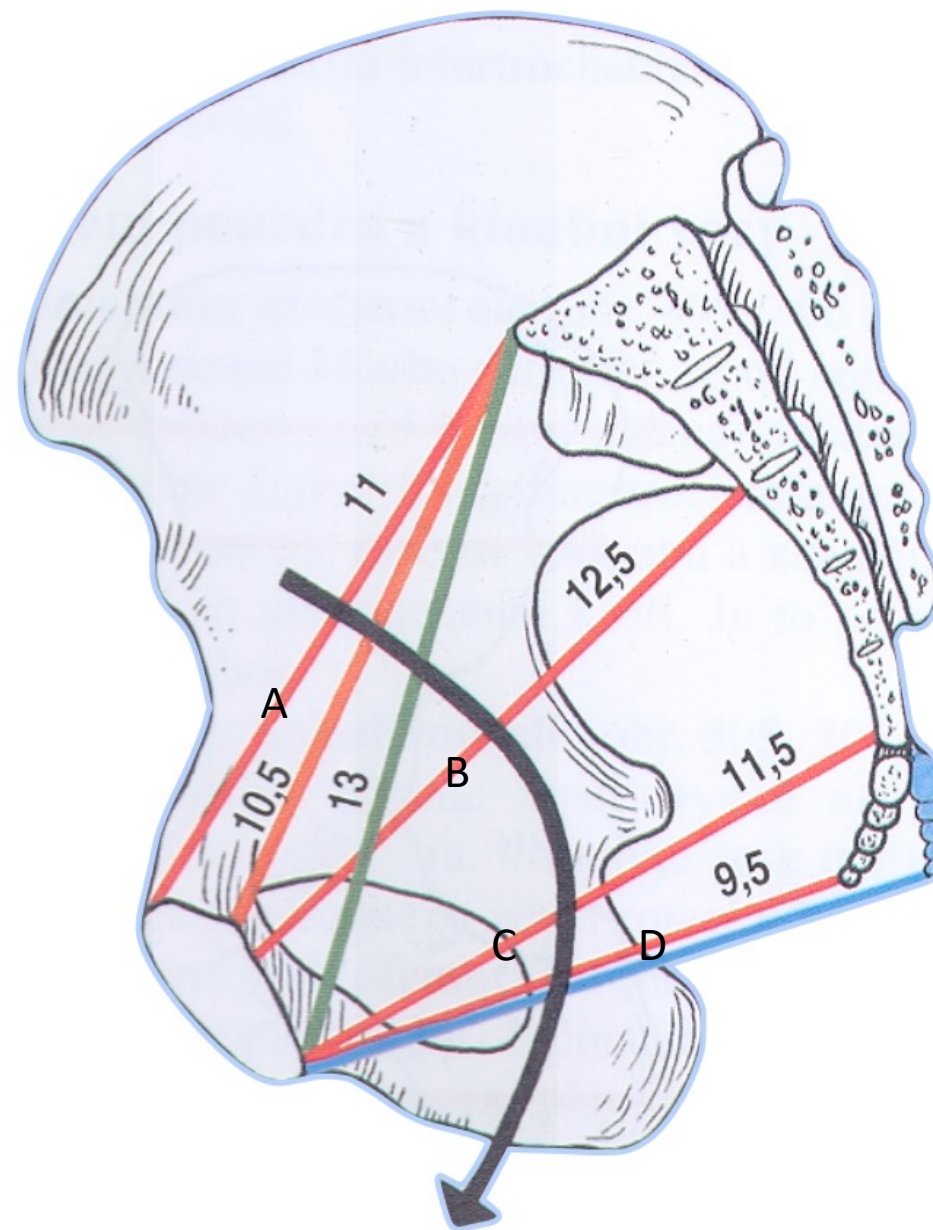
DISTANTIA BISPINALIS

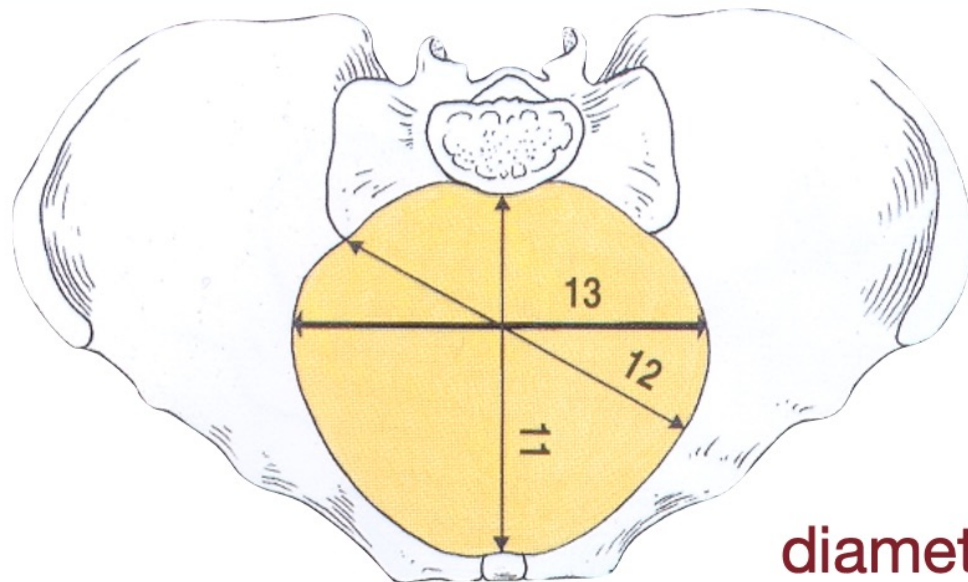
26 cm

DISTANTIA BITROCHANTERICA 31 cm

Roviny pánevní

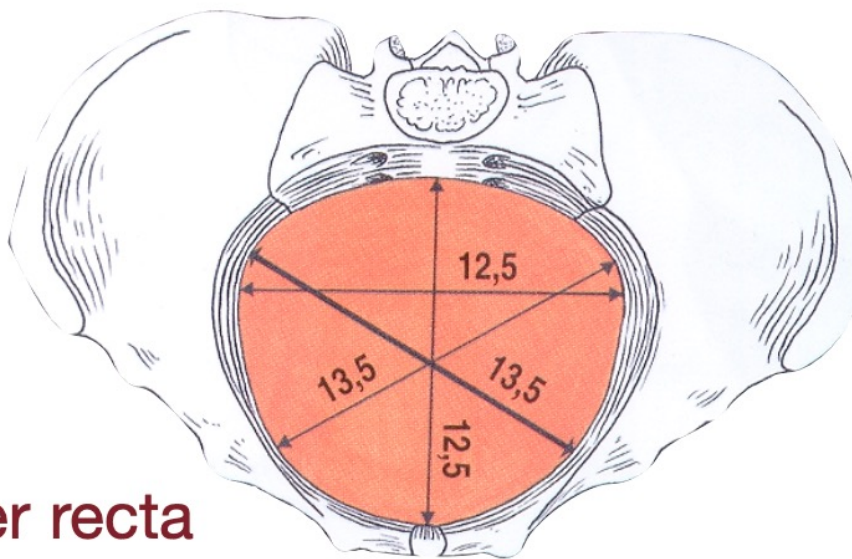
- A. Aditus (vchod)
- B. Amplitudo (šíře)
- C. Angustio (úžina)
- D. Exitus (východ)



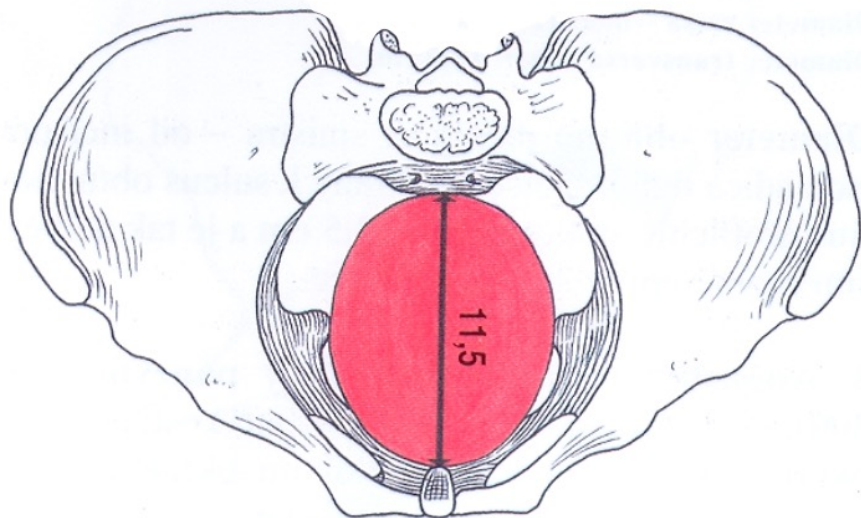


ADITUS - VCHOD

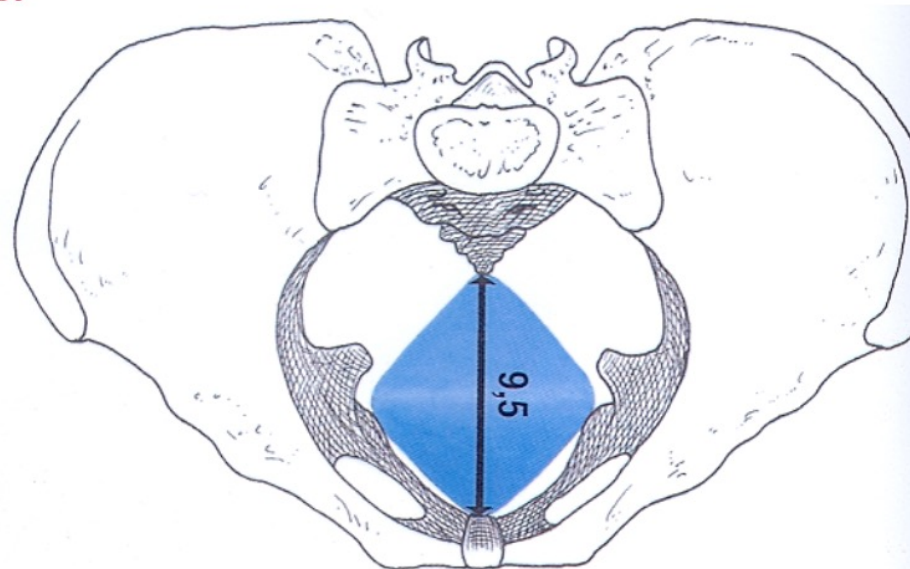
diameter recta
transversa
obliqua



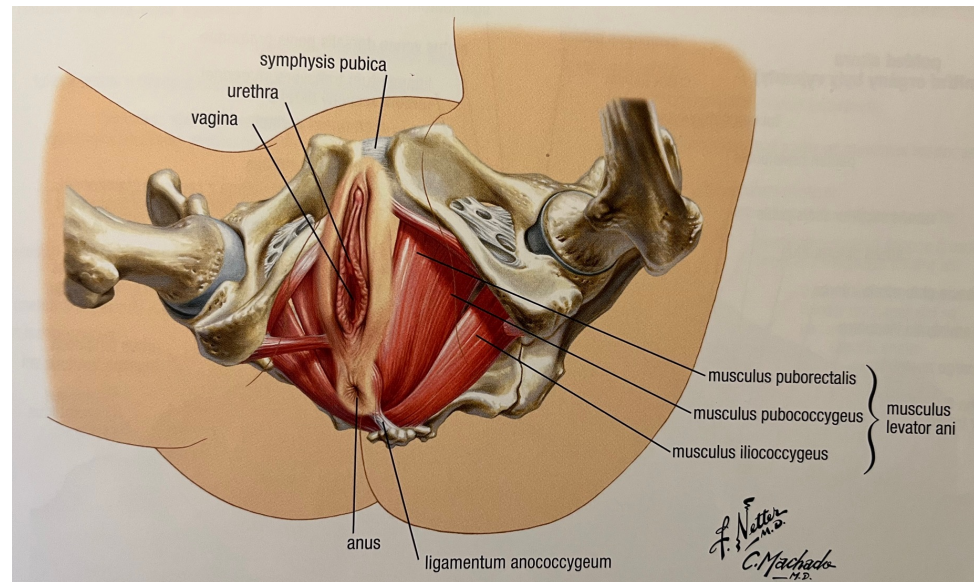
AMPLITUDO - ŠÍŘE



ANGUSTIA - ÚŽINA

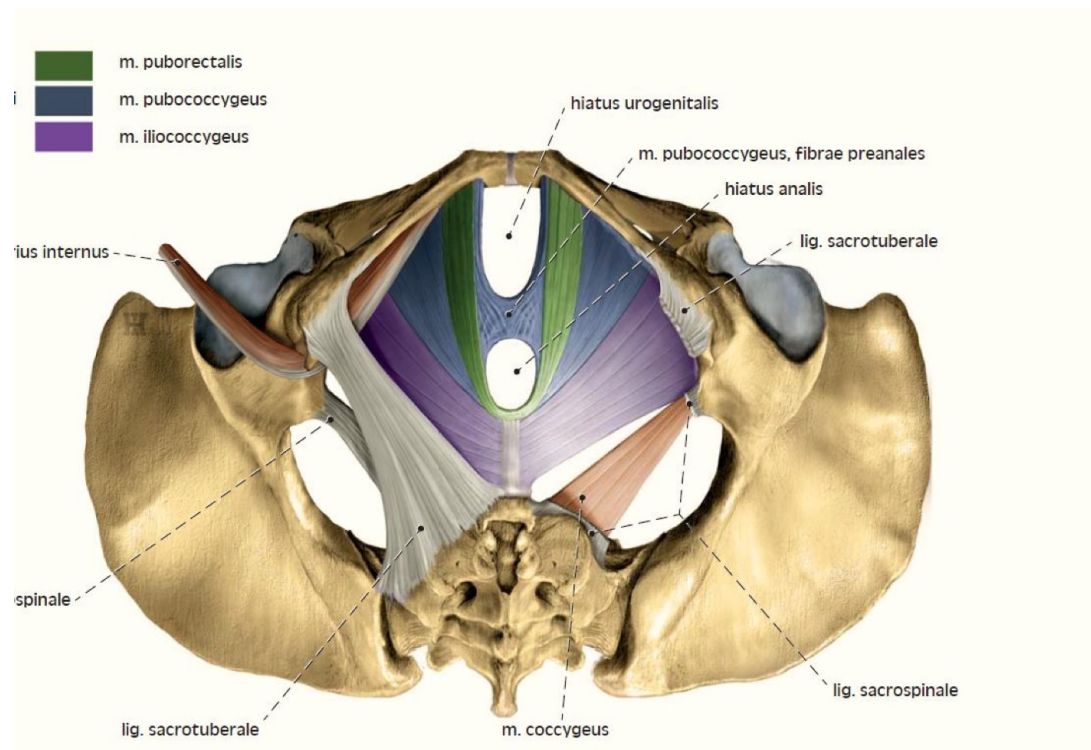
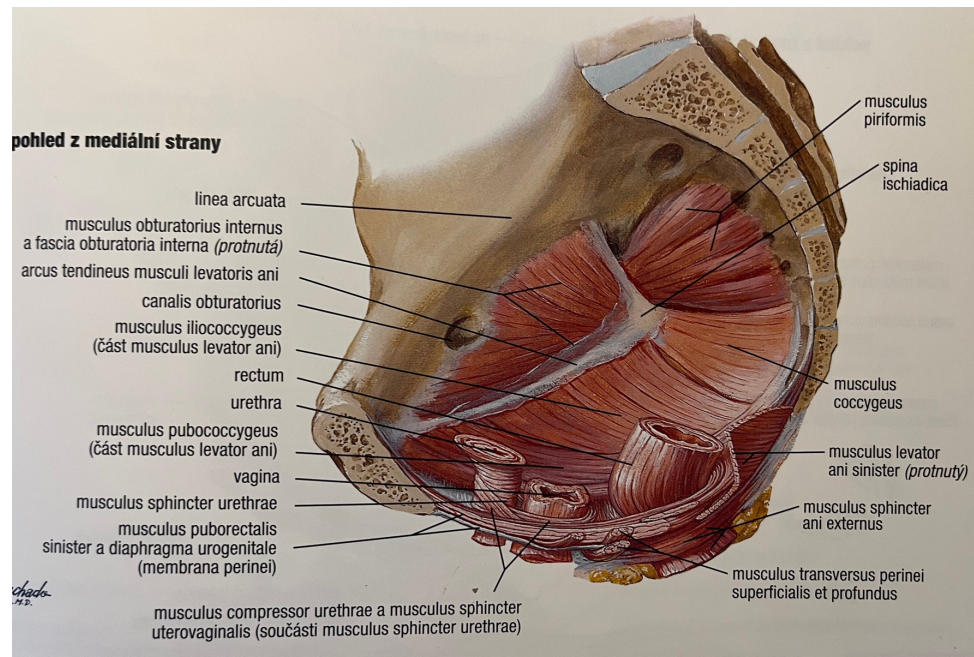


EXITUS - VÝCHOD



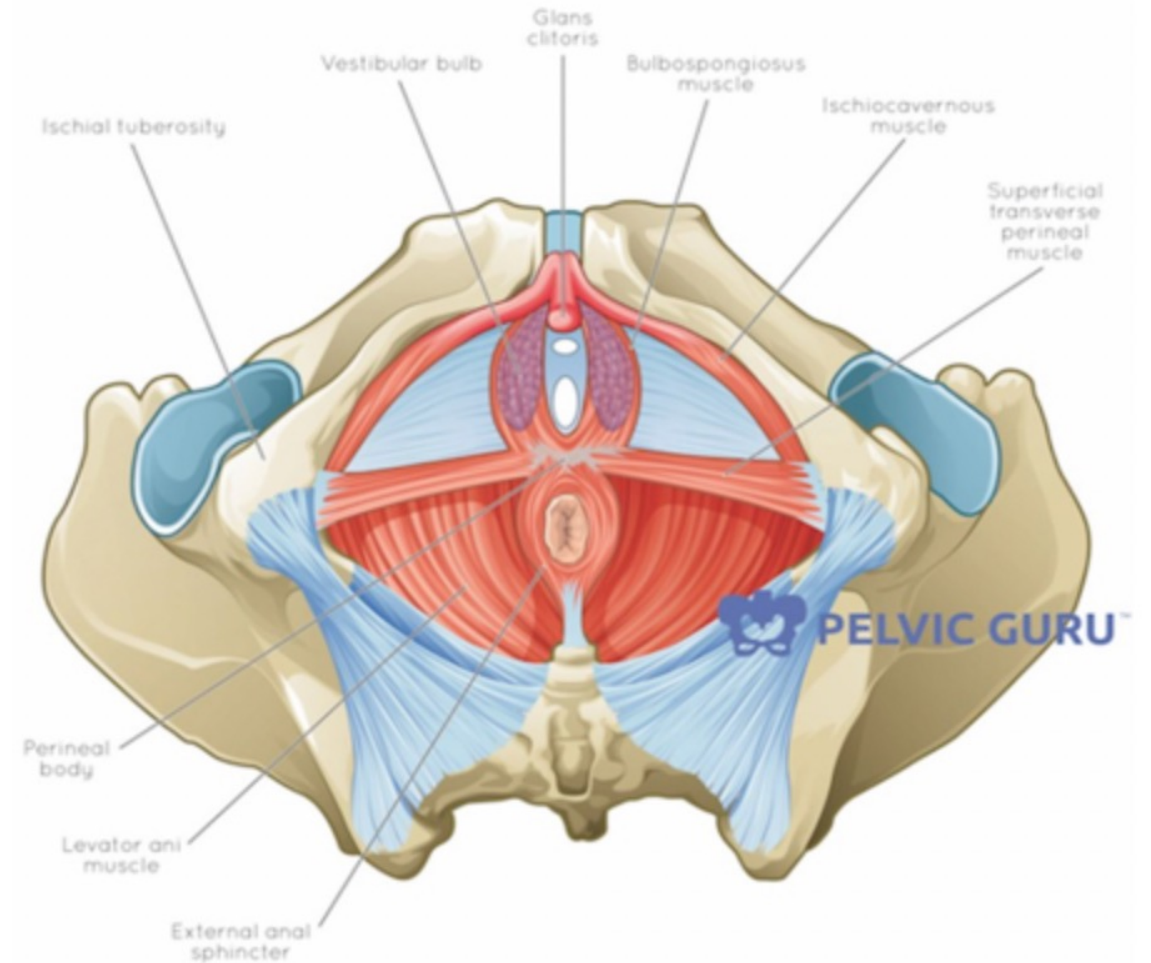
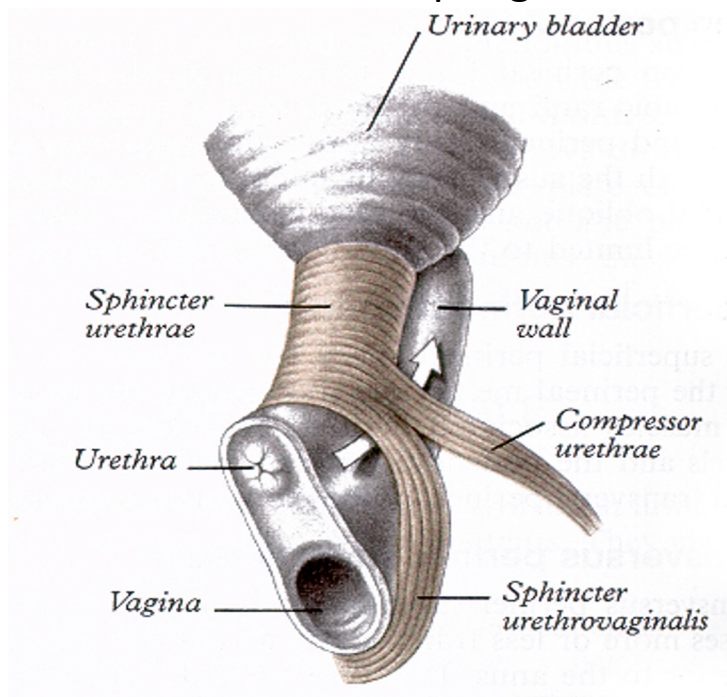
Diaphragma pelvis – m.levator ani

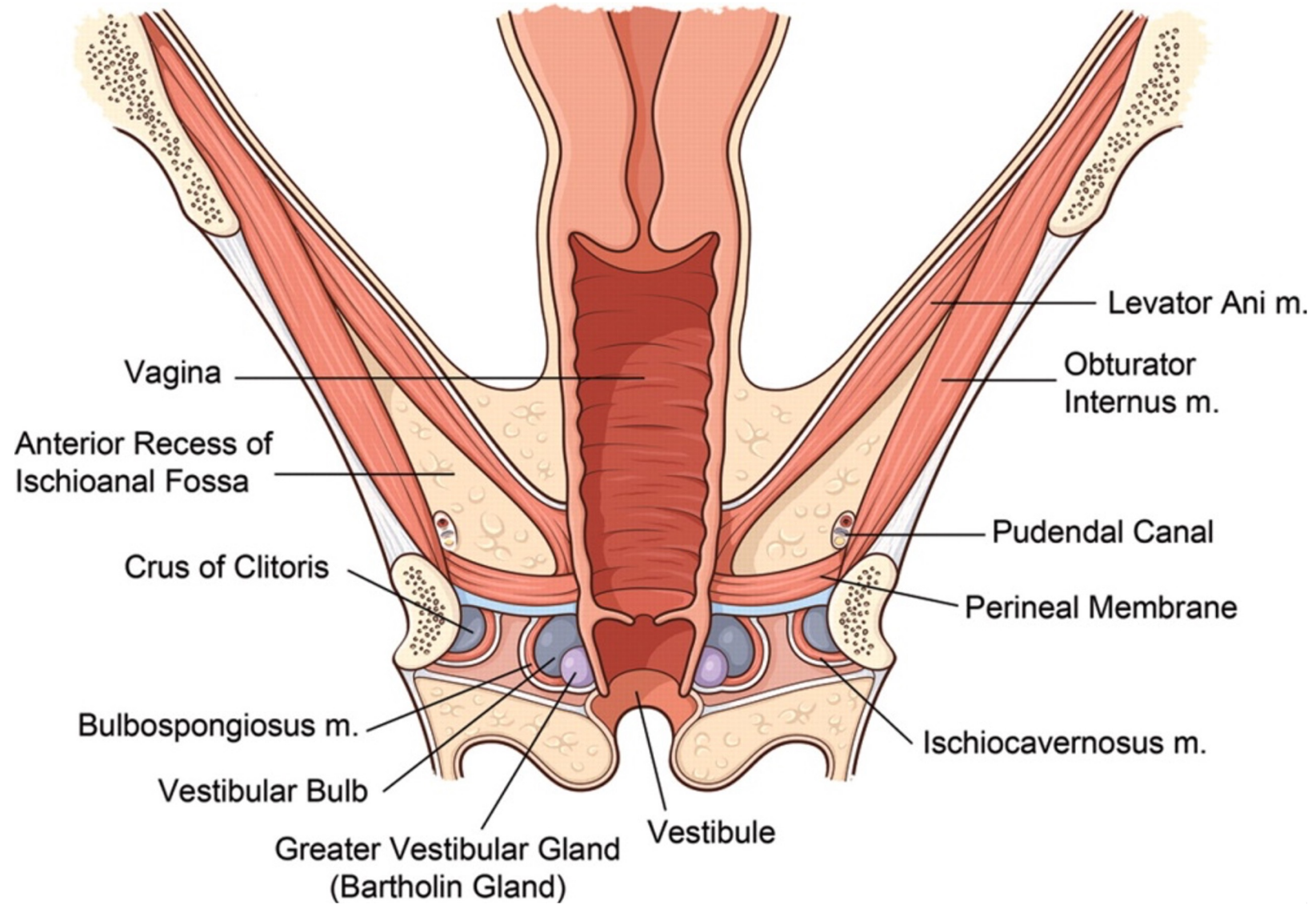
- M. puborectalis
- M. pubococcygeus – podpora orgánů procházející skrz hiatus levator ani
- M. iliococcygeus



Diaphragma urogenitale – perineální membrána

- Vazivově-svalová vrstva
- Udržení pozice uretry, uretrovezikální junkce a báze MM
- Mezi listy – m. sphincter urethrae, m. sphincter urethrovaginalis
- Na spodním listu – m. transversus perinei superf., m. ischiocavernosus, m. bulbospongiosus





Děkuji za pozornost