

An anatomical illustration of the human pelvis and lower spine, viewed from the front. The illustration shows the lumbar and sacral vertebrae at the top, with the sacrum in the center. The two halves of the pelvis are joined to each other and to the spine. The hip bones (ilium, ischium, and pubis) are clearly visible, along with the femoral heads. The text 'Anatomie pánve' is overlaid in the center, and 'Lenka Krobová' is written below it.

# Anatomie pánve

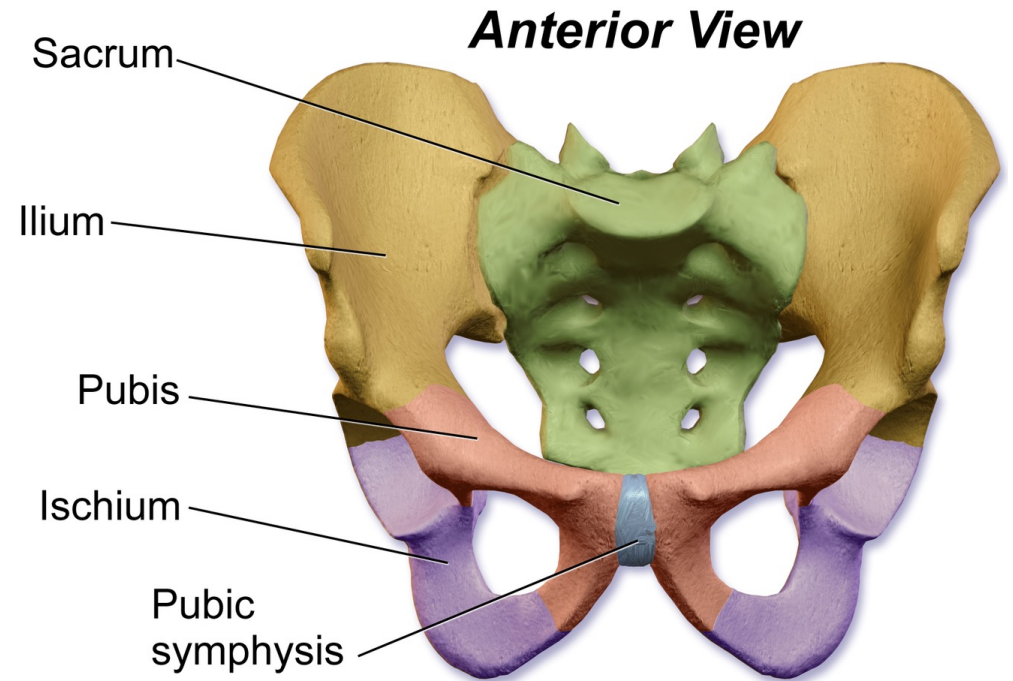
Lenka Krobová

# Pelvis

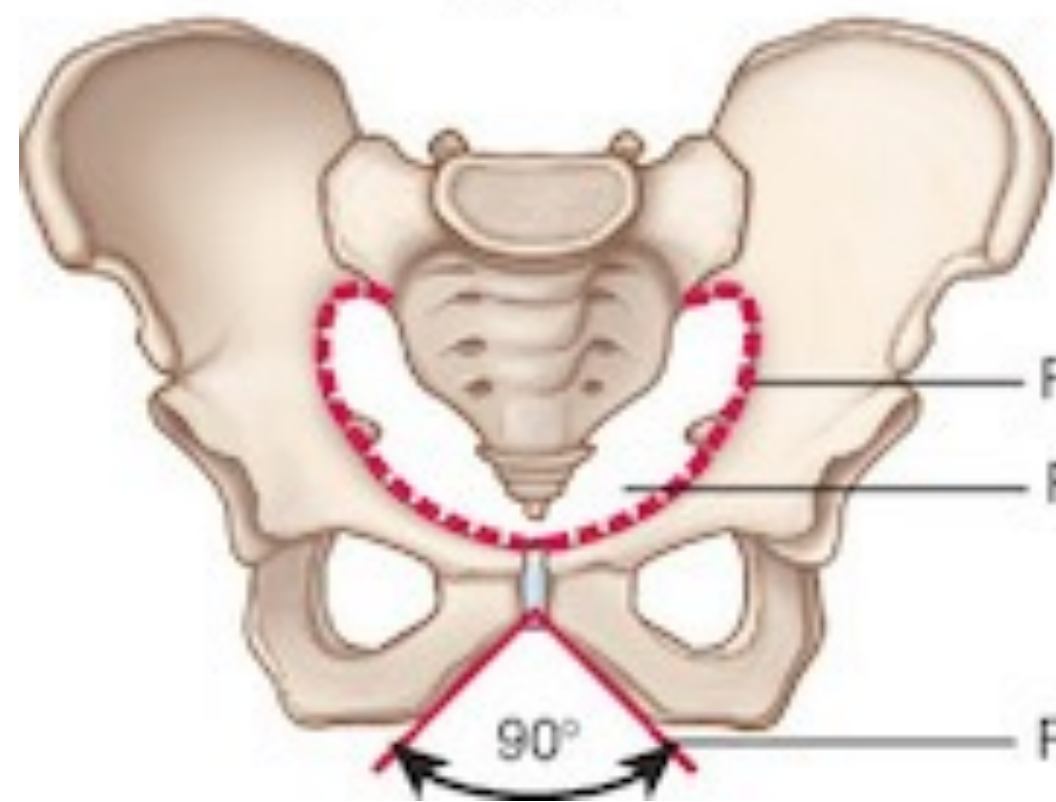
Dvě kosti pánevní + kost křížová

Pánevní kost:

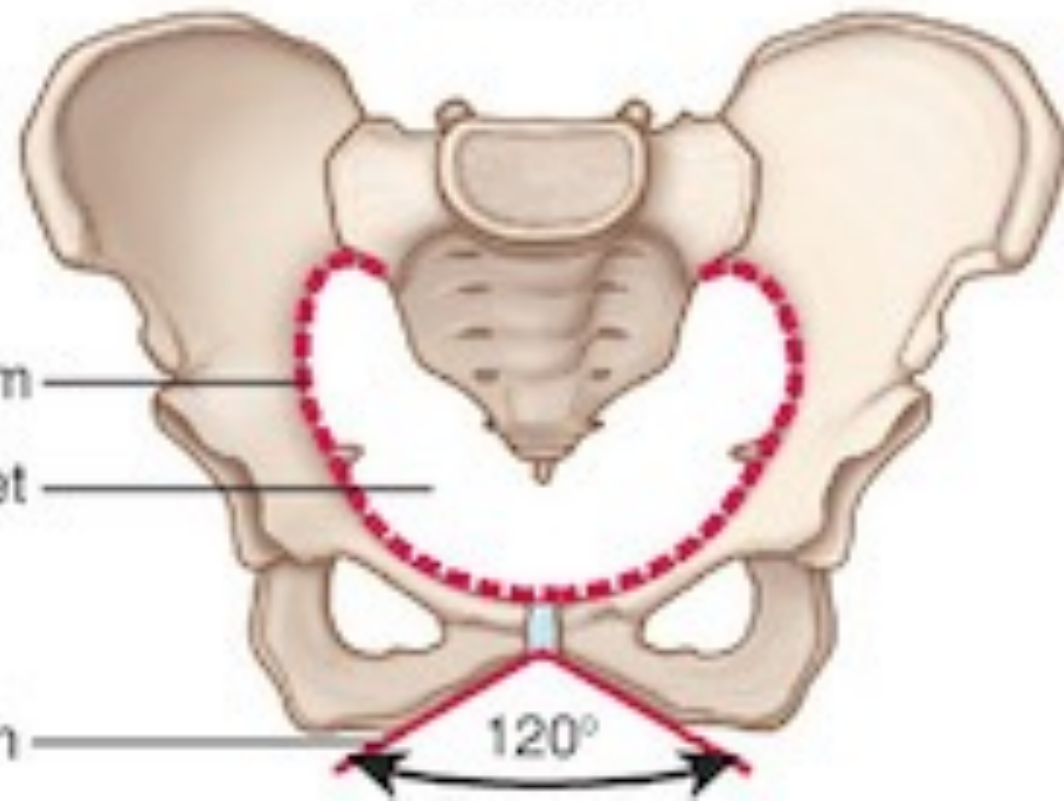
- Os ilium
- Os pubis
- Os ischium



**Male**



**Female**



Pelvic brim

Pelvic inlet

Pubic arch

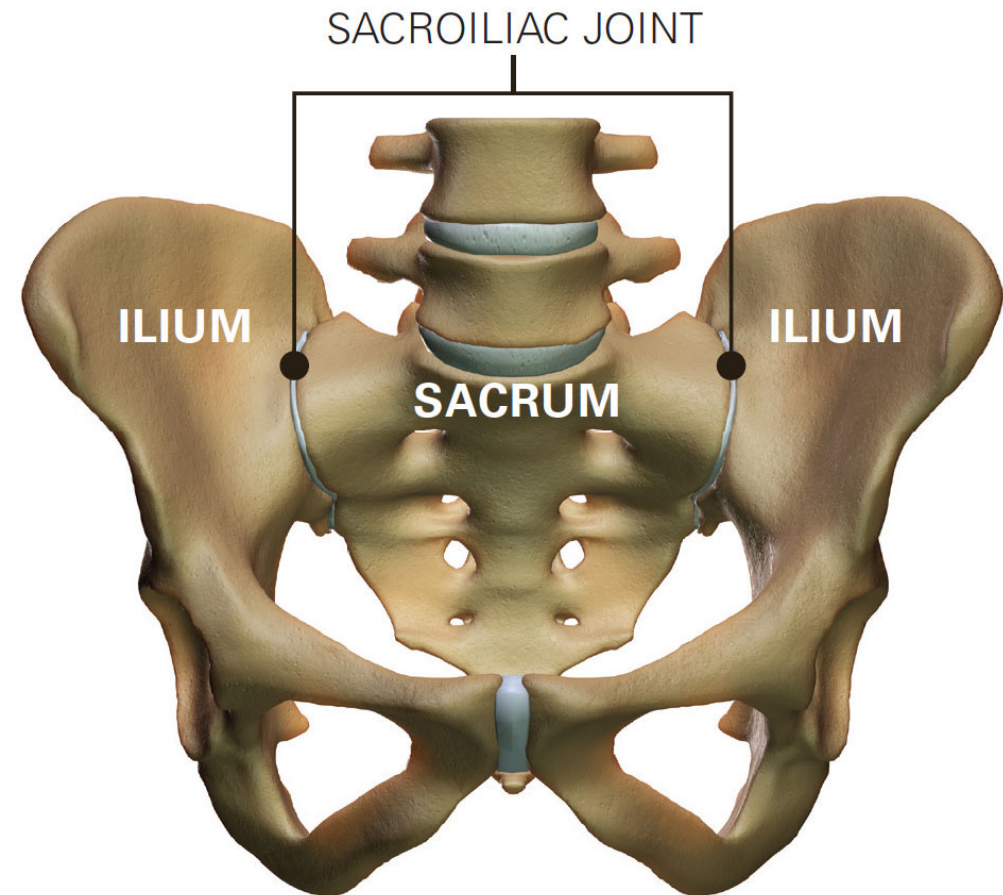
$90^\circ$

$120^\circ$

# Klouby pánve

Sakroiliální kloub

Symphysis pubica



# Členění pánve

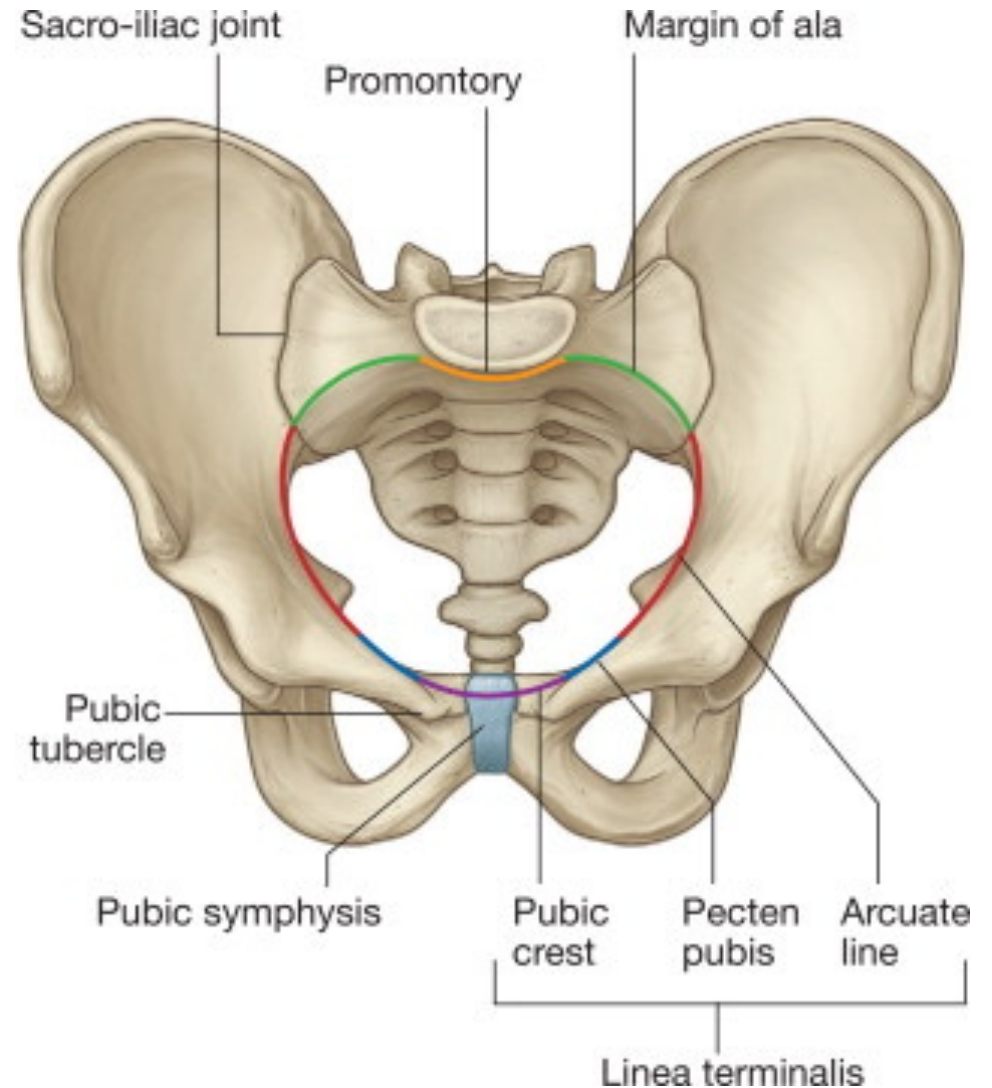
## Pelvis major

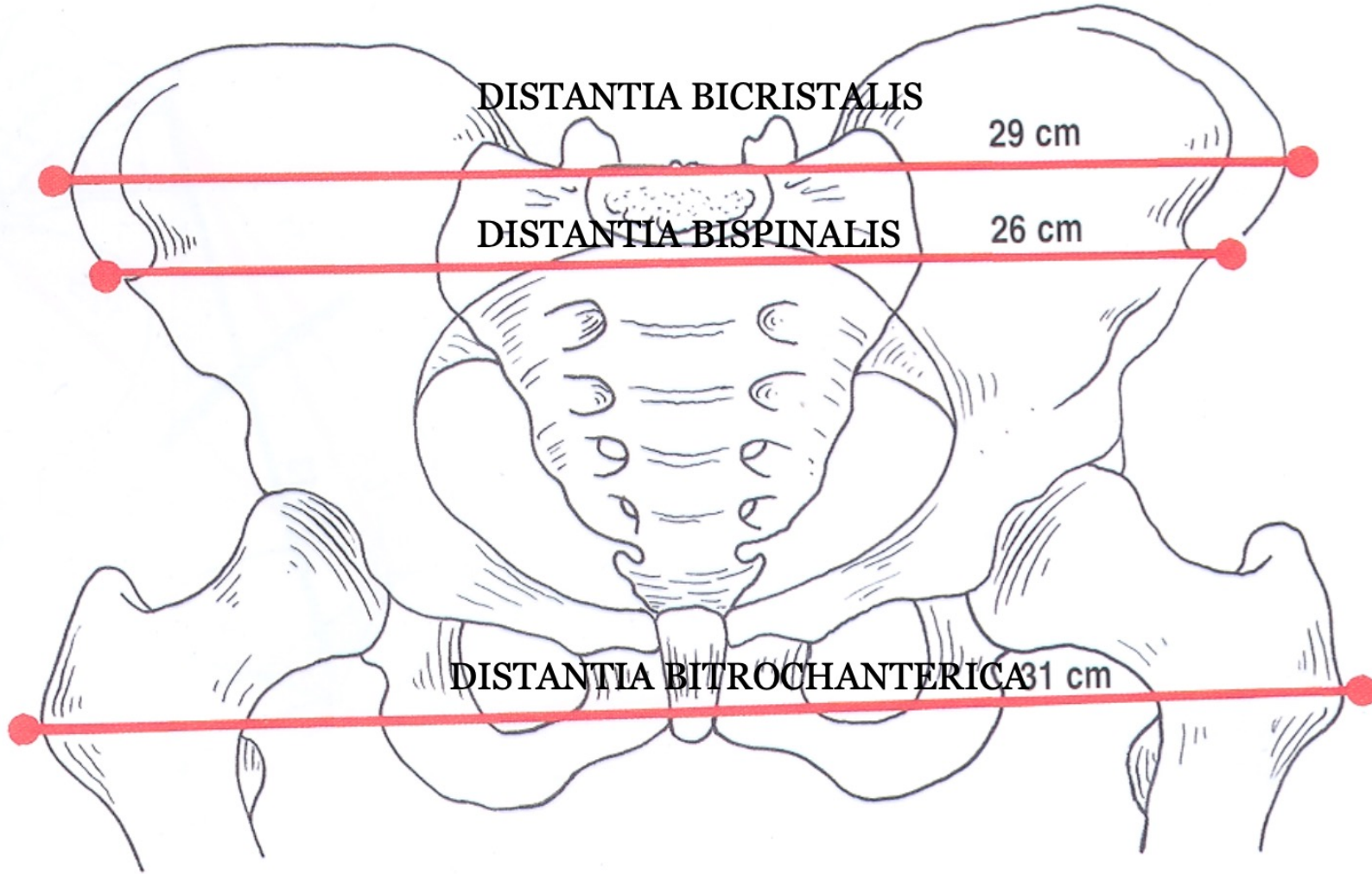
- Spodina dutiny břišní

## Linea terminalis

## Pelvis minor

- Pánevní dutina





DISTANTIA BICRISTALIS

29 cm

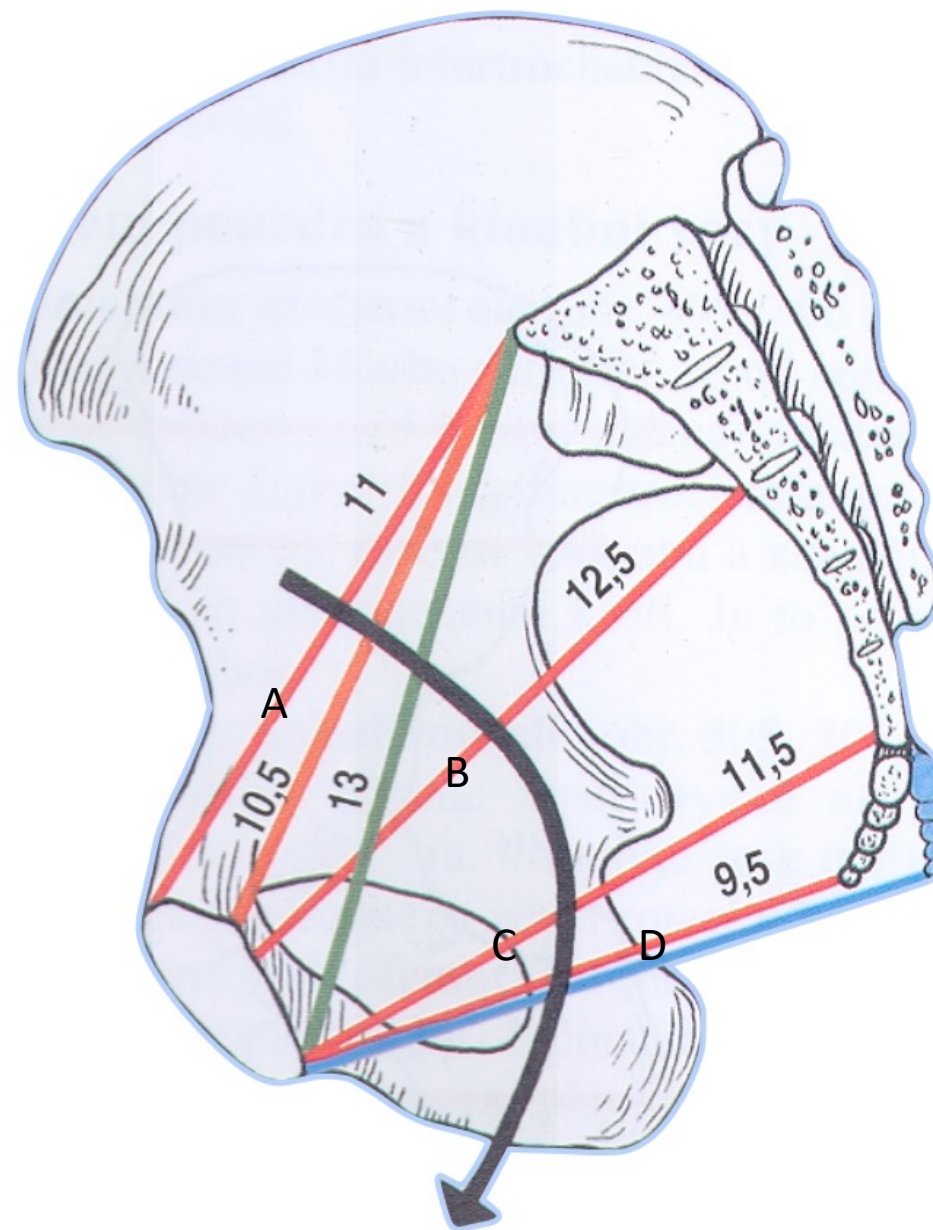
DISTANTIA BISPINALIS

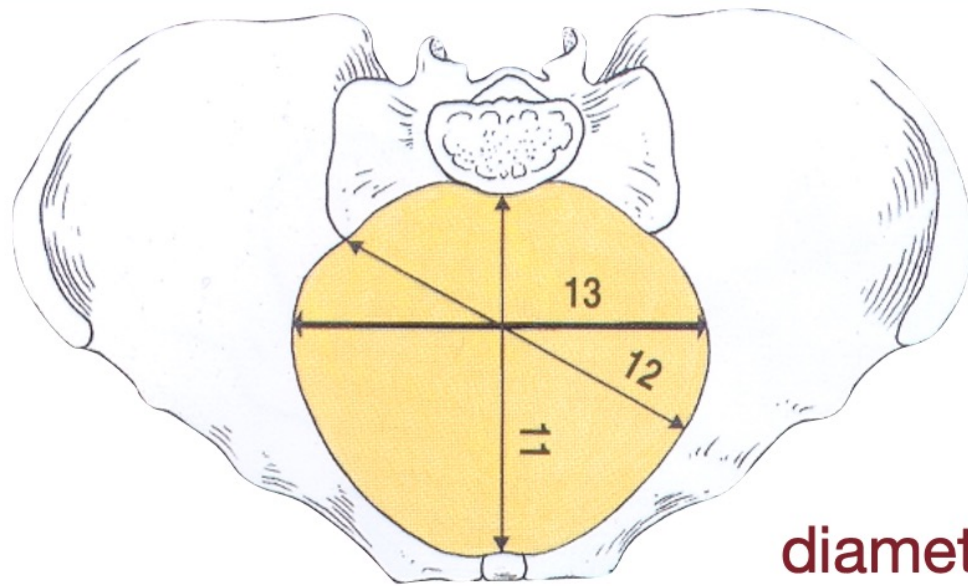
26 cm

DISTANTIA BITROCHANTERICA 31 cm

# Roviny pánevní

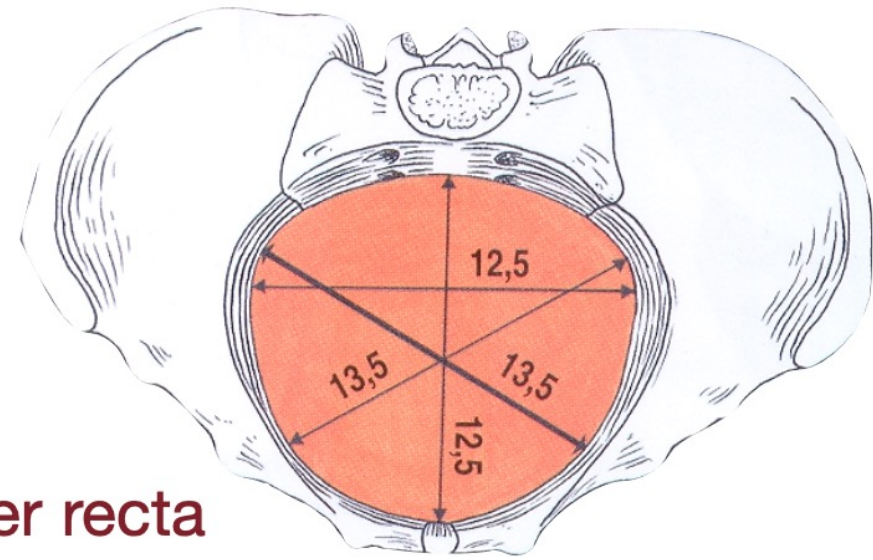
- A. Aditus (vchod)
- B. Amplitudo (šíře)
- C. Angustio (úžina)
- D. Exitus (východ)



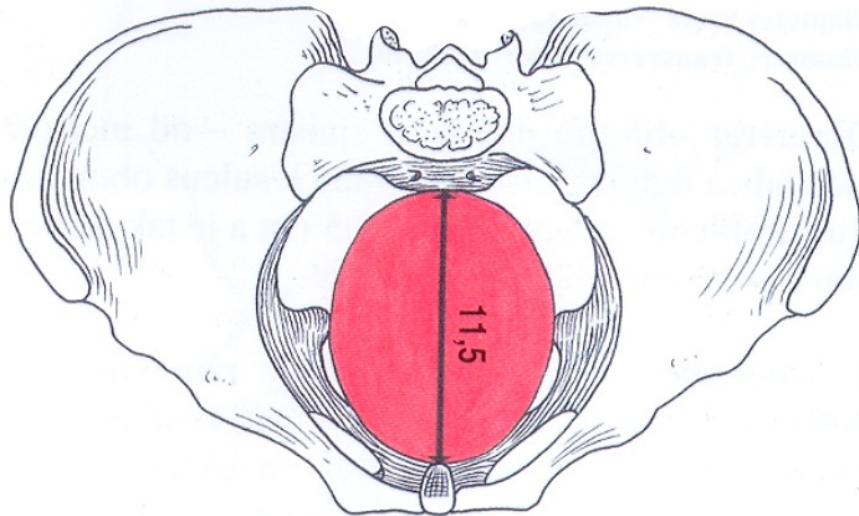


**ADITUS - VCHOD**

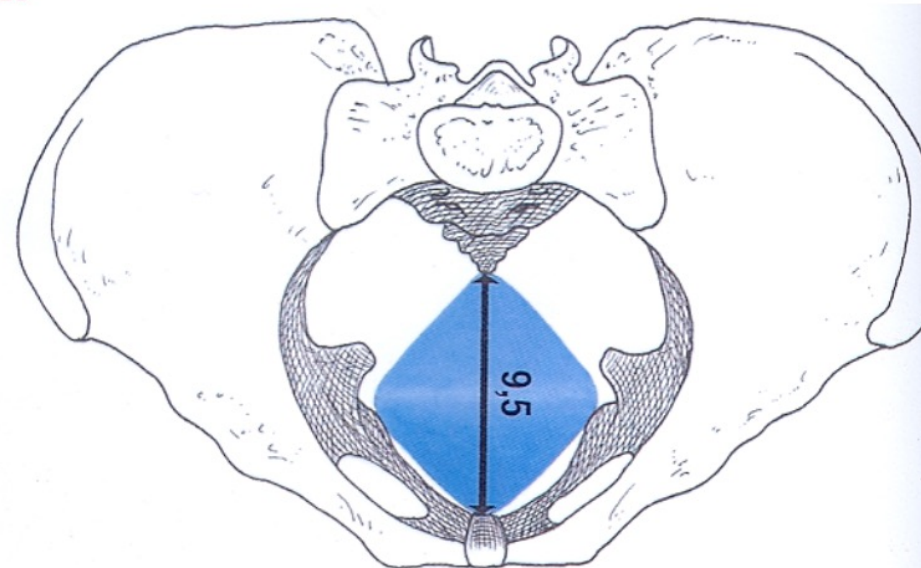
diameter recta  
transversa  
obliqua



**AMPLITUDO - ŠÍŘE**

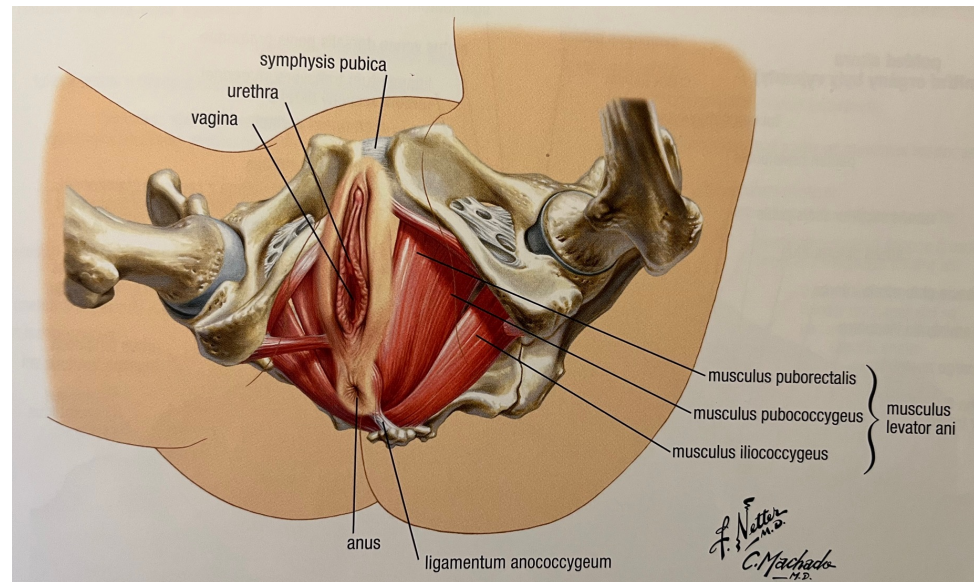


**ANGUSTIA - ÚŽINA**



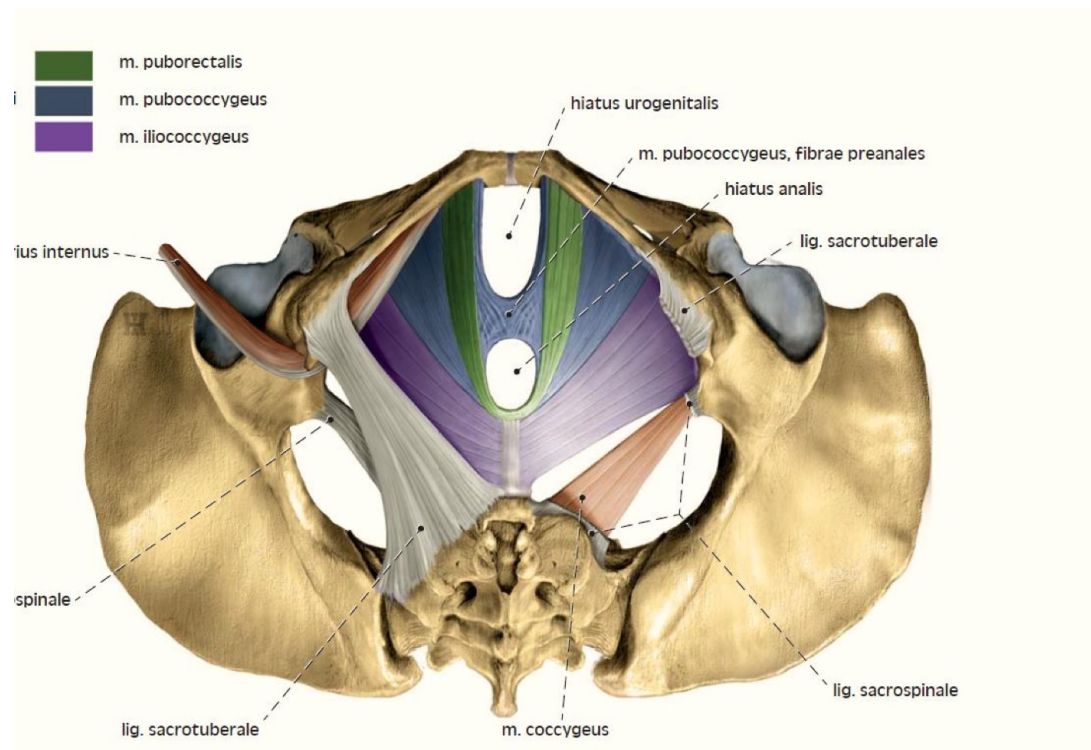
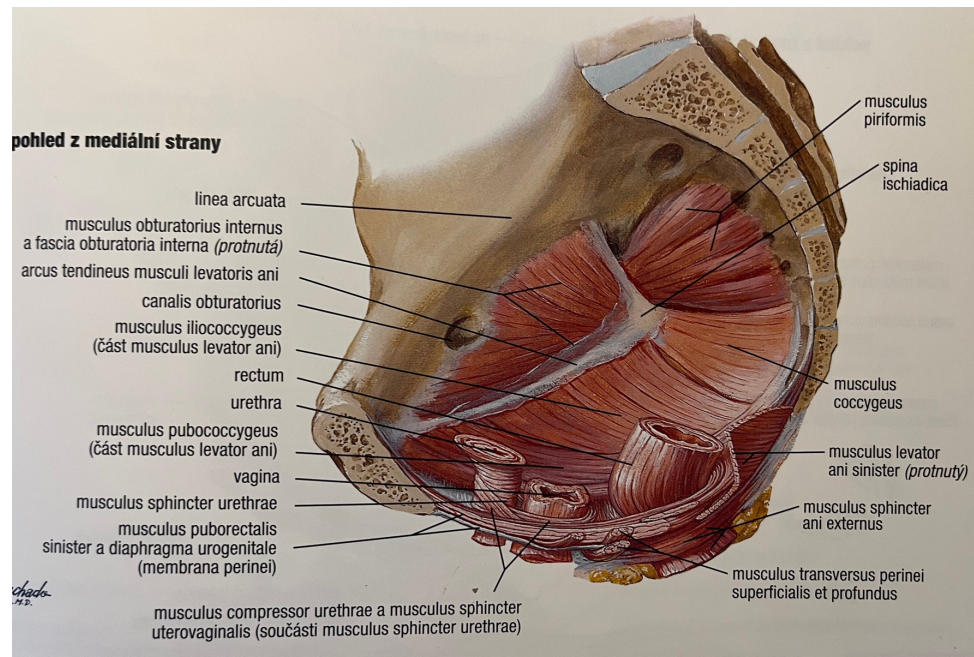
**EXITUS - VÝCHOD**





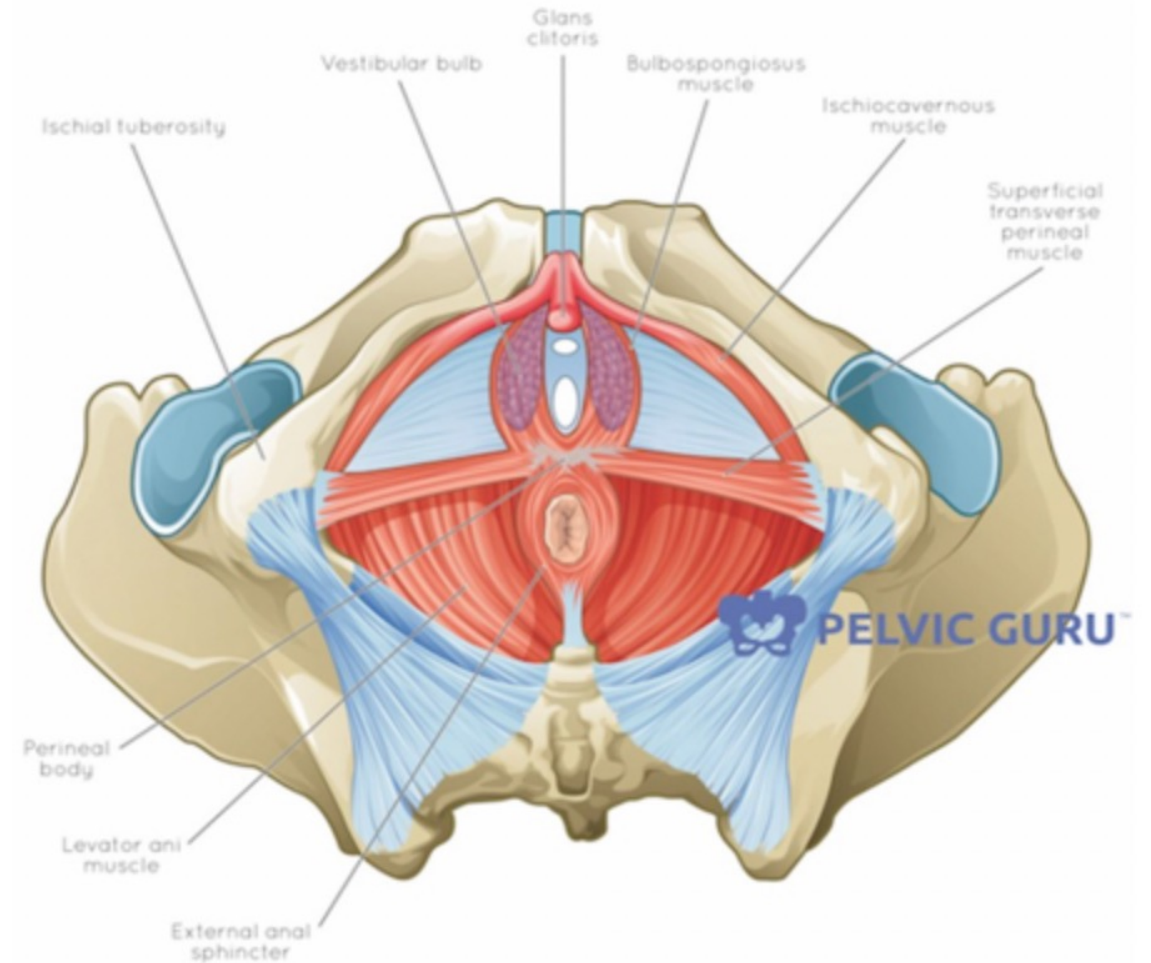
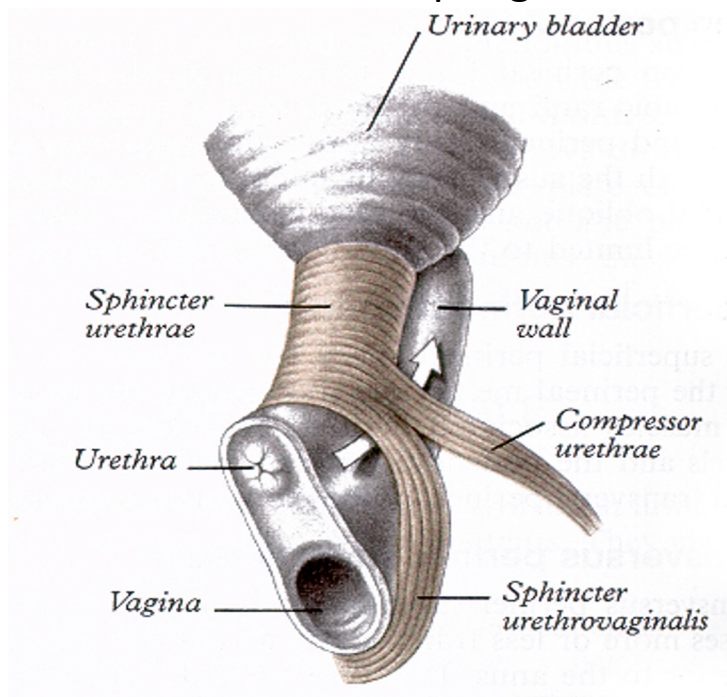
## Diaphragma pelvis – m.levator ani

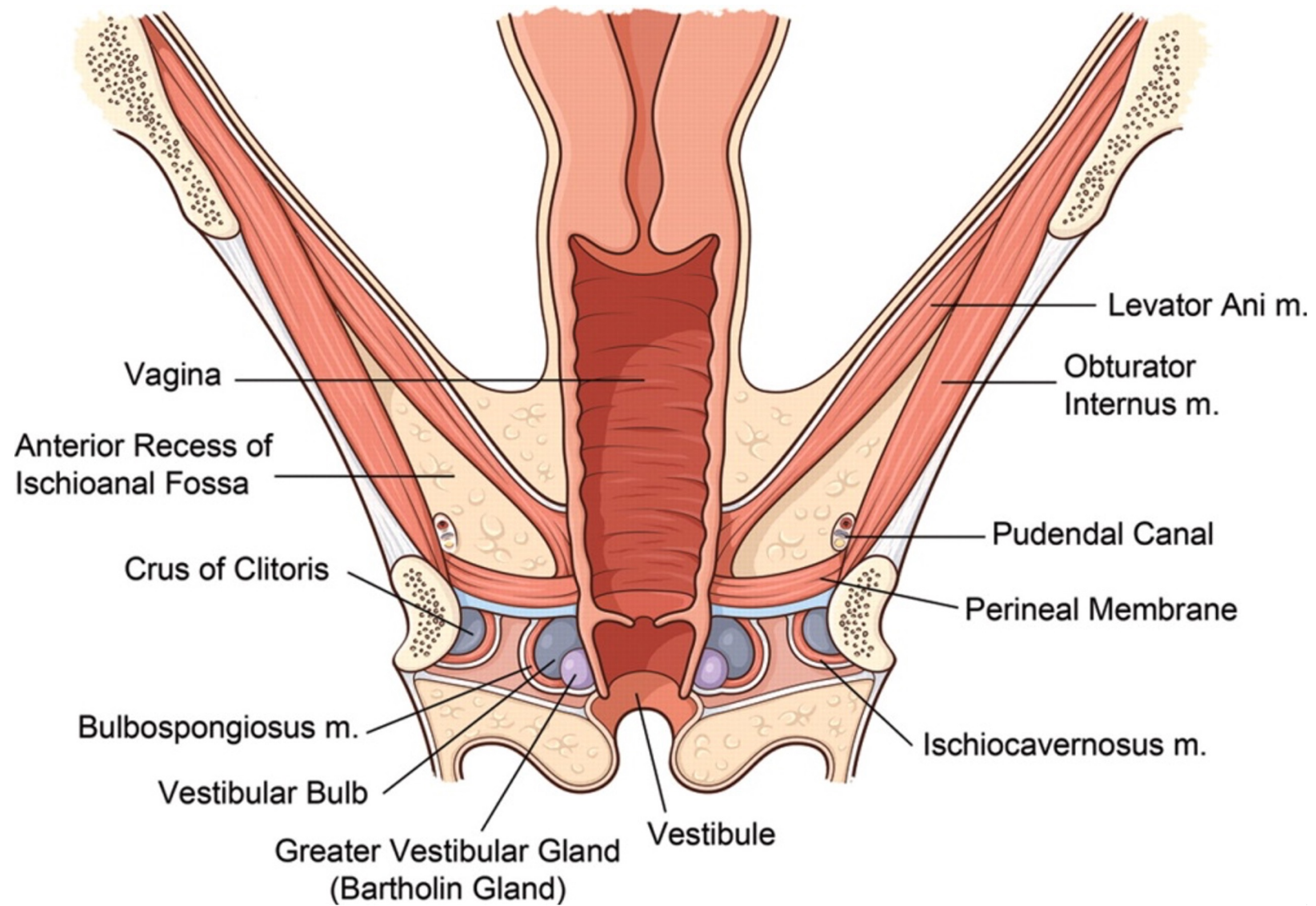
- M. puborectalis
- M. pubococcygeus – podpora orgánů procházející skrz hiatus levator ani
- M. iliococcygeus



# Diaphragma urogenitale – perineální membrána

- Vazivově-svalová vrstva
- Udržení pozice uretry, uretrovezikální junkce a báze MM
- Mezi listy – m. sphincter urethrae, m. sphincter urethrovaginalis
- Na spodním listu – m. transversus perinei superf., m. ischiocavernosus, m. bulbospongiosus





Děkuji za pozornost