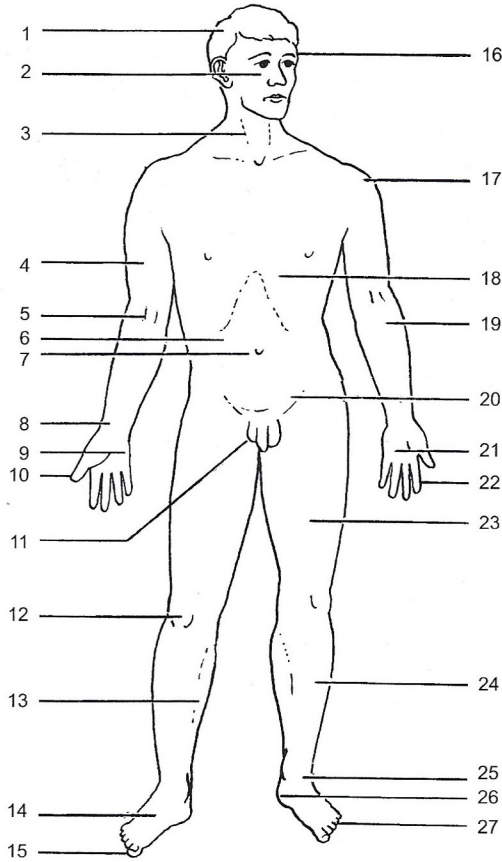


- knee [ni:] koleno  
limb [lim] úd, končetina  
lip [lip] ret, pysk  
liver [livə] játra  
lower [ləuə] dolní  
lung [laŋ] plíce (sg.)  
mouth [mauθ] ústa  
movement [mu:vmənt] pohyb  
neck [nek] krk (anat.), krček (stom.), hrdlo (gyn.), šije (ort.)  
nipple [nɪpl] bradavka  
osseous [osiəs] kostní, kostěný  
palm [pa:m] dlaň  
pelvic [pelvik] pánevní  
point [point] bod, tečka  
rib [rib] žebro  
seat [si:t] sídlo, ohnisko, ložisko  
shin [šin] holeň  
shoulder [ʃəuldə] rameno  
sight [sait] zrak  
smell [smel] čich; vonět  
sole [səul] chodidlo, plocha nohy  
spinal cord [spainl ko:d] mícha  
spleen [spli:n] slezina  
taste [teist] chuť; ochutnat  
thigh [θai] stehno  
thumb [θam] palec u ruky  
thyroid [θairoid] štítný; štítná žláza  
toe [təu] prst u nohy  
tongue [taŋ] jazyk  
tooth [tu:θ] (pl. teeth [ti:θ]) zub  
touch [tač] dotyk; dotýkat se  
trunk [traŋk] trup; kmen (nervový, cévní)  
upper [apə] horní  
urinary [juərinəri] bladder močový měchýř  
vessel [vesl] céva  
voluntary [voləntəri] volní, vůlí ovladatelný  
whole [həul] celý  
as a w. – jako celek  
wrist [rist] zápěstí

2. Give short answers.  
(e.g. "Yes, they are", "No, it isn't"):
- Are the lungs situated inside the chest?
  - Does the spinal cord run through the vertebral column?
  - Is the wrist part of the foot?
  - Does each hand have four fingers?
  - Are bones made up of hard osseous tissue?
  - Does the cardiac muscle contract regularly?
  - Do we find the liver and gallbladder inside the thoracic cavity?

3. Supply appropriate words to label the diagrams:



EXERCISES

1. Answer the following questions (use your dictionary if necessary):
- What are the main parts of the human body?
  - What does the neck contain?
  - Which organs do we find in the abdominal cavity?
  - How many bones are there in the skeleton of an adult human?
  - What is the difference between voluntary and involuntary muscles?
  - Which important organs can be found inside the thorax?
  - To what part of the human body does the thumb belong?

A

1	10	19
2	11	20
3	12	21
4	13	22
5	14	23
6	15	24
7	16	25
8	17	26
9	18	27